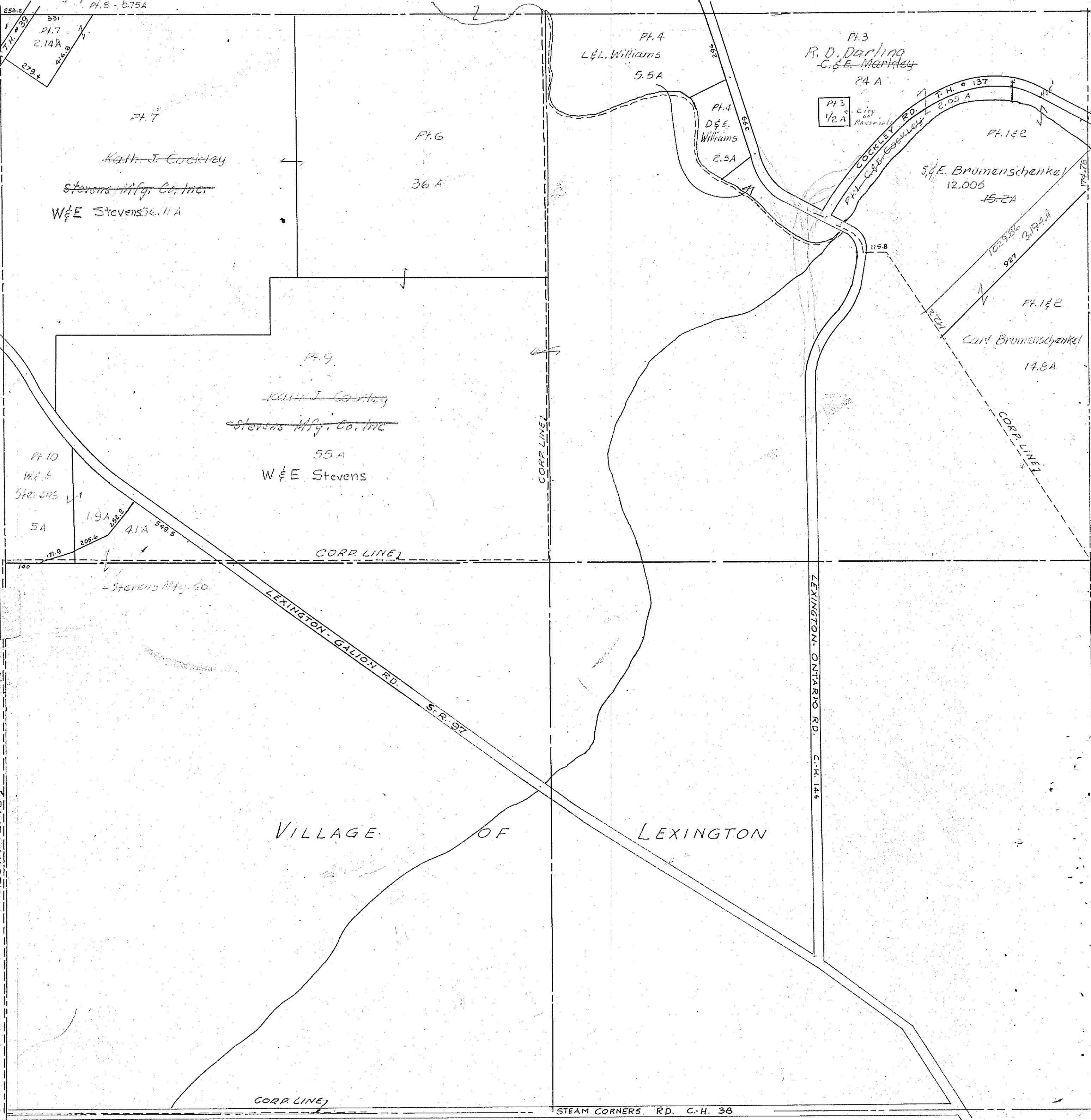


City of Mansfield
Pt. 8 - 0.75A



Pt. 7
KATH. J. Cockley
Stevens Mfg. Co., Inc.
W&E Stevens 56.11 A

Pt. 6
36 A

Pt. 9
KATH. J. Cockley
Stevens Mfg. Co., Inc.
55 A
W&E Stevens

Pt. 10
W&E Stevens
5 A
1.9 A
205.6
4.1 A
549.5
171.9

Pt. 4
L.E.L. Williams
5.5 A

Pt. 4
D.E.E. Williams
2.5 A

Pt. 3
R. D. Darling
C. E. Markley
24 A

Pt. 3
1/2 A
CITY OF MANSFIELD

Pt. 1&2
S.E. Brumenschanke
12.006
15.2 A

Pt. 1&2
Carl Brumenschanke
14.8 A

VILLAGE OF LEXINGTON

LEXINGTON S.D.

TROY TWP SEC. 14
Twp. 20, Rg. 19

STEAM CORNERS RD. C.H. 38

LEXINGTON-ONTARIO RD. C.H. 144

LEXINGTON-GALION RD. S.R. 97

COCKLEY RD. T.H. # 137
2.05 A

1029.86
921
3.19 A

115.8

772.2

774.7

774.7

213.5
253.2
279.4

Pt. 7
2.14 A
216.9

180

CORP. LINE 2

CORP. LINE 1

CORP. LINE 1

CORP. LINE 1

CORP. LINE 2