

26 R

A.B.B. Ritscher
290
100A
0.53A

Pt. 3

J. Parnet

~~45.45A~~
44.92

W. Palmer, et al.

Pt. 2

M. & L. Gerick

84.8A

#1

D. Wittmer

188A

1907

1905

#4

City of Mansfield

31A

938.63

Pt. 3

21.55A

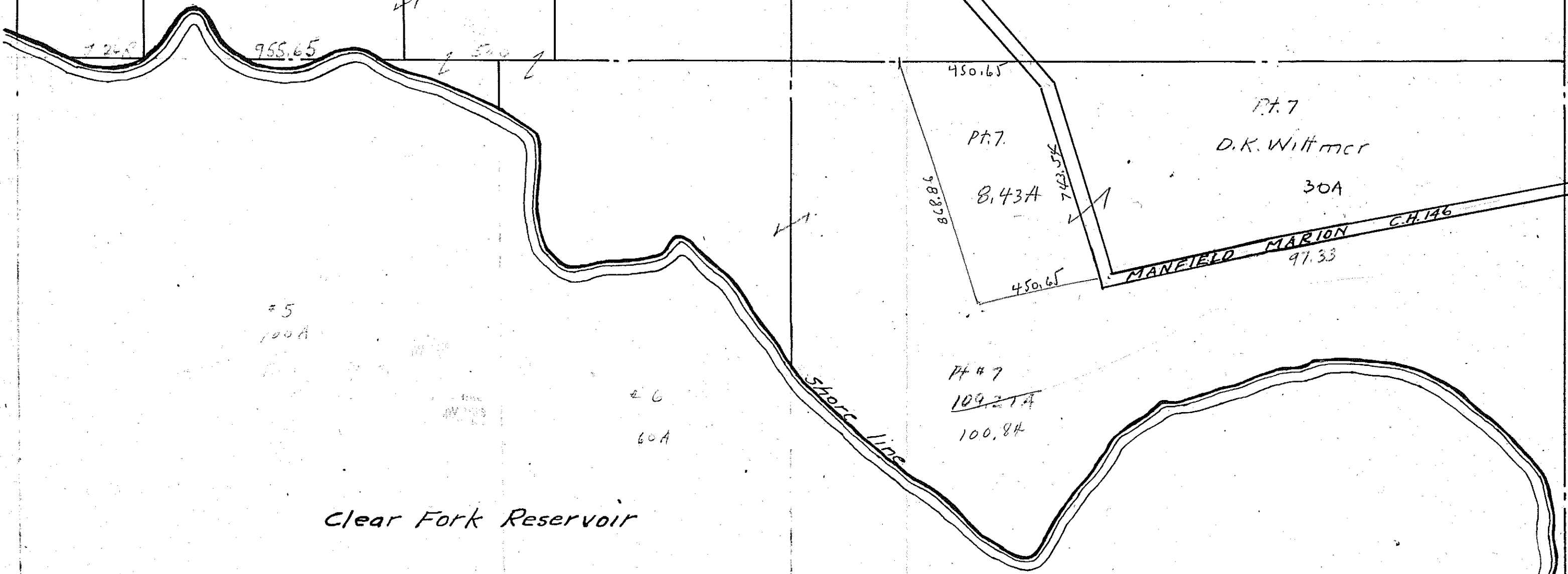
Pt. 2

9.2A

500

250

CH. 146
CH. 146
CH. 146
CH. 146
CH. 146



Clear Fork Reservoir

#5
100A

#6
60A

450.65

Pt. 7

8.43A

988.78

450.65

Pt. 7

D.K. Wittmer

30A

MANFIELD MARION C.H. 146
97.33

Pt. 7
~~109.21A~~
100.84

Lexington S.D.

#8

20A

TROY TWP
SEC. 4