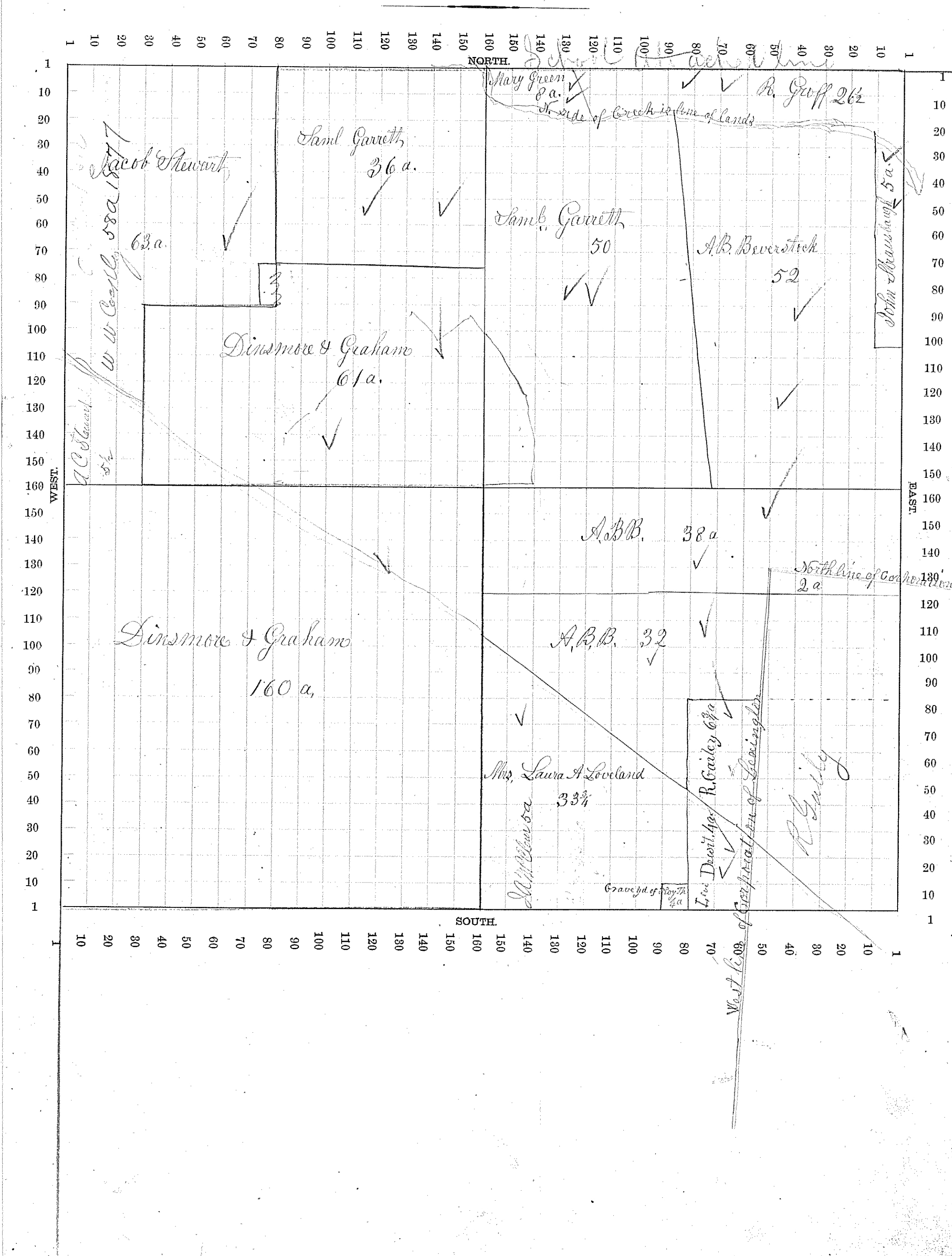


Section, No. 14.

Scale, 32 Rods to an Inch, or 10 Rods to a Space.



WEST. 1 10 20 30 40 50 60 70 80 90 100 110 120 130 140 150 160 150 140 130 120 110 100 90 80 70 60 50 40 30 20 10 1

NORTH. 1 10 20 30 40 50 60 70 80 90 100 110 120 130 140 150 160 150 140 130 120 110 100 90 80 70 60 50 40 30 20 10 1

SOUTH. 1 10 20 30 40 50 60 70 80 90 100 110 120 130 140 150 160 150 140 130 120 110 100 90 80 70 60 50 40 30 20 10 1

EAST. 1 10 20 30 40 50 60 70 80 90 100 110 120 130 140 150 160 150 140 130 120 110 100 90 80 70 60 50 40 30 20 10 1

Jacob Stewart 63 a. ✓
Saml. Garrett, 36 a. ✓
Saml. Garrett 50 ✓
A.B. Beverstock 52 ✓
Dinsmore & Graham 61 a. ✓
A.B.B. 38 a. ✓
Dinsmore & Graham 160 a. ✓
A.B.B. 32 ✓
Mrs. Laura A. Loveland 33 3/4 ✓
R. G. G. G. 6 3/4 ✓
R. G. G. G. ✓
John Braunsdorf 5 a. ✓
Mary Green 2 a. ✓
R. G. G. 2 1/2 ✓
North line of Corporation of Lexington ✓
Grave of Mrs. Th. G. G. G. ✓
Line Division of R. G. G. G. ✓
West line of Corporation of Lexington ✓
N. side of Creek is line of lands ✓
A.C. Stewart 5 1/2 ✓
W. W. Cooley 58 a. 1/2 ✓