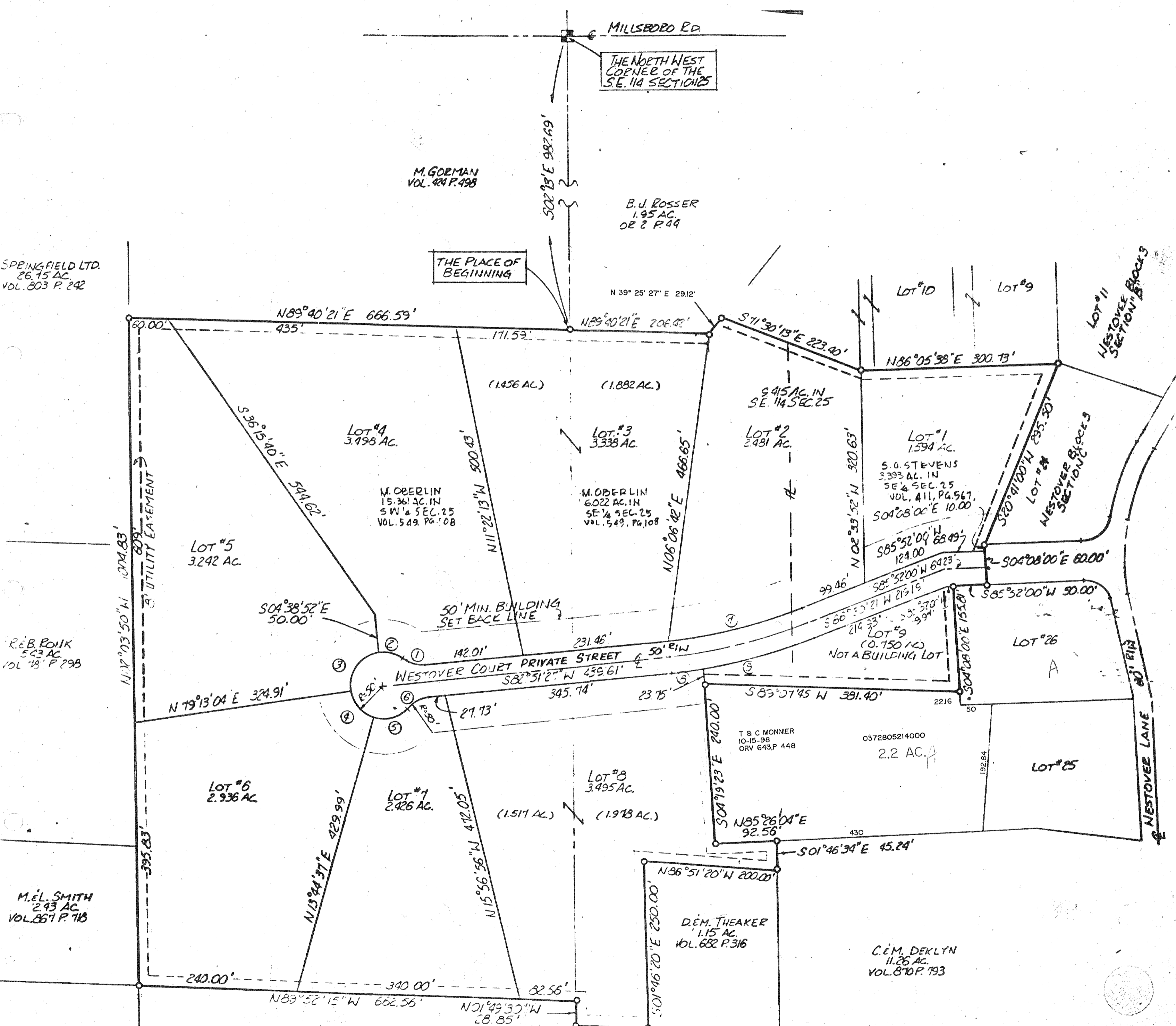


WESTOVER LANE ASSOCIATION NO. 2

AN ESTATE SUBDIVISION
PT. S.E. 1/4 & PT. S.W. 1/4 SECTION 25
SPRINGFIELD TOWNSHIP, T-21, R-19
RICHLAND COUNTY, OHIO



SPRINGFIELD LTD.
26.75 AC.
VOL. 503 P. 242

R.E.B. FONK
5.03 AC.
VOL. 78 P. 298

M.E.L. SMITH
2.93 AC.
VOL. 867 P. 718

M. GORMAN
VOL. 424 P. 498

B. J. ROSSER
1.95 AC.
OR 2 P. 44

THE PLACE OF
BEGINNING

THE NORTH WEST
CORNER OF THE
S.E. 1/4 SECTION 25

M. OBERLIN
15.361 AC. IN
S.W. 1/4 SEC. 25
VOL. 549 P. 108

M. OBERLIN
6.022 AC. IN
S.E. 1/4 SEC. 25
VOL. 549 P. 108

S. G. STEVENS
3.393 AC. IN
S.E. 1/4 SEC. 25
VOL. 411, P. 567,
504°08'00" E 10.00'

9.415 AC. IN
S.E. 1/4 SEC. 25

LOT #2
2.481 AC.

LOT #1
1.594 AC.

LOT #5
3.242 AC.

LOT #4
3.498 AC.

LOT #3
3.338 AC.

LOT #26
A

T. B. C. MONNIER
10-15-98
ORV 643, P. 448

0372805214000
2.2 AC. A

LOT #8
3.495 AC.

LOT #6
2.936 AC.

LOT #7
2.926 AC.

D.E.M. THEAKER
1.15 AC.
VOL. 682 P. 316

C.E.M. DEKLYN
11.26 AC.
VOL. 870 P. 193

RECORDED: VOL. 25, PG. 128

SPRINGFIELD TWP. 25-B