

Pt. 3
THE OHIO STATE
UNIVERSITY
V.562, P.211
102.68 AC.

THE OHIO STATE
UNIVERSITY
V.562, P.211
100 AC.

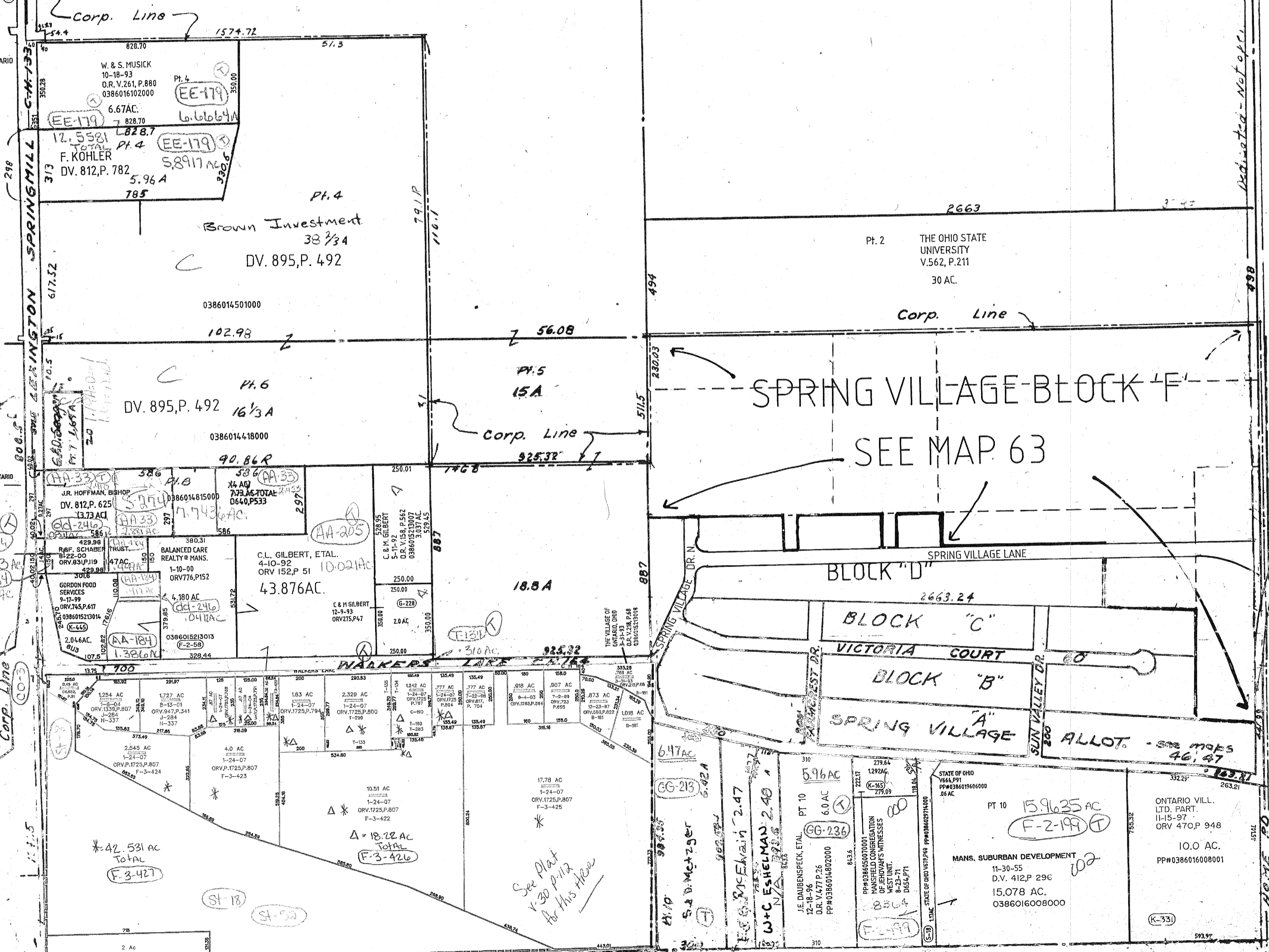
THE OHIO STATE
UNIVERSITY
V.562, P.211
30 AC.

CITY OF MANSFIELD

VILLAGE OF ONTARIO
3-22-71
D.V. 646, P. 489
33AC.

VILLAGE OF ONTARIO
D.V.

Indicated - Not off.



14783 AC
10304 AC

111.5
111.5

*42.531 AC
Total
F-3-421

ST-18
ST-53

A. R. & R. FRASHER
1-24-01
ORV. 871P. 280
0386015213004

Twp 21-R.17

1710 W. 1552, P. 148
38 38 38 EAK

SPRINGFIELD TWP. SEC. 12

STATE OF OHIO
1664, P. 91
PP#038601966000
06 AC
PT 10 15.9635 AC
F-2-199
MANS. SUBURBAN DEVELOPMENT
11-30-55
D.V. 412, P. 296
15.078 AC.
0386016008000

ONTARIO VILL.
LTD. PART.
11-15-97
ORV 47CP 948
10.0 AC.
PP#0386016008001

(K-33)