

M. LARIBEE  
6-5-92  
O.R. V.157 P.352  
0372804103002  
086 AC.(SEC. 7)

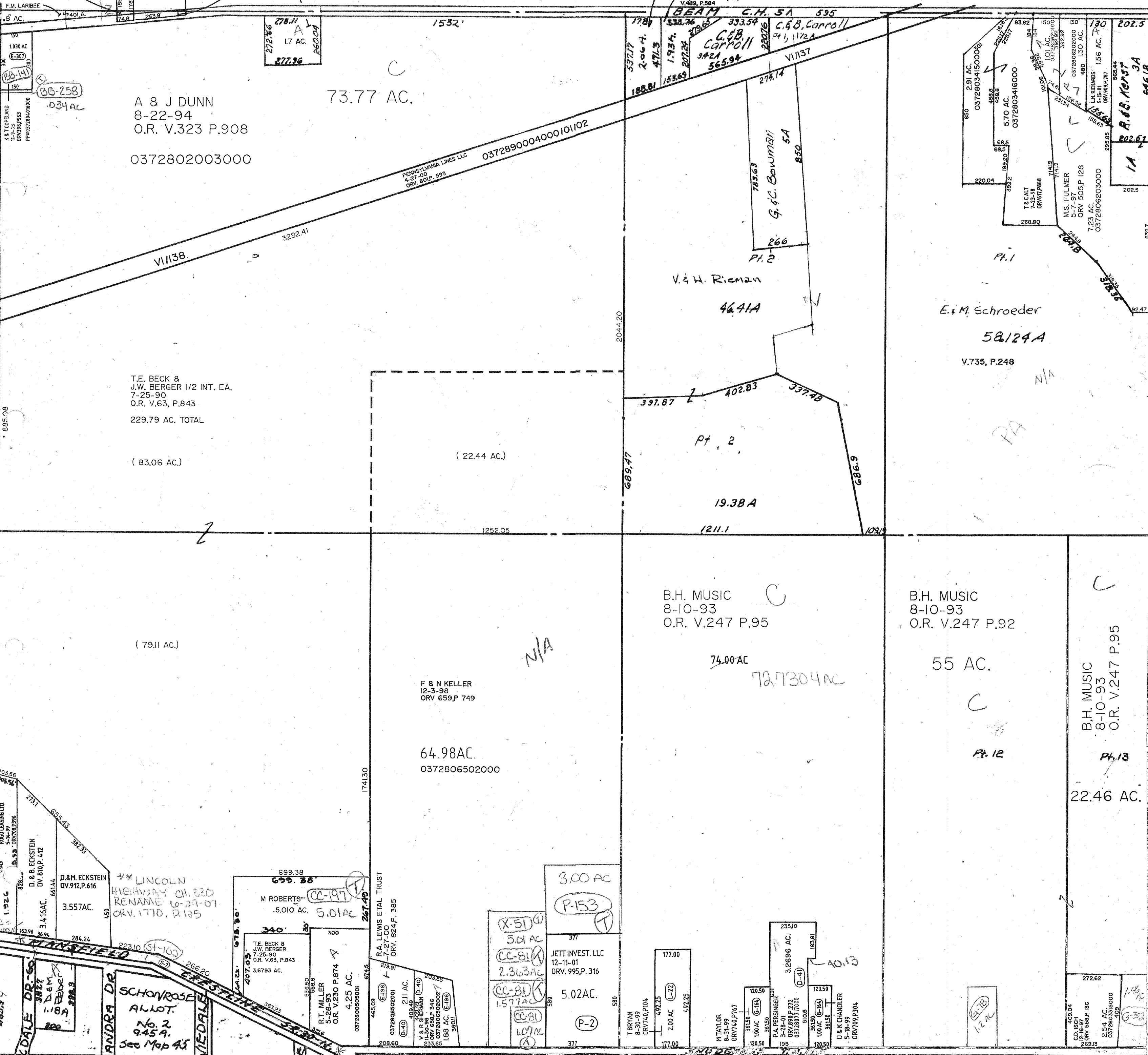
225 A. 316734.1  
74.6 262.8  
178.5 .798 A.  
174.8 263.8

N/A  
M. LARIBEE  
213 AC.(SEC. 7)  
0372804103001

F. & E. LAMP  
9-5-01  
O.R.V. 955.P. 657  
0372807617000

W. J. Shepherd  
V.861, P.580

J. & R. Boals  
V.489, P.584  
BEAM C.H. 5A 395  
333.54  
C. & B. Carroll  
Pt. 1, 1/2A



A & J DUNN  
8-22-94  
O.R. V.323 P.908  
0372802003000

T.E. BECK &  
J.W. BERGER 1/2 INT. EA.  
7-25-90  
O.R. V.63, P.843  
229.79 AC. TOTAL  
( 83.06 AC.)

( 22.44 AC.)

( 79.11 AC.)

F & N KELLER  
12-3-98  
O.R.V. 659.P. 749

64.98AC.  
0372806502000

B.H. MUSIC  
8-10-93  
O.R. V.247 P.95

74.00 AC  
72.7304AC

B.H. MUSIC  
8-10-93  
O.R. V.247 P.92

55 AC.

B.H. MUSIC  
8-10-93  
O.R. V.247 P.95  
22.46 AC.

SANDRA DR  
SCHONROSE  
ALLOT.  
NO. 2  
945A.  
See Map 95  
1643.93

M ROBERTS  
.5010 AC.  
5.01AC

T.E. BECK &  
J.W. BERGER  
7-25-90  
O.R. V.63, P.843  
3.6793 AC.

R.T. MILLER  
5-28-93  
O.R. V.230 P.874  
4.25 AC.

R.A. LEWIS ETAL TRUST  
7-27-00  
O.R.V. 824.P. 385

V & R SHEPHERD  
11-30-98 P. 34C  
0372806502002  
1.88 AC. (E188)  
36011

JETT INVEST. LLC  
12-11-01  
O.R.V. 995.P. 316  
5.02AC.

3.00 AC  
P-153

T BRYAN  
8-30-99  
O.R.V.740.P104  
2.00 AC (L-22)  
177.00

177.00

177.00

120.50

120.50

120.50

120.50

120.50

120.50

120.50

120.50

120.50

120.50

120.50

120.50