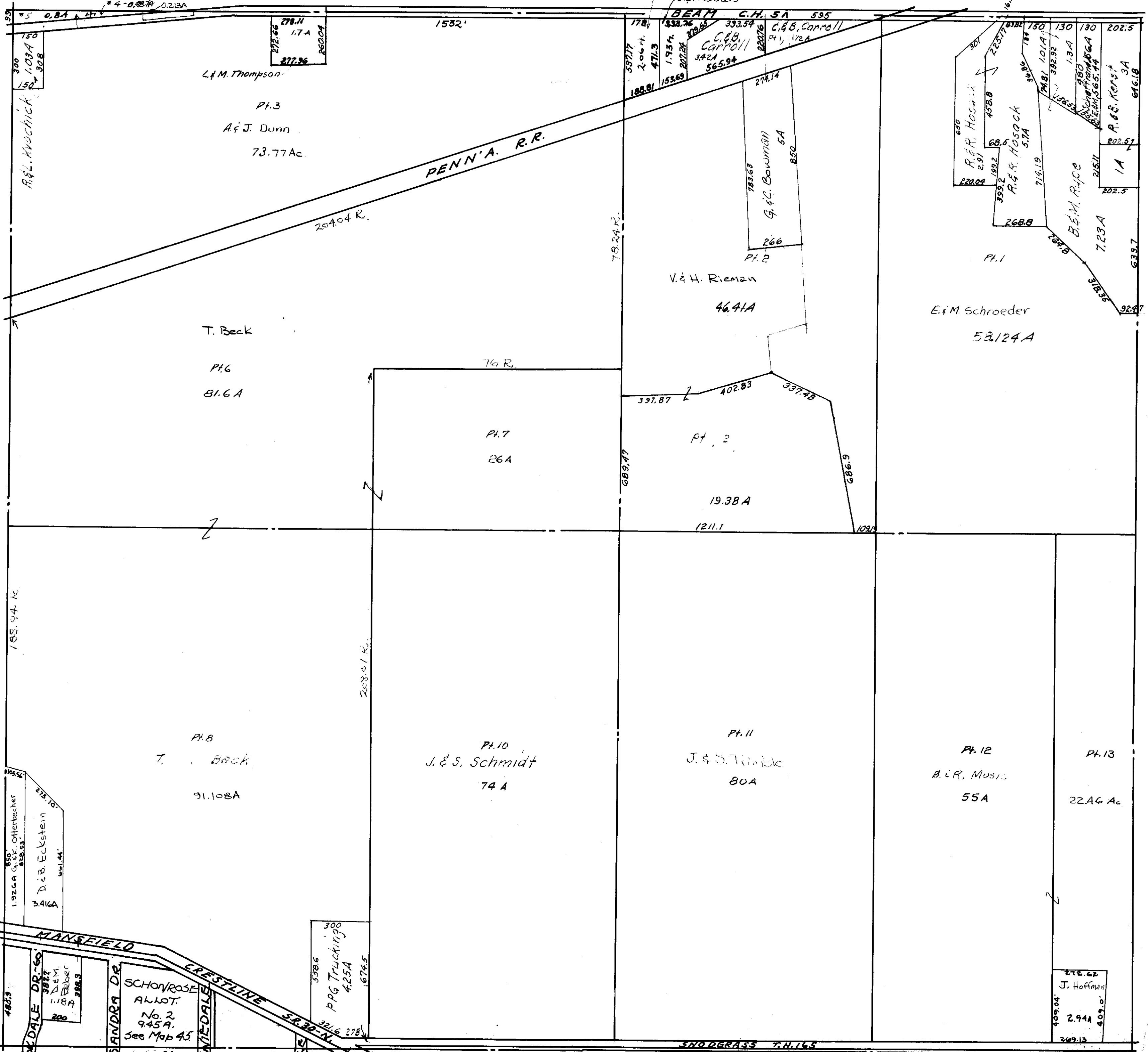


F. & P. Larabee

W. & J. Shepherd

M. Larabee

J. & P. Boals



278.11  
1.7A  
272.66  
277.96  
262.04

BEAM C.H. 5A 895  
333.36  
333.54  
C. & B. Carroll  
Pt. 1, 1/2A

L. & M. Thompson  
Pt. 3  
A. & J. Dunn  
73.77 Ac.

PENN'A. R.R.

G. C. Bowman  
Pt. 2  
266  
5A  
850

V. & H. Rieman  
46.41A

E. & M. Schroeder  
53.124A

T. Beck  
Pt. 6  
81.6A

Pt. 7  
26A

Pt. 2  
19.38A  
1211.1

Pt. 8  
T. Beck  
91.108A

Pt. 10  
J. & S. Schmidt  
74A

Pt. 11  
J. & S. Trimble  
80A

Pt. 12  
B. & R. Music  
55A

Pt. 13  
22.46 Ac.

1926A C. & P. Othertbecher  
328.33  
273.10  
D. & B. Eckstein  
3416A  
641.44

300  
538.6  
PPG Trucking  
4.25A  
1.674.5  
381.6  
278

SCHONROSE  
ALLOT.  
No. 2  
945A.  
See Map 45

272.62  
J. Hoffman  
2.94A  
409.0  
209.13

Twp. 21-R.19

SPRINGFIELD TWP. SEC. 7