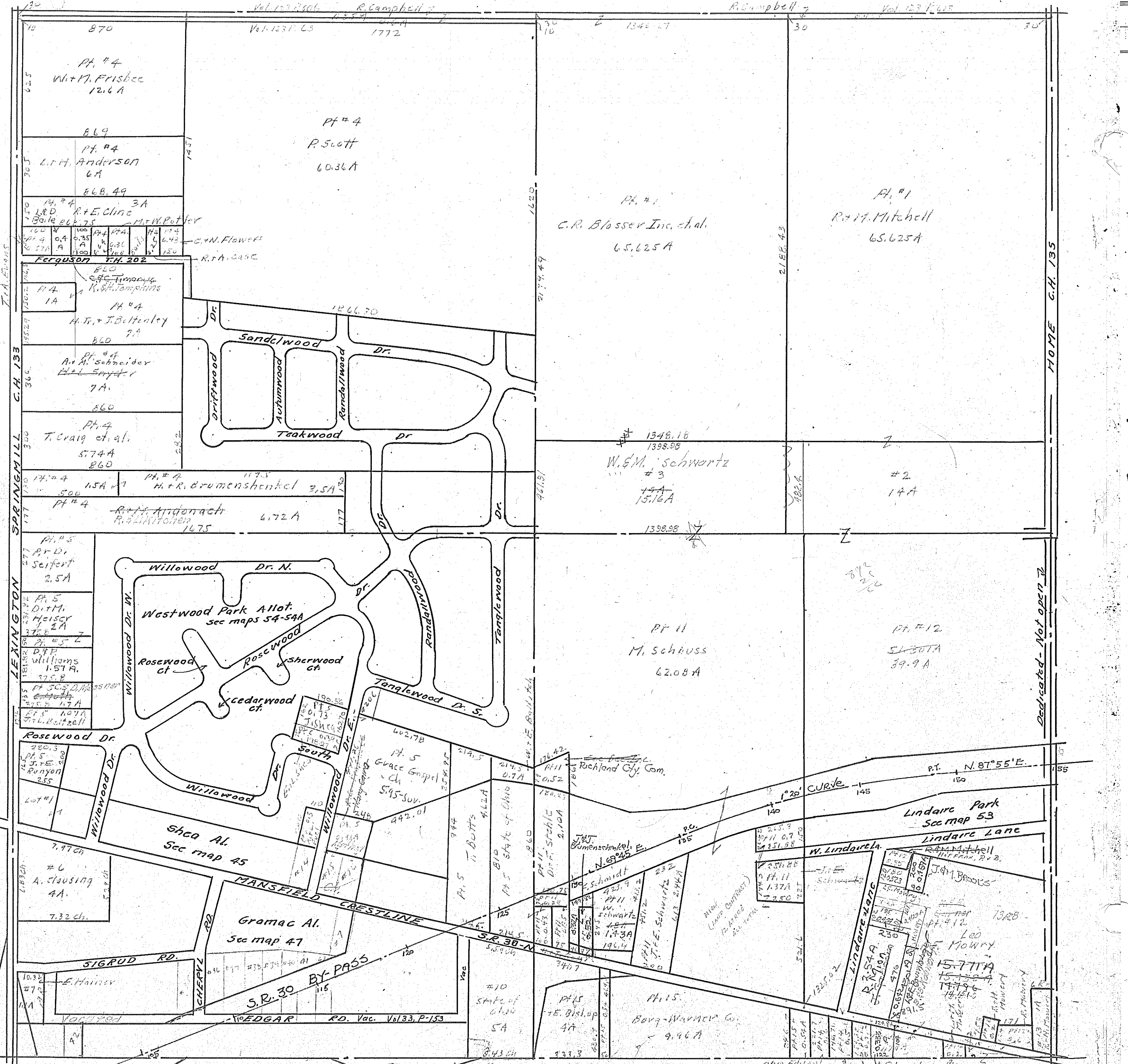


Vol. 123 P. 606 R. Campbell
Vol. 123 P. 63 1772

R. Campbell Vol. 123 P. 615



LEXINGTON C.H. 133

HOME C.H. 135

Dedicated - Not open

Ontario Corp

Twp. 21-R. 19

Chris Edmond RDM Realty N. Stumacher & Co. Inc.
SPRINGFIELD TWP SEC. 13
AR - Pocket 9 Folder 2