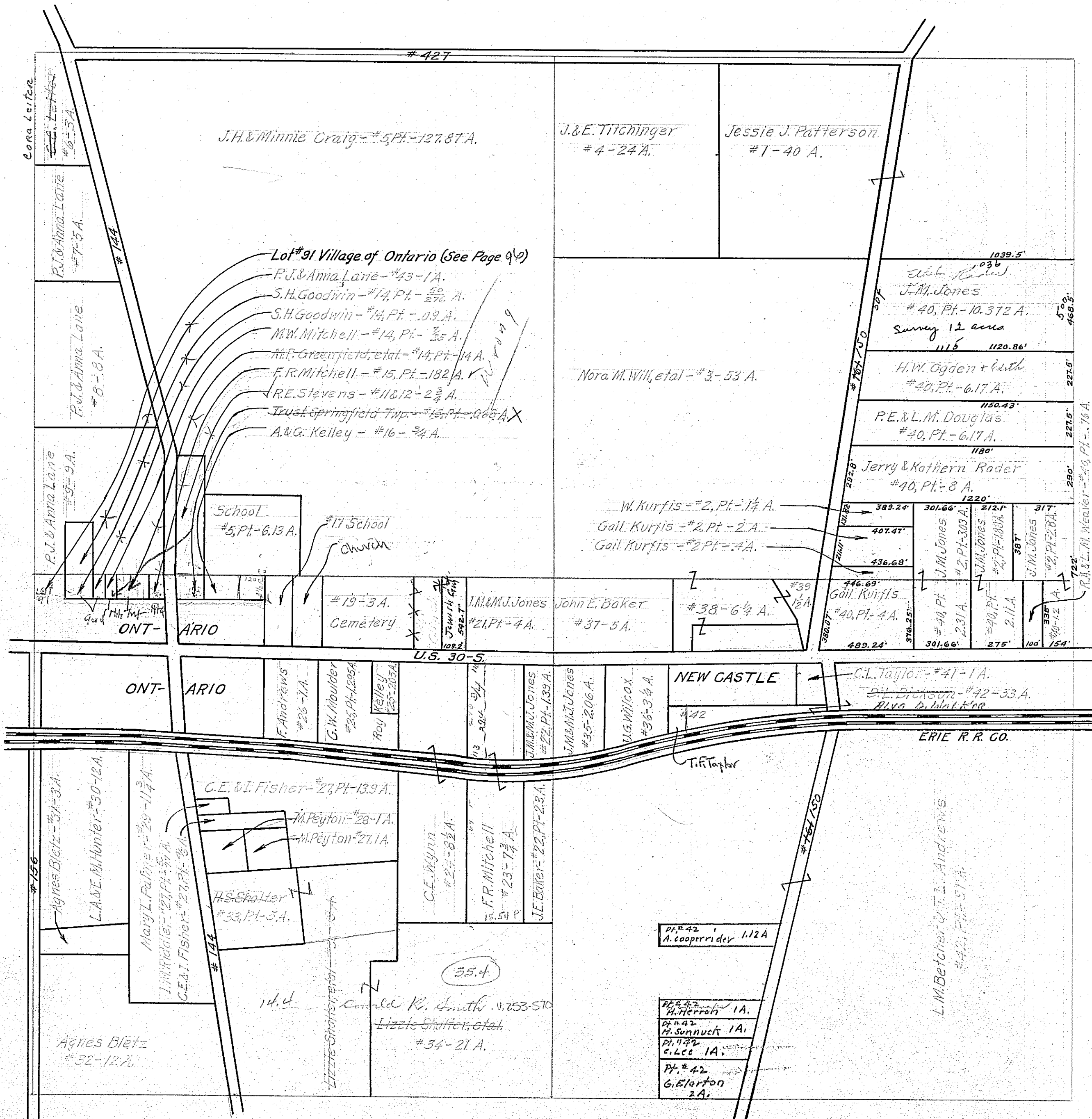


Valuation of Real Property

Section 21 Township 21 Range 19

SCALE: - 1" = 400'



J.H. & Minnie Craig - #5 Pt. - 127.87 A.

J.E. Titchinger #4 - 24 A.

Jessie J. Patterson #1 - 40 A.

Lot #91 Village of Ontario (See Page 90)

P.J. & Anna Lane - #43 - 1 A.

S.H. Goodwin - #14 Pt. - 50/276 A.

S.H. Goodwin - #14 Pt. - .09 A.

M.W. Mitchell - #14 Pt. - 2/35 A.

M.F. Greenfield, et al. - #14 Pt. - 1/4 A.

F.R. Mitchell - #15 Pt. - 182 A.

R.E. Stevens - #11 & 12 - 2 3/4 A.

Trust Springfield Twp. - #15 Pt. - 966 A.

A. & G. Kelley - #16 - 3/4 A.

School #5 Pt. - 6.13 A.

#17 School Church

#19 - 3 A. Cemetery

J.M. & M.J. Jones #21 Pt. - 4 A.

John E. Baker #37 - 5 A.

#38 - 6 1/4 A.

Gail Kurfis #40 Pt. - 4 A.

W. Kurfis - #2 Pt. - 1 1/2 A.

Gail Kurfis - #2 Pt. - 2 A.

Gail Kurfis - #2 Pt. - 4 A.

J.M. Jones #2 Pt. - 303 A.

J.M. Jones #2 Pt. - 180 A.

J.M. Jones #2 Pt. - 28 A.

Jerry & Kathern Rader #40 Pt. - 8 A.

P.E. & L.M. Douglas #40 Pt. - 6.17 A.

H.W. Ogden + wife #40 Pt. - 6.17 A.

J.M. Jones #40 Pt. - 2.31 A.

J.M. Jones #40 Pt. - 2.11 A.

J.M. Jones #40 Pt. - 1.2 A.

G.L. Taylor - #41 - 1 A.

D.L. Dickson - #42 - 33 A.

Blva. D. Walker

ONT-ARIO

ONT-ARIO

F. Andrews #26 - 1 A.

G.W. Moulder #25 Pt. - 1295 A.

Roy Kelley #25 - 205 A.

J.M. & M.J. Jones #22 Pt. - 139 A.

J.M. & M.J. Jones #35 - 206 A.

U.G. Wilcox #36 - 3 1/4 A.

NEW CASTLE

ERIE R.R. CO.

Agnes Bletz #32 - 12 A.

Mary L. Palmer #29 - 1 1/2 A.

J.M. Riddle #23 Pt. - 57 A.

C.E. & I. Fisher #27 Pt. - 139 A.

M. Peyton #28 - 1 A.

M. Peyton #27 - 1 A.

H.S. Shafter #33 Pt. - 5 A.

C.E. Wynn #27 - 8 1/2 A.

F.R. Mitchell #23 - 7 1/2 A.

J.E. Baker #22 Pt. - 23 A.

L.A. & E. M. Hunter #30 - 12 A.

J.M. Riddle #23 Pt. - 57 A.

C.E. & I. Fisher #27 Pt. - 139 A.

M. Peyton #28 - 1 A.

M. Peyton #27 - 1 A.

H.S. Shafter #33 Pt. - 5 A.

C.E. Wynn #27 - 8 1/2 A.

F.R. Mitchell #23 - 7 1/2 A.

J.E. Baker #22 Pt. - 23 A.

ERIE R.R. CO.

L.M. Belcher & T.L. Andrews #40 Pt. - 31 A.

L.M. Belcher & T.L. Andrews #40 Pt. - 31 A.

L.M. Belcher & T.L. Andrews #40 Pt. - 31 A.

L.M. Belcher & T.L. Andrews #40 Pt. - 31 A.

L.M. Belcher & T.L. Andrews #40 Pt. - 31 A.

L.M. Belcher & T.L. Andrews #40 Pt. - 31 A.

L.M. Belcher & T.L. Andrews #40 Pt. - 31 A.

L.M. Belcher & T.L. Andrews #40 Pt. - 31 A.

L.M. Belcher & T.L. Andrews #40 Pt. - 31 A.

L.M. Belcher & T.L. Andrews #40 Pt. - 31 A.

L.M. Belcher & T.L. Andrews #40 Pt. - 31 A.

L.M. Belcher & T.L. Andrews #40 Pt. - 31 A.

L.M. Belcher & T.L. Andrews #40 Pt. - 31 A.

L.M. Belcher & T.L. Andrews #40 Pt. - 31 A.

L.M. Belcher & T.L. Andrews #40 Pt. - 31 A.

L.M. Belcher & T.L. Andrews #40 Pt. - 31 A.

L.M. Belcher & T.L. Andrews #40 Pt. - 31 A.

L.M. Belcher & T.L. Andrews #40 Pt. - 31 A.

L.M. Belcher & T.L. Andrews #40 Pt. - 31 A.

L.M. Belcher & T.L. Andrews #40 Pt. - 31 A.

L.M. Belcher & T.L. Andrews #40 Pt. - 31 A.

L.M. Belcher & T.L. Andrews #40 Pt. - 31 A.

L.M. Belcher & T.L. Andrews #40 Pt. - 31 A.

L.M. Belcher & T.L. Andrews #40 Pt. - 31 A.

L.M. Belcher & T.L. Andrews #40 Pt. - 31 A.

L.M. Belcher & T.L. Andrews #40 Pt. - 31 A.