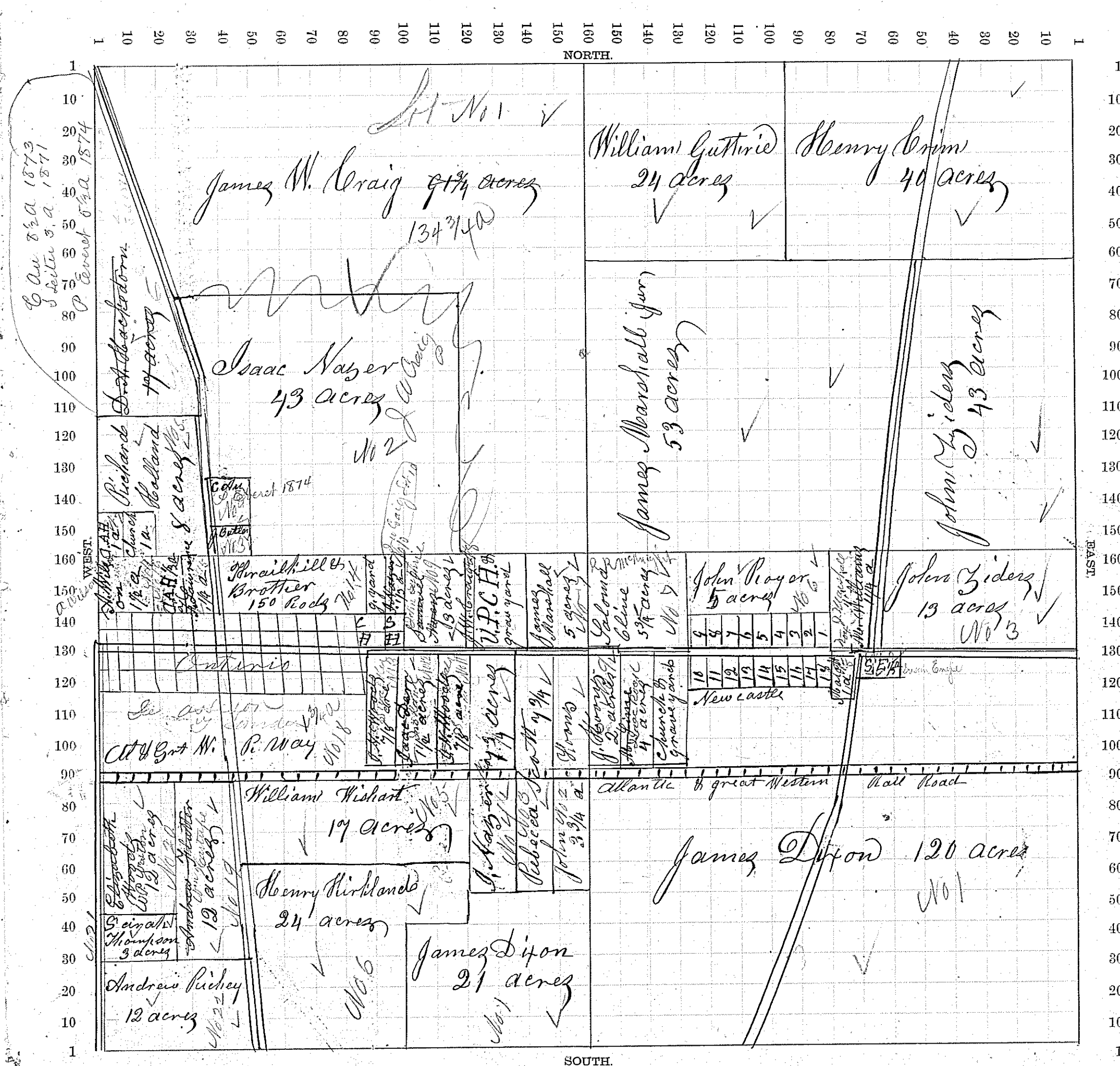


Section, No. 21

Scale, 32 Rods to an Inch, or 10 Rods to a Space.



600 8 1/2 A 1873  
 3 1/2 A 1871  
 1/2 A 1874

Richard  
 17 acres

Richard  
 8 acres

Andrew Richey  
 12 acres

James M. Craig 9 1/4 acres

Isaac Naber 43 acres

William Wishart 19 acres

Henry Kirkland 24 acres

James Dixon 21 acres

William Gutterie 24 acres

James Marshall 53 acres

John Boyer 5 acres

John Ziders 13 acres

James Dixon 120 acres

Henry Crim 40 acres

John Ziders 43 acres

John Ziders 13 acres

Atlantic & Great Western Rail Road

Deane Butler 36 rods of 5/11/1873  
 Isaac L. Rod. 3/4 A " " " " 1878

44/100  
 3.168  
 14.84

41/100 2.62  
 1.20  
 4.06 10 4.8  
 3.84  
 1.60

7/4  
 141

15 1/2