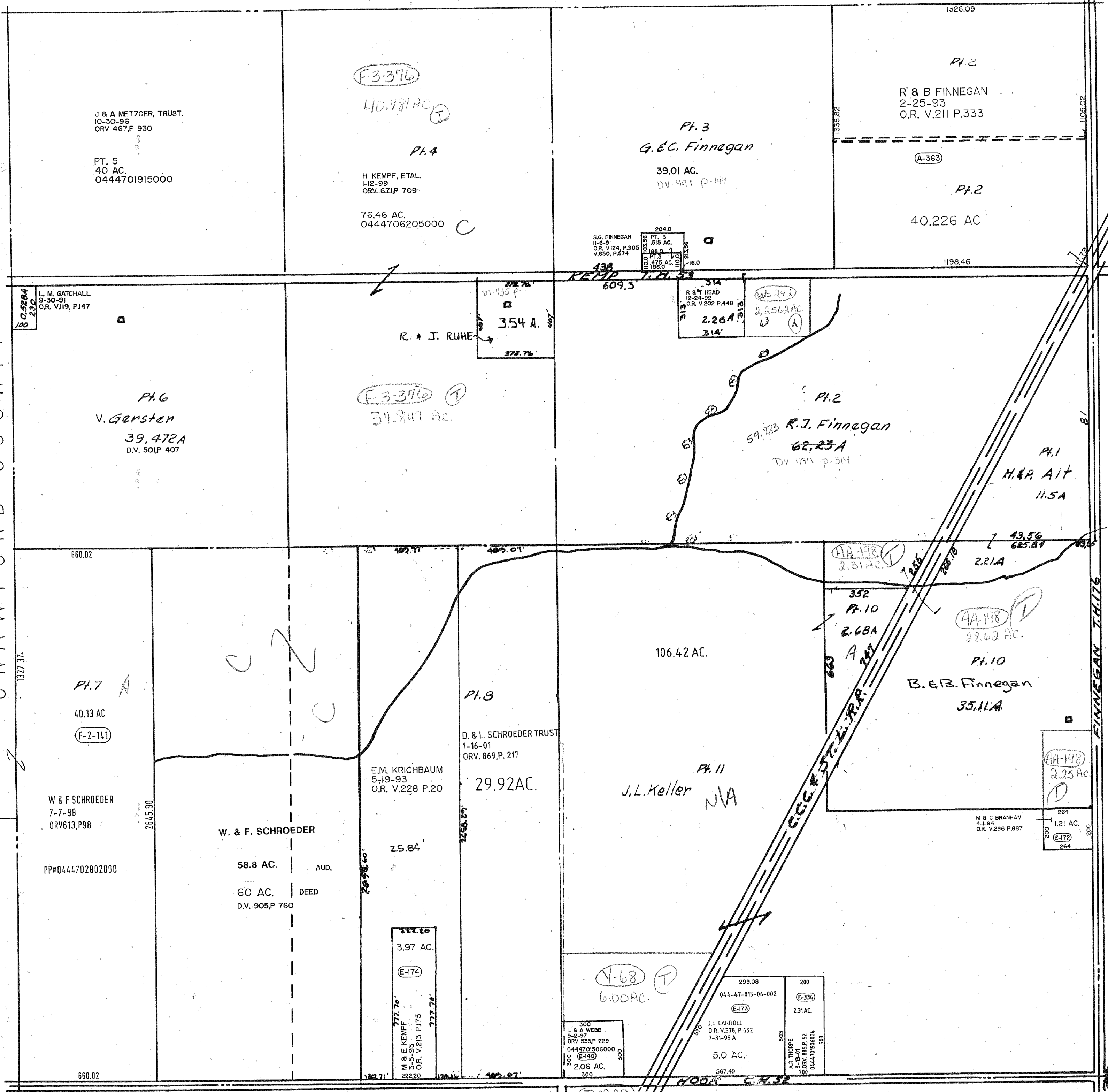


CRAWFORD COUNTY



J & A METZGER, TRUST.  
10-30-96  
ORV 467,P 930

PT. 5  
40 AC.  
0444701915000

F-3-376  
40.981 AC

Pl. 4

H. KEMPF, ETAL.  
1-12-99  
ORV. 671,P-709

76.46 AC.  
0444706205000

Pl. 3  
G. & C. Finnegan

39.01 AC.  
DV-491 P-149

Pl. 2  
R & B FINNEGAN  
2-25-93  
O.R. V.211 P.333

(A-363)

Pl. 2  
40.226 AC

S.G. FINNEGAN  
11-8-91  
O.R. V.124, P.905  
V.650, P.574

REMP  
609.3

378.76'  
35.4 A.  
378.76'

R. & J. RUME

F-3-376  
31.847 AC

Pl. 6  
V. Gersten  
39.472A  
D.V. 501,P 407

Pl. 2  
R.J. Finnegan  
59.783  
62.23A  
DV 497 P-314

Pl. 1  
H. & P. AIT  
11.5A

AA-198  
2.31 AC.

352  
Pl. 10  
2.68A

AA-198  
28.62 AC.

Pl. 10  
B. & B. Finnegan  
35.11A

AA-198  
2.25 AC.

M & C BRANHAM  
4-1-94  
O.R. V.296 P.887

264  
1.21 AC.  
E-172  
264

Pl. 8  
D. & L. SCHROEDER TRUST  
1-16-01  
ORV. 869,P. 217

29.92 AC.

E.M. KRICHBAUM  
5-19-93  
O.R. V.228 P.20

W. & F. SCHROEDER

58.8 AC. AUD.

60 AC. DEED  
D.V. 905,P 760

397.10  
3.97 AC.  
E-174

M. & E. KEMPF  
3-5-93  
O.R. V.213 P.175

300  
L & A WEBB  
9-2-97  
ORV 533,P 229  
0444701506000  
E-140  
300

V-68  
6.00 AC.

299.08  
044-47-015-06-002  
E-173

J.L. CARROLL  
O.R. V.378, P.652  
7-31-95 A

5.0 AC.

200  
E-334  
2.31 AC.

J.R. THORPE  
3-13-01  
ORV. 885,P. 52  
0444701506004  
503

SHARON

TWP. SEC. 35

TWP 21-R. 20

3-15-01