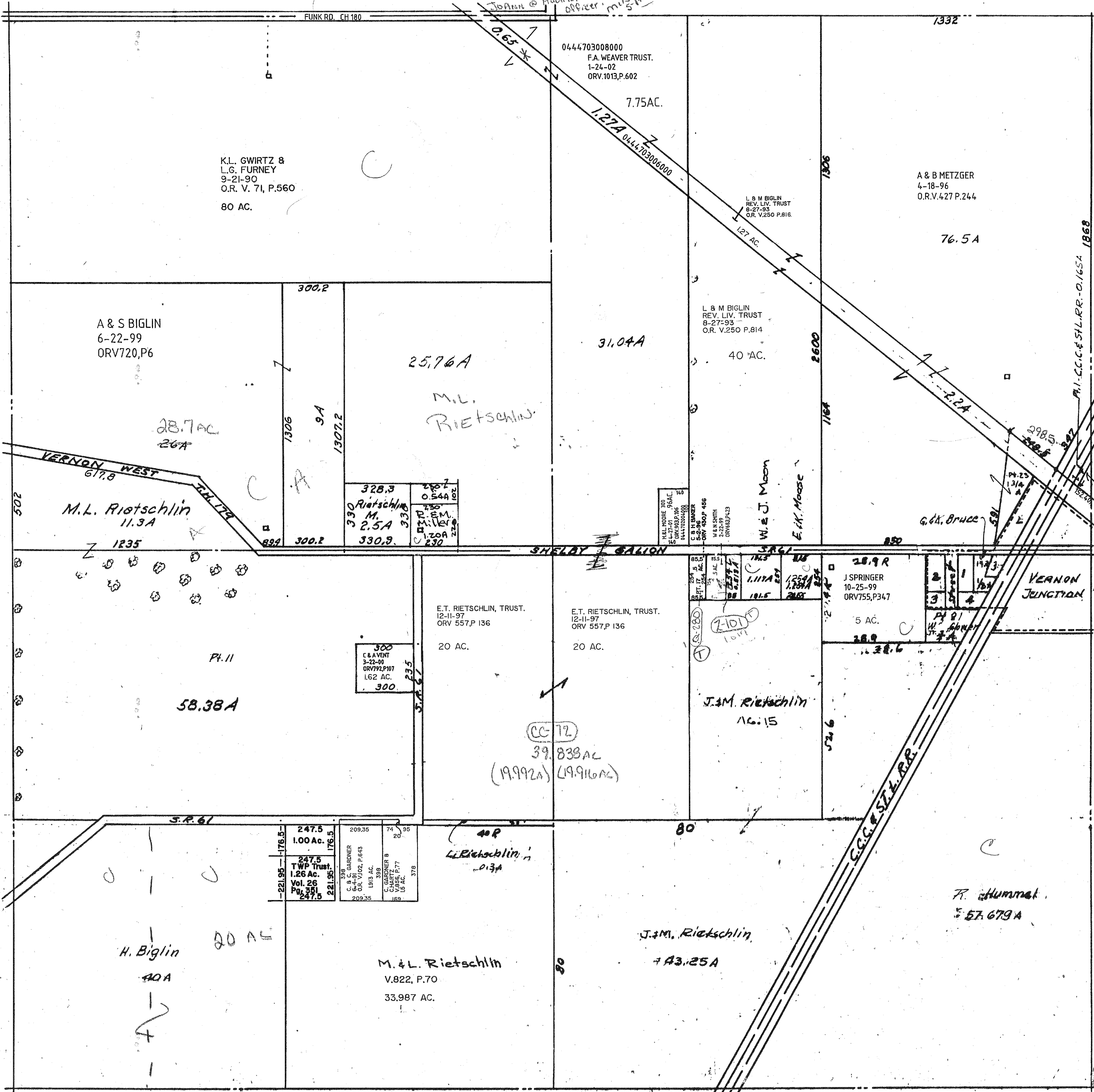


* .65 AC Parcel OK to Transfer Legal Must give Deed to Auditor's Office! m/19 5-17-06



K.L. GWIRTZ &
L.G. FURNEY
9-21-90
O.R. V. 71, P.560
80 AC.

0444703008000
F.A. WEAVER TRUST.
1-24-02
ORV.1013,P.602
7.75AC.

A & B METZGER
4-18-96
O.R.V.427 P.244
76.5A

A & S BIGLIN
6-22-99
ORV720,P6
28.7AC
26A

25.76A
M.L. RIETSCHLIN

L & M BIGLIN
REV. LIV. TRUST
8-27-93
O.R. V.250 P.814
40 AC.

M.L. Rietschlin
11.3A

328.3
330 Rietschlin
M.
2.5A
330.9

H.B. MOORE 300
14-27-01 96AC.
ORV7932,P.106
444703008000

W. & J. Moon
E. K. MOORE

A & B METZGER
10-1-99
ORV749,P611
(4.22 AC)
14.408 AC TOT.
F-2-259

SHELBY GALLON

E.T. RIETSCHLIN, TRUST.
12-11-97
ORV 557,P 136
20 AC.

E.T. RIETSCHLIN, TRUST.
12-11-97
ORV 557,P 136
20 AC.

J SPRINGER
10-25-99
ORV755,P347
5 AC.

VERNON JUNCTION

58.38A

J.M. Rietschlin
16.15

CC 12
39.838AC
(19.992A) (19.916AC)

247.5 1.00 AC.	209.35	74	95
247.5 TWP Trust 1.26 AC.	209.35	398	378
Vol. 26 Pg. 351 247.5	209.35	159	159

H. Biglin
40A

20 AC

M. & L. Rietschlin
V.822, P.70
33.987 AC.

J.M. Rietschlin
7A3.25A

R. Hummel
57.679A