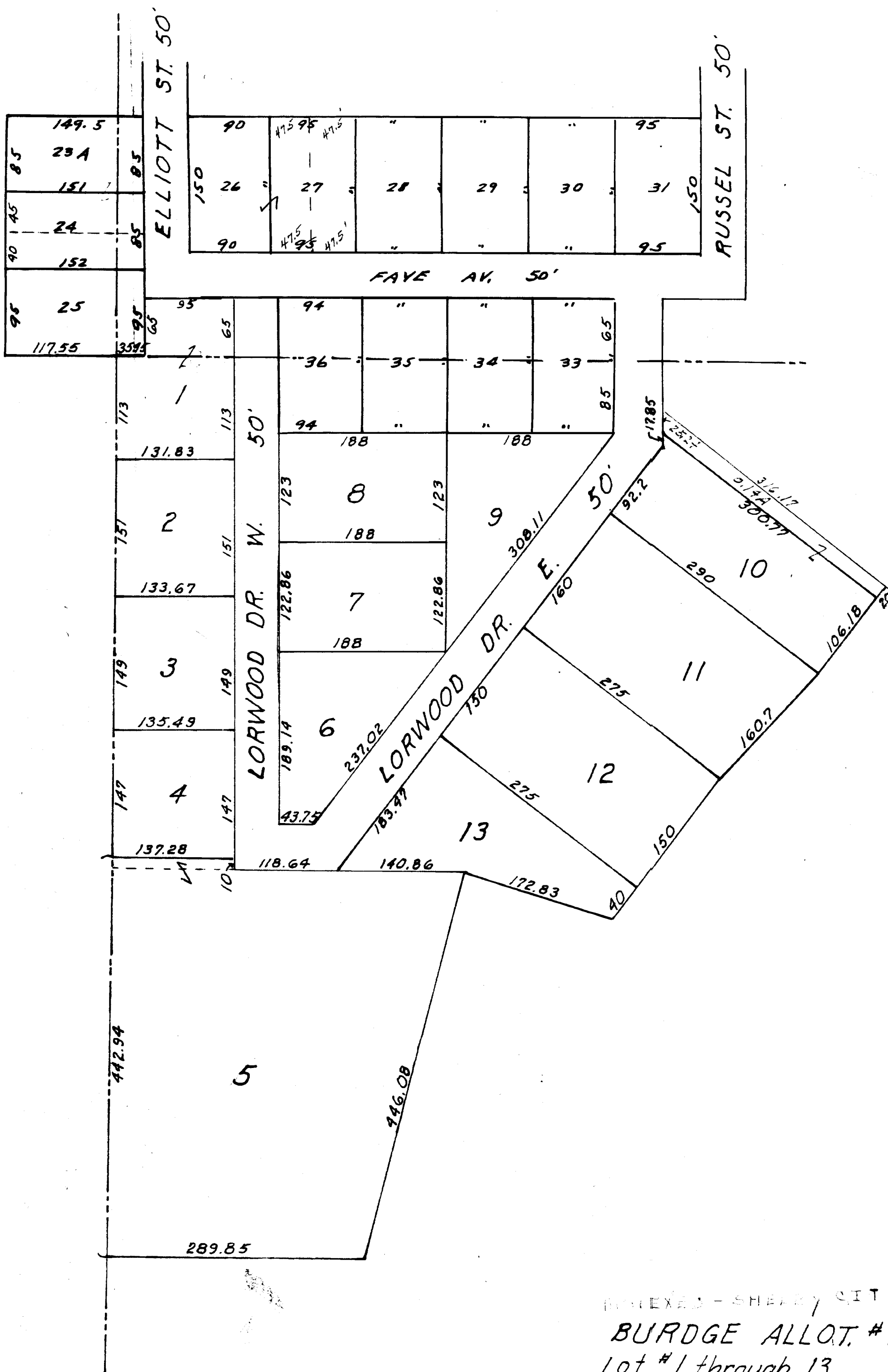


Scale  
1" = 100'



INDEXED - SHARON CITY  
BURDGE ALLOT. #1  
Lot #1 through 13  
Vol. 21 Page 74

HODGES NO. 2  
Pt. NW. 1/4, Sec. 17 & NE. 1/4 Sec. 18, Sharon Twp.  
For details see Vol. 18 P. 216 Records Plats