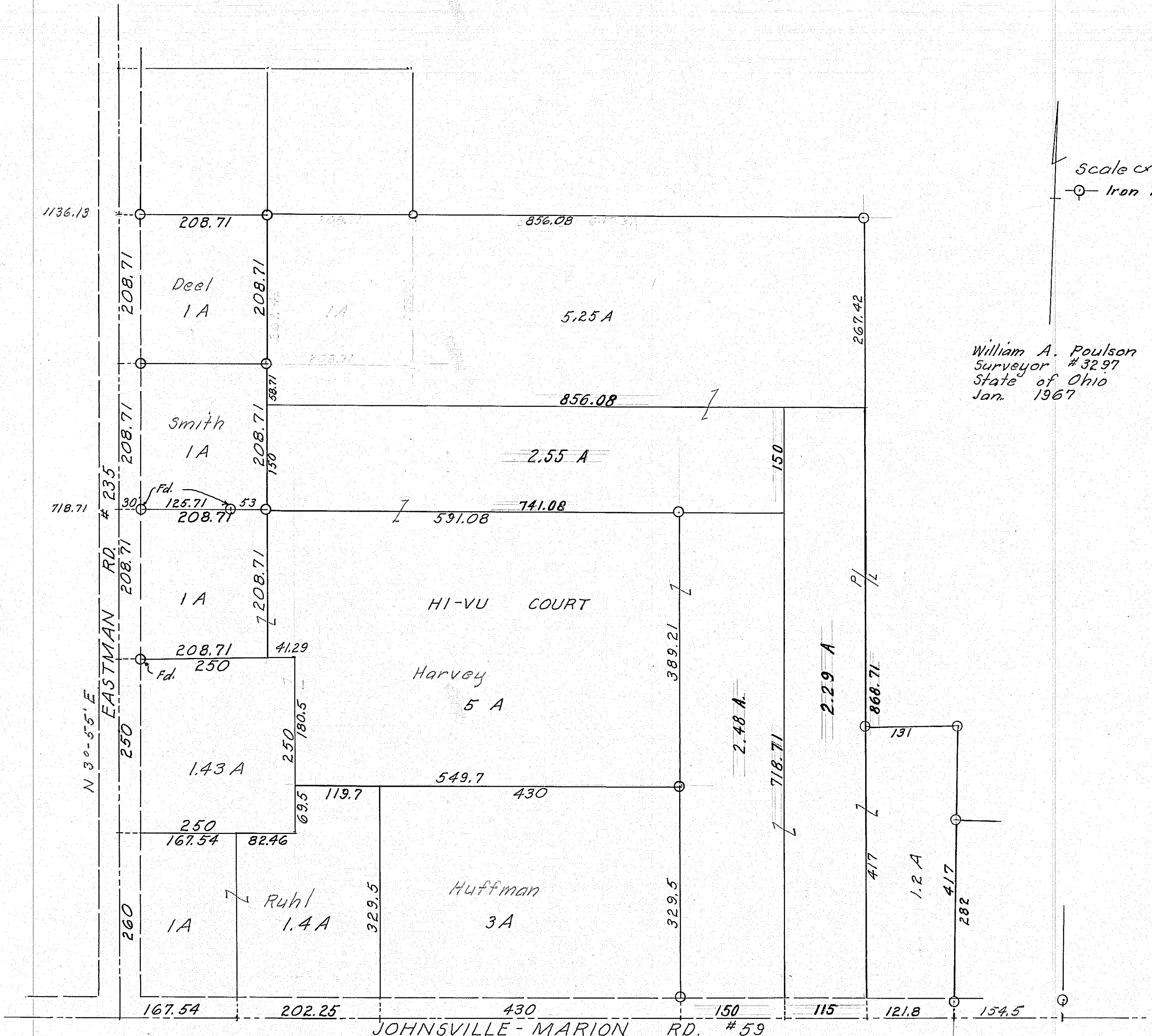


Scale $\approx 1"=100'$

Iron Pin

William A. Poulson
Surveyor #3297
State of Ohio
Jan. 1967



1136.13

208.71

856.08

208.71

208.71

5.25 A

267.42

208.71

208.71

856.08

2.55 A

150

718.71

208.71

208.71

591.08

741.08

1A

HI-VU COURT

208.71

41.29

389.21

250

180.5

Harvey
5 A

2.48 A

2.29 A

N 30-55' E

250

1.43 A

250

549.7

430

718.71

250

69.5

119.7

329.5

167.54

82.46

Huffman
3 A

868.71

131

260

1A

Ruhl
1.4 A

329.5

2.48 A

2.29 A

417

1.2 A

417

167.54

202.25

430

150

115

121.8

154.5

JOHNSVILLE - MARION RD. #59

SW Cor., SE Qr.
Section 6,

S 85°-43' E

T-19, R-19

PERRY TWP., SECT. 6 SE QR.
MORROW COUNTY, OHIO