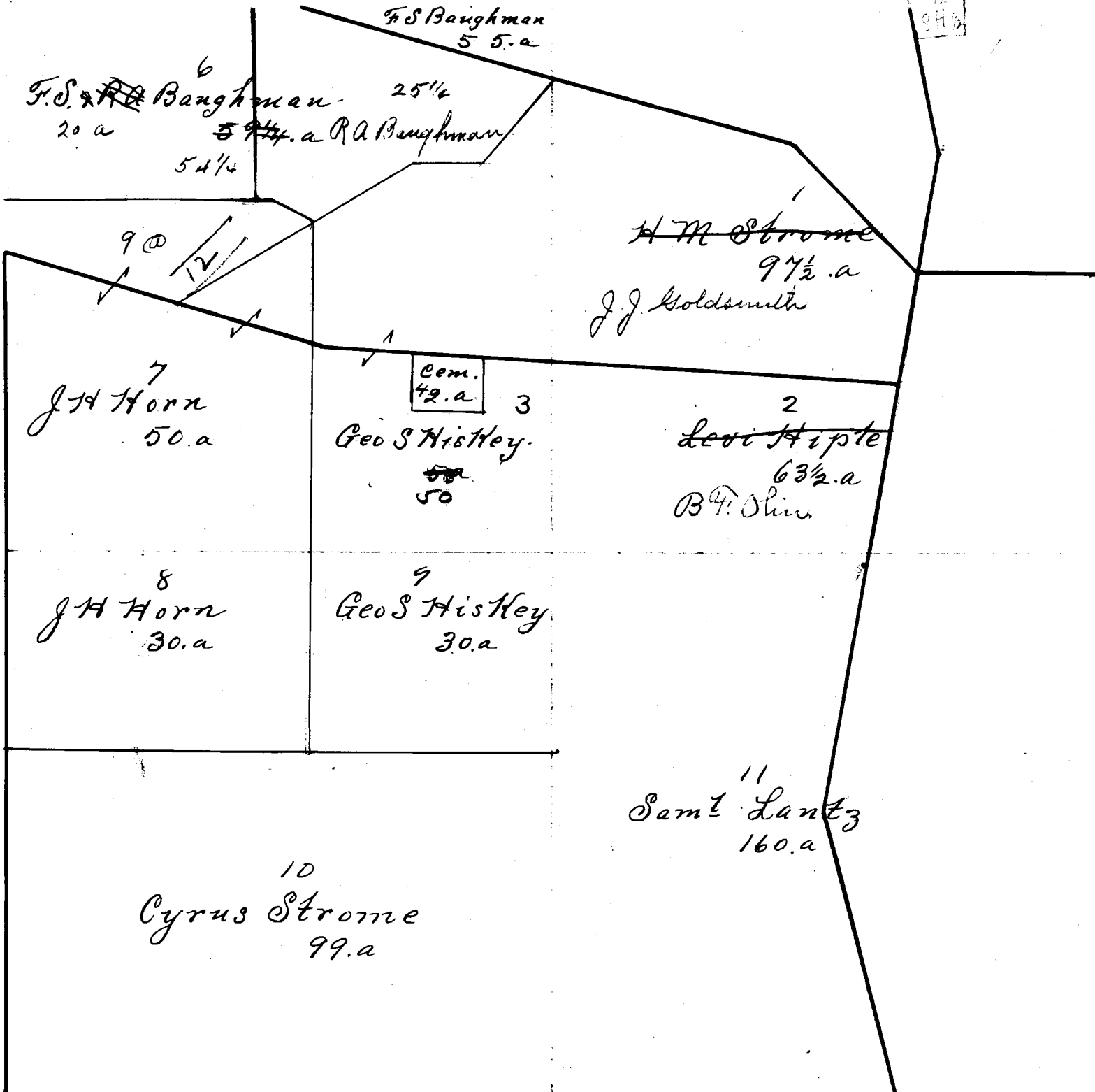


Section No. 11. Tp 19. R 19.

SCALE: Forty ^{Feet} to an Inch or Ten Feet to One-Quarter Inch.

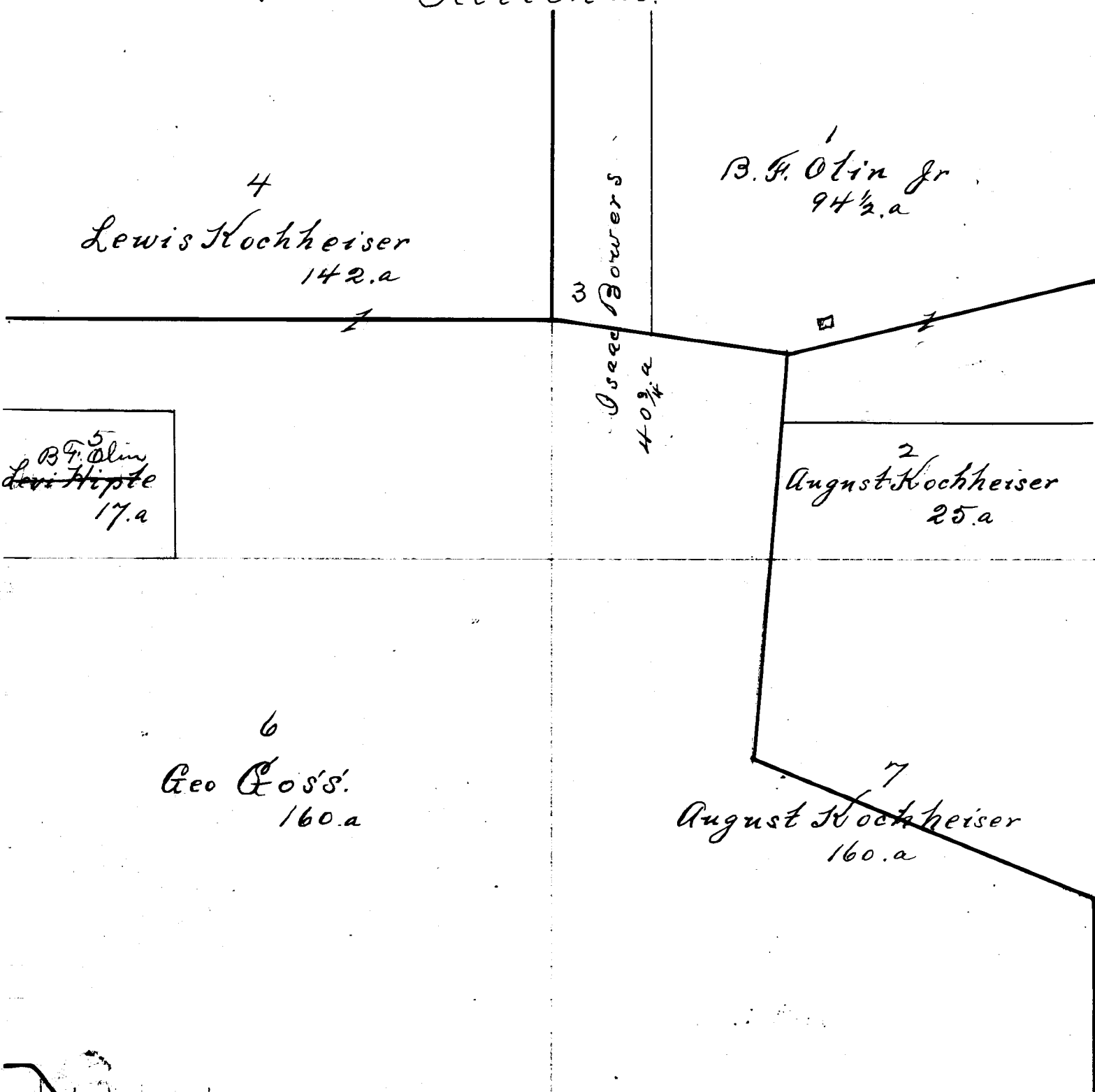


Assessment of Real

IN WHOSE NAME ASSESSED.

- Baughman, F. S.
- Baughman, F. S. & R. A.
- Hiple, Levi.
- Hiskey, Geo. S.
- Hiskey Geo. S.
- Horn, J. H.
- Horn, J. H.
- Lantz, Saml
- Strome, H. M.
- Strome Cyrus.

Section 12.



- Bowers, Isaac.
- Goss, Geo.
- Hiple, Levi.
- Hochheiser, August
- Hochheiser, August
- Hochheiser, Lewis
- Olin, Jr. B. F.