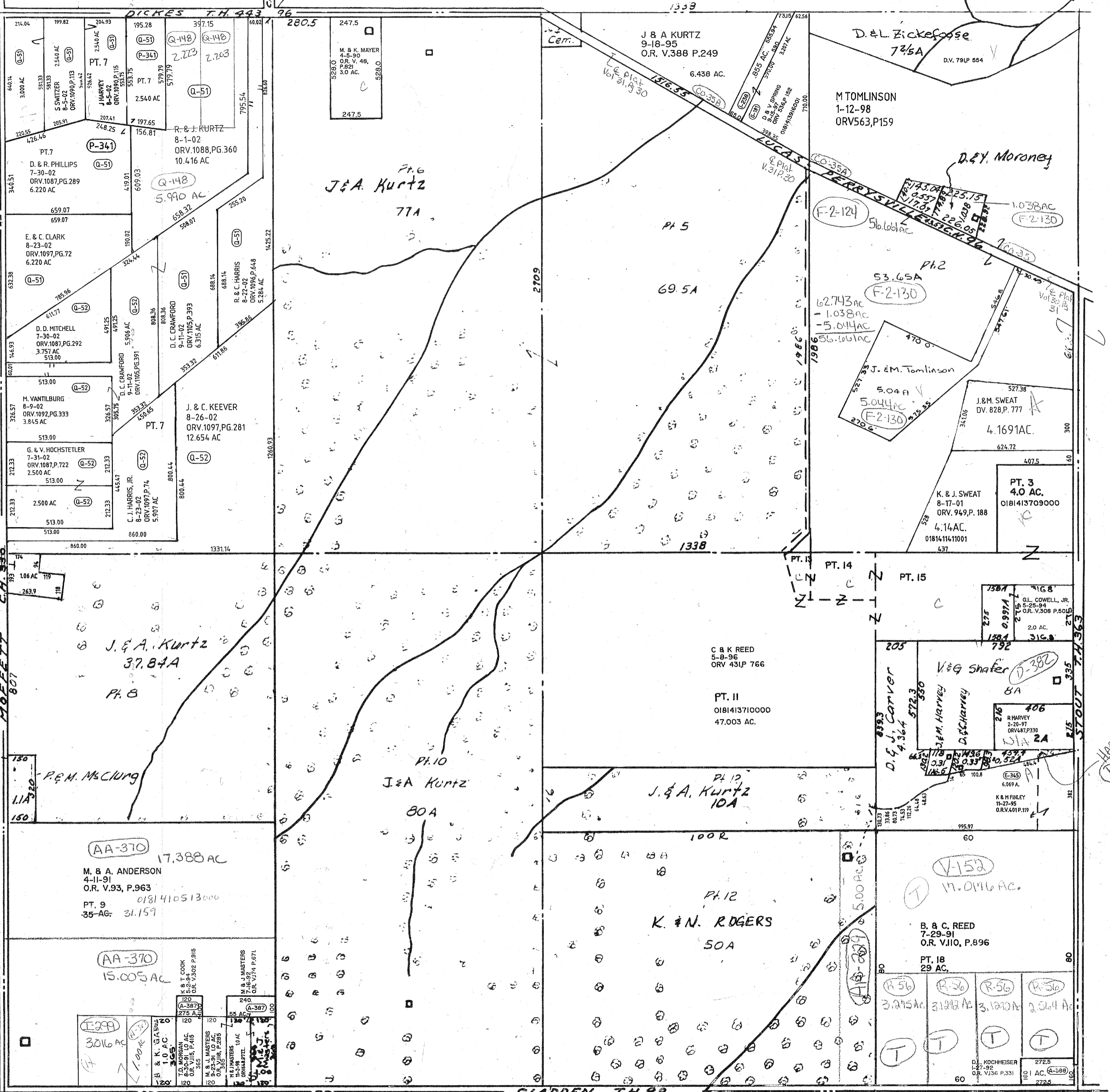


Rot chg  
Com. J. G. 1027  
#271  
M.L. McCOLLISTER  
7-6-87  
DW. 895, PG. 121

MOFFETT CH. 330  
807

130  
11A  
150



AA-370  
17,388 AC  
M. & A. ANDERSON  
4-11-91  
O.R. V.93, P.963  
PT. 9  
35-AG: 31.159

AA-370  
15,005 AC  
K & T COOK  
8-2-91  
O.R. V.105, P.391

T-299  
3016 AC  
T-300  
1.00 AC  
T-301  
1.00 AC  
T-302  
1.00 AC  
T-303  
1.00 AC  
T-304  
1.00 AC  
T-305  
1.00 AC  
T-306  
1.00 AC  
T-307  
1.00 AC  
T-308  
1.00 AC  
T-309  
1.00 AC  
T-310  
1.00 AC

Twp 22-R.17

MONROE TWP.  
SEC. 16

9-16-02