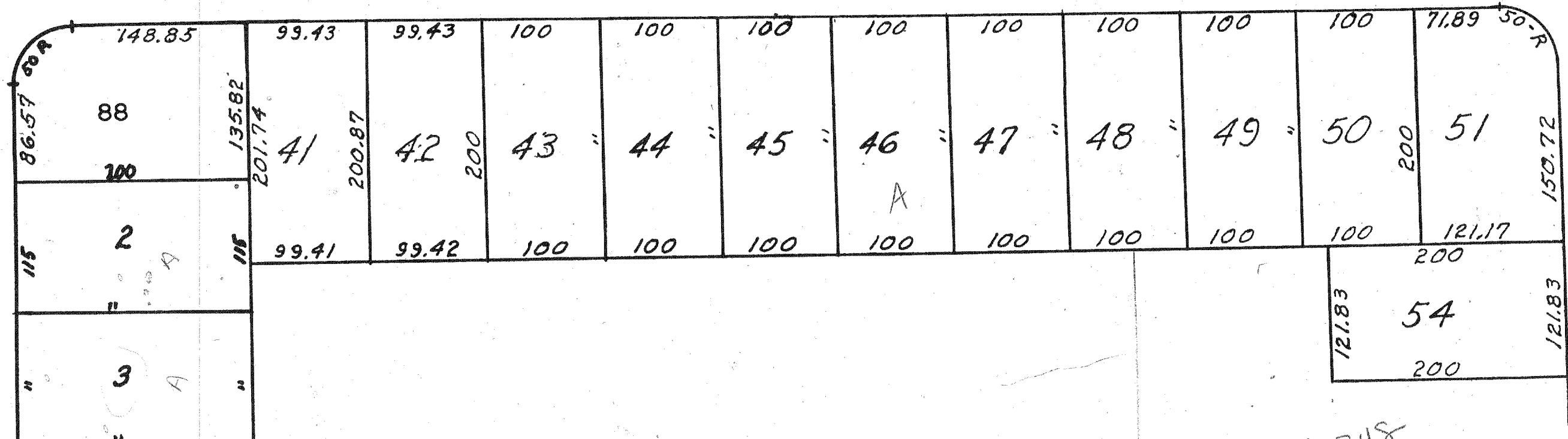
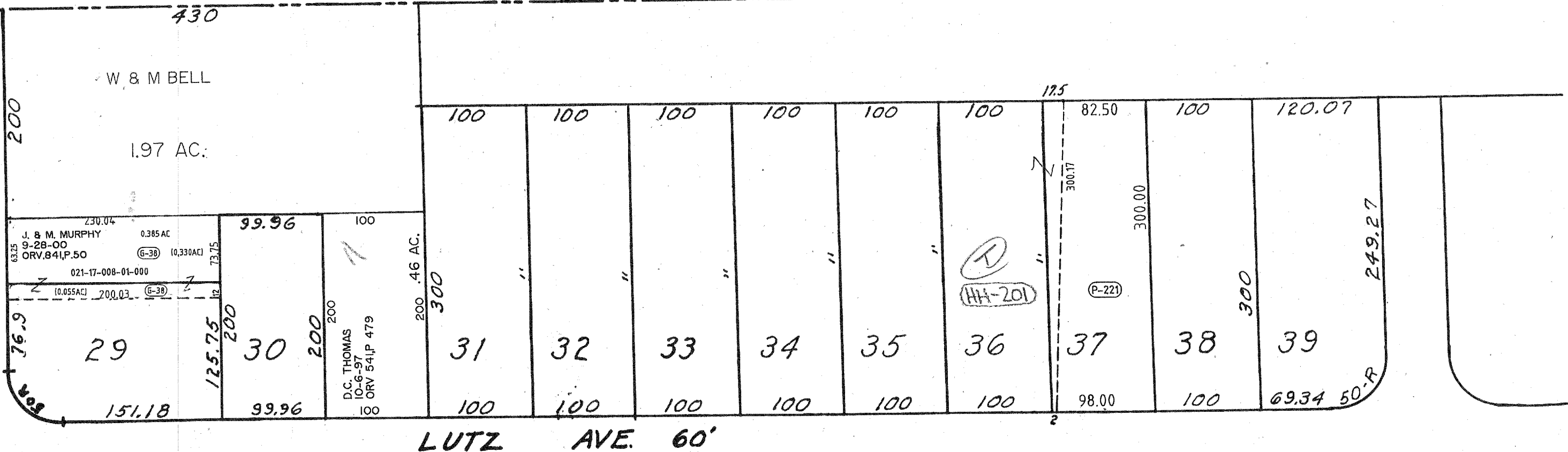


N. Line SW Qr. Section 21

TH-298
WOLF RD.
SW Line SW Qr. Section 21



V.F. HARP & SONS

F-4-162
24.515 AC

G & J GRAY
6-5-96
ORV. 437, P. 740
2.3414 AC
G-142
400

* NON-MAINTAINED STATUS
9-27-07
ORV. 1793, P. 463

* THESE PARCELS NEED A
S&E FOR THE AREAS
THAT ARE IN DEDICATED
ROAD R/W AS PLATTED
IN PLAT VOL. 21, P. 13, 22, P. 37

54

Vol. 21, Page 130, Lot 1-7
22 37 29-39, 41-51, 54-59

MOHICAN ESTATES SEC. A-B
Mifflin Twp. SW Qr. Section 21

LOTS 4-9 AND 55-59 VAC. 10-17-83

6-20-02