

HALE RD. TH-276

951.2

838.4

338.63

400

R & V HELBERT REV. LIV. TRUST  
2-4-93  
O.R. V.208 P.504

3.3 AC.  
dd-190  
3.305 AC

S. & D. PIFHER  
12-12-01  
ORV. 995, P. 724

5.261 AC

D-116

L-40

F-3-286  
4.69 AC

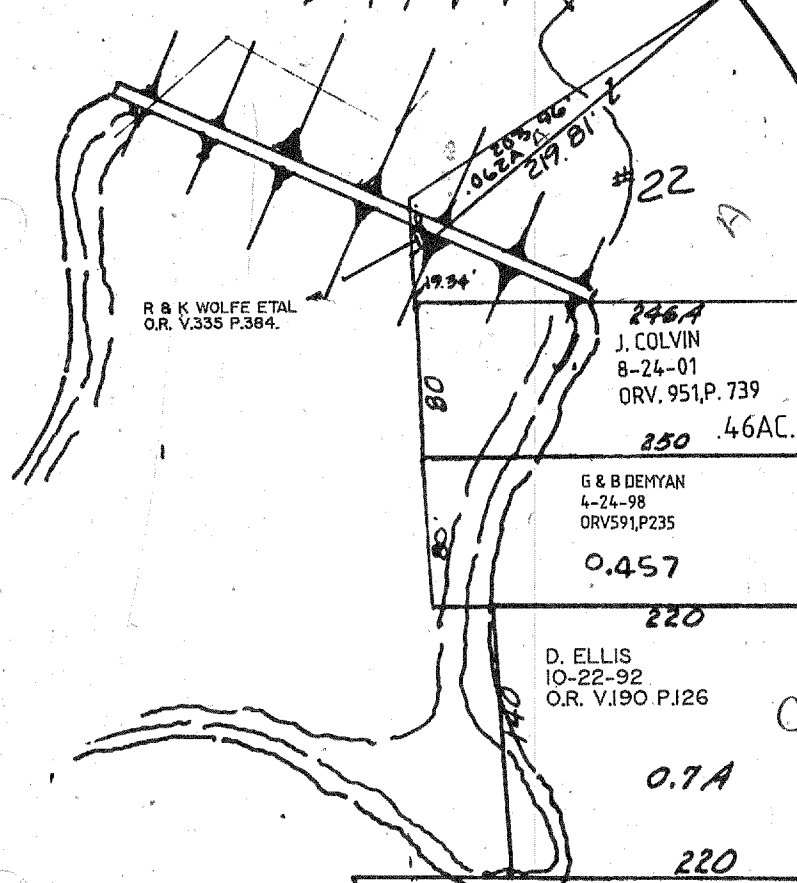
M.L. HALE

21.257 AC.  
0211717325000

F-3-286  
15.41 AC

N/A

PUBLIC PARK



R & K WOLFE ETAL  
O.R. V.335 P.384

246A  
J. COLVIN  
8-24-01  
ORV. 951, P. 739  
4.6 AC.

G & B DEMYAN  
4-24-98  
ORV. 591, P. 235  
0.457

D. ELLIS  
10-22-92  
O.R. V.190 P.126  
0.7 A

R. & N. CICALANI  
10-5-65  
DV. 567, P. 62  
0211701103000  
1.58 A

1.58 A

ESTATES DRIVE

LAKEWOOD AVE. 60'

E. & M. Seamour  
2.79 A

115 AC.  
E.L. VonSee  
O.R. V.145, P.657  
3-13-92  
dd-263  
1.23 AC

354.87

7-16-02

Vol.  
21  
24

Page  
106  
39

Lot No.  
1-11  
Re-Plat

T-23, R-17  
WINDSOR ESTATES  
MIFFLIN TWP., SECTION 5, SW QR.

52

1358.77  
E Line SW QR. Sect. 5