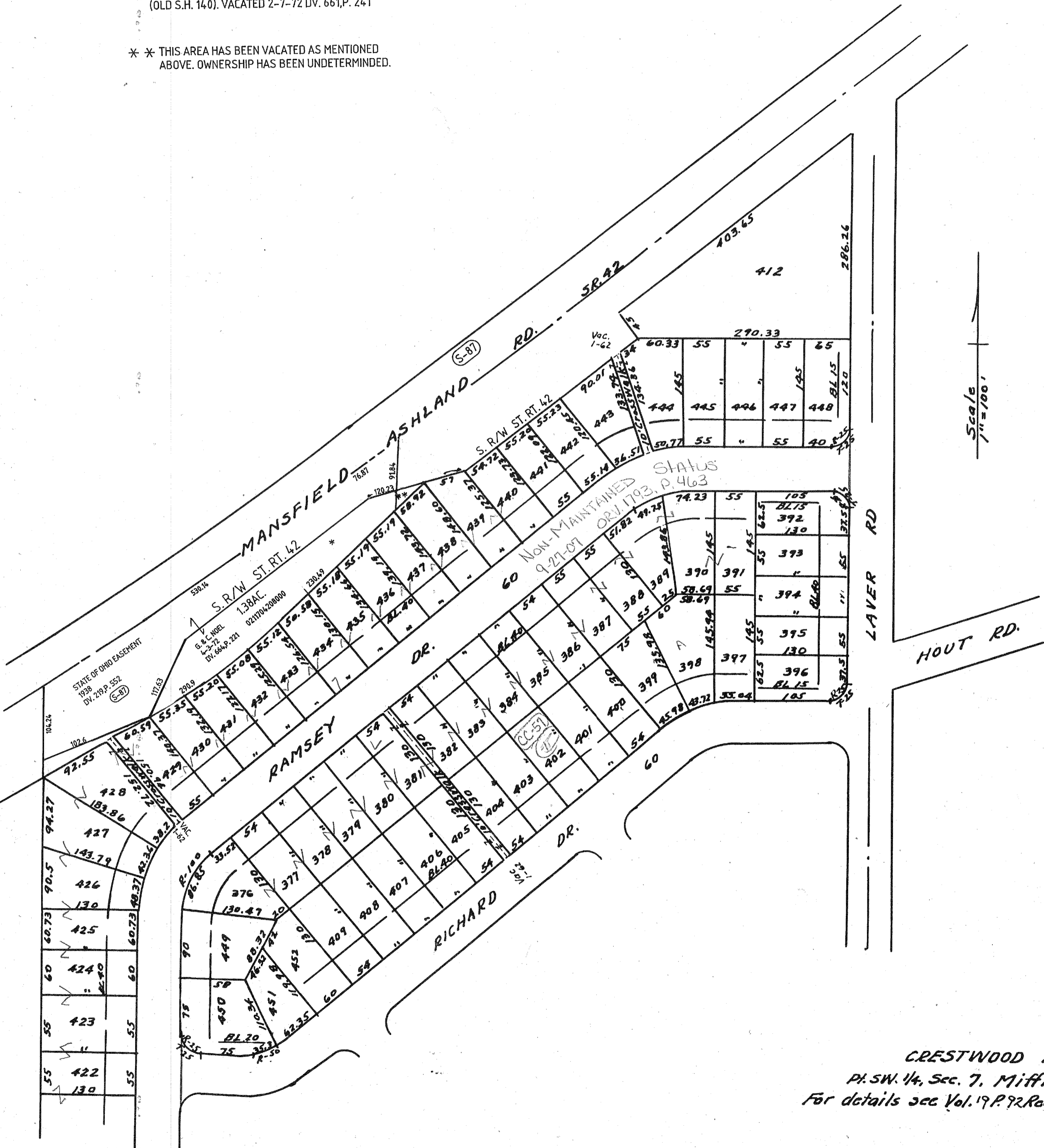


* THIS AREA IS VACATED PORTION OF FORMER ST. RT. 42
(OLD S.H. 140). VACATED 2-7-72 DV. 661, P. 241

* * THIS AREA HAS BEEN VACATED AS MENTIONED
ABOVE. OWNERSHIP HAS BEEN UNDETERMINED.



Scale
1/4" = 100'

CRESTWOOD HILLS
Pl. SW. 14, Sec. 7, Mifflin Twp.
For details see Vol. 19 P. 92 Recorders Plats

MIFFLIN TWP. ALLOTS

40-C

2-2-01