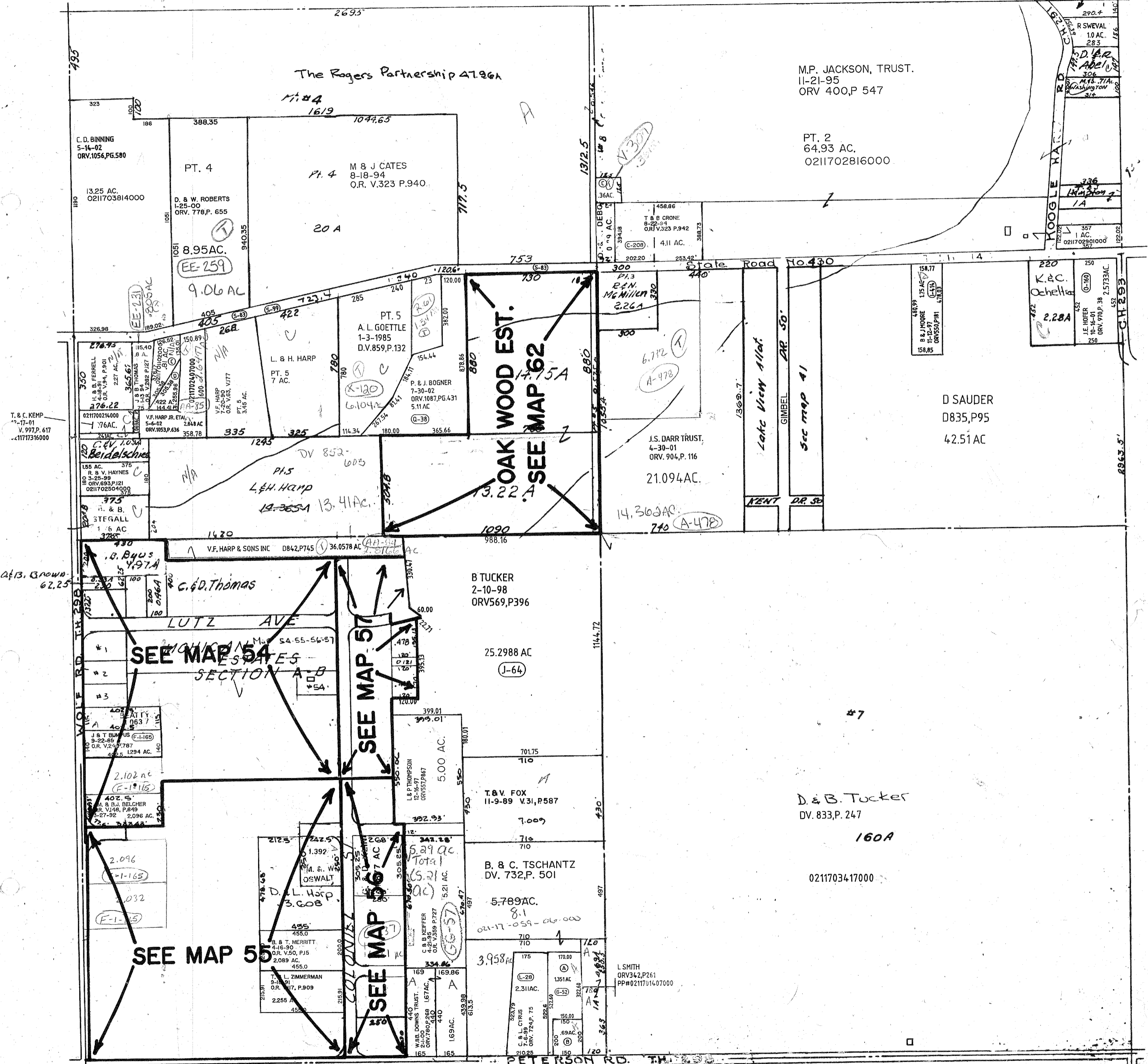


© J.G. WHITESEL  
5-8-01  
ORV. 907, P. 515  
36AC.

Mifflin Twp. Trustees 1 Acre



T. & C. KEMP  
7-17-01  
V. 997, P. 617  
211717316000

213.3 row  
67.25

SEE MAP 54  
SECTION A-B

SEE MAP 57

SEE MAP 55

SEE MAP 56

(A) P. & P. HICKS  
4-1-96  
ORV. 423, P. 206

(B) P. & P. HICKS  
DV. 765, P. 87

(C) J. G. CHUMBLEY  
2-29-96  
ORV. 416, P. 784

Twp. 23 R. 17

(D) H. & J. CHUMBLEY  
2-1-91  
ORV. 86, P. 955

MIFFLIN TWP  
SEC. 21