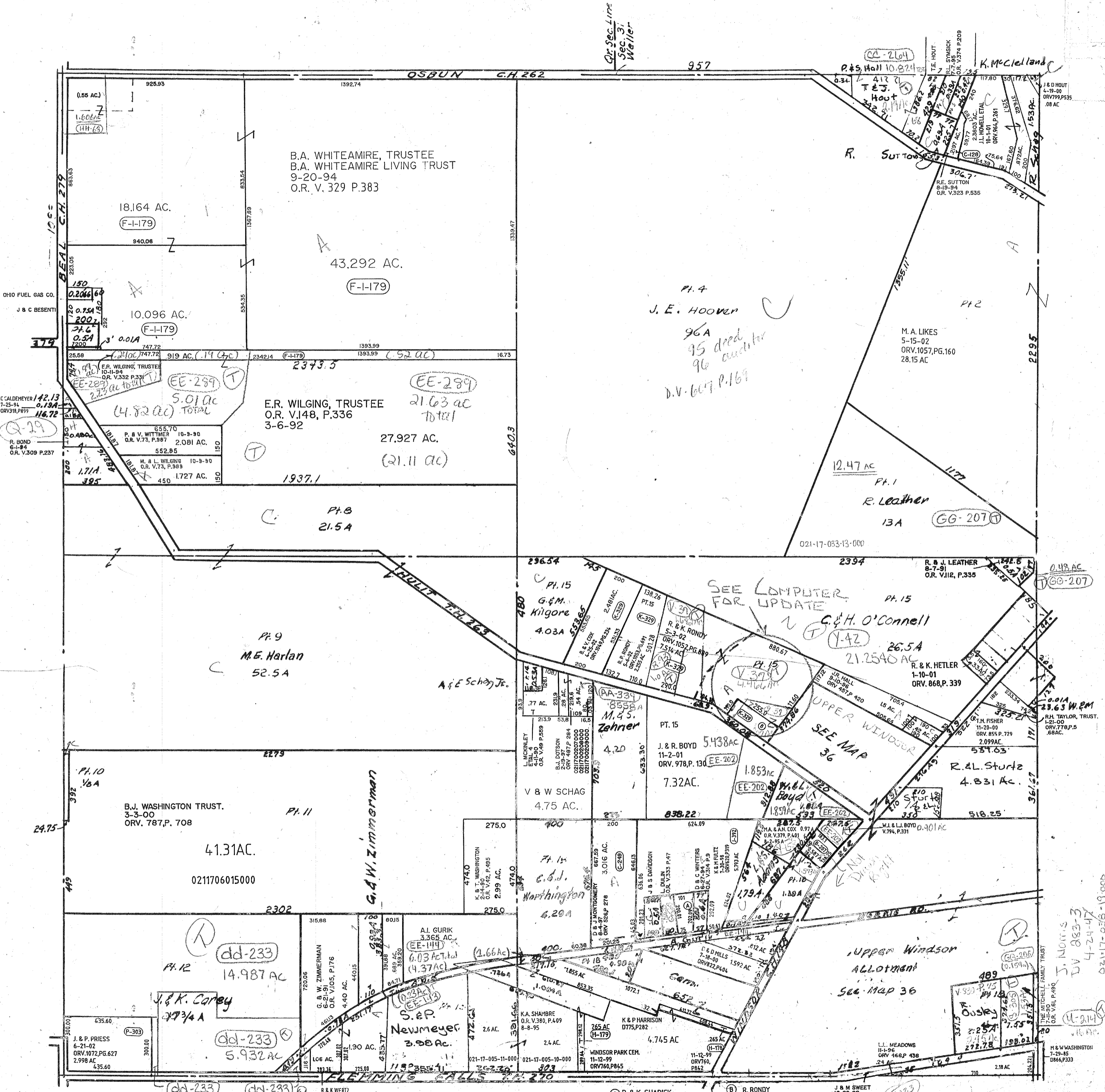


Dr. Sec. Line
Sec. 31
Weller



B.A. WHITEAMIRE, TRUSTEE
B.A. WHITEAMIRE LIVING TRUST
9-20-94
O.R. V. 329 P.383

18.164 AC.
(F-I-179)

43.292 AC.
(F-I-179)

10.096 AC.
(F-I-179)

E.R. WILGING, TRUSTEE
O.R. V.148, P.336
3-6-92

27.927 AC.
(21.11 ac)

PI. 9
M.E. Harlan
52.54

PI. 15
G.M. Kilgore
4.03A

SEE COMPUTER FOR UPDATE
C.H. O'Connell
26.5A
21.2540 AC

R. & K. HETLER
1-10-01
ORV. 868, P. 339

B.J. WASHINGTON TRUST.
3-3-00
ORV. 787, P. 708

41.31 AC.
0211706015000

V & W SCHAG
4.75 AC.

J. & R. BOYD
11-2-01
ORV. 978, P. 130

PI. 12
14.987 AC
dd-233

J. & K. Carby
59 3/4 A

5.932 AC
dd-233

S.E.P. Newmeyer
3.98 AC.

P. & K. SHARICK
11-20-01
ORV. 985, P. 445
0211705106000
404 AC. (0-192)

R. RONDY
7-19-96
ORV. 447, PG. 152
55 AC.

J & M SWEET
10-29-92
OR. V. 191 P. 805
14 AC.

MIFFLIN TWP.
SEC. 6

J. NORRIS
DV 883-3
4-24-47
02117-036-19000

M & W WASHINGTON
7-29-85
D866, P. 333