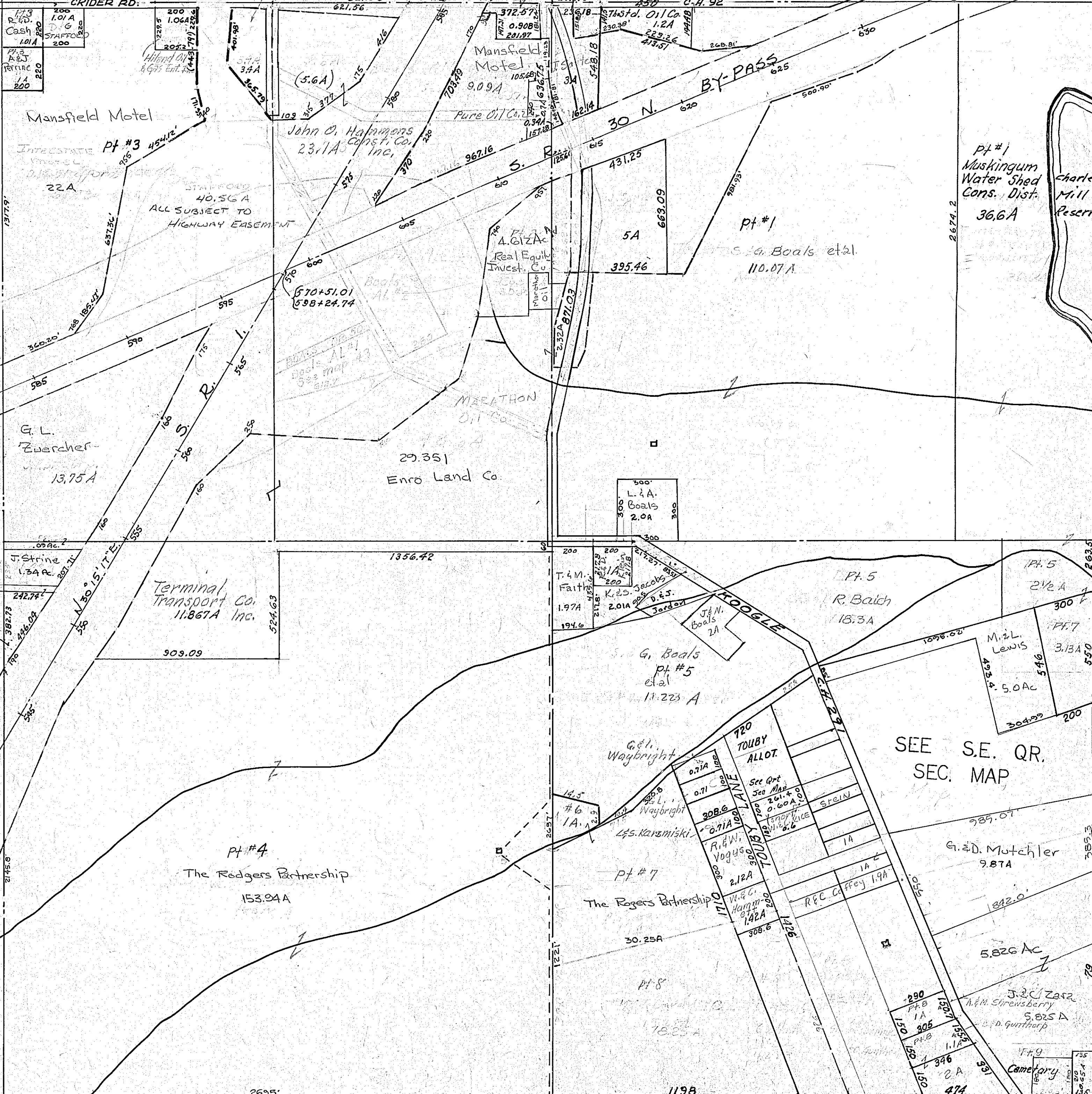


CRIDER RD.

Lester W. Stafford

SUN OIL CO.



pt #1
Muskingum
Water Shed
Cons. Dist.
36.6A
Charles
Mill
Reservoir

pt #1
S.G. Boals et al.
110.07A

Enro Land Co.
29.351

Terminal
Transport Co.
11.867A Inc.

pt #4
The Rogers Partnership
153.94A

pt #7
The Rogers Partnership
30.25A

SEE S.E. QR.
SEC. MAP

G.D. Mutchler
9.87A

5.826 AC
J.C. Zasa
N.M. Strenberry
5.825A
D. Gunthrop

pt #9
Cemetery

MIFFLIN TWP.
SEC. 16

Twp. 23-R.17

SHELLY
ESTATES
Lot # 22
pt.
See Map
#51

U.S. COURSE OF STAFFORD