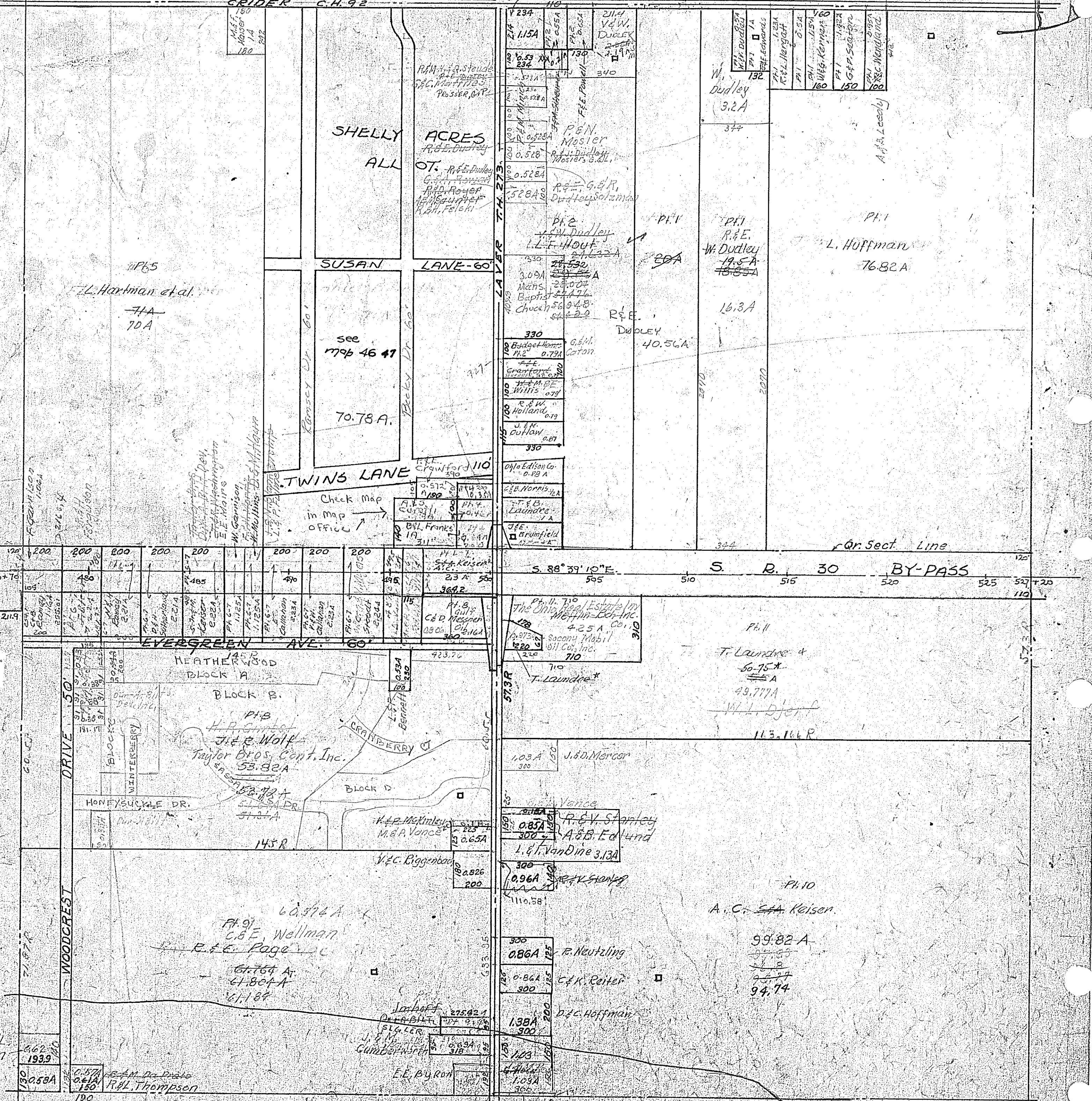


CRIDER C.H. 92

W. Harp & Sons, Inc.  
P.E. Bauman



SHELLY ACRES  
ALL OT.

SUSAN LANE-60'

TWINS LANE

EVERGREEN AVE. 60'

HEATHER WOOD BLOCK A

BLOCK B

BLOCK C

BLOCK D

HONEY SUCKLE DR.

WOODCREST DRIVE

CRANBERRY CT.

MADISON S.D.

60.974 A

61.764 A

61.804 A

61.184

see 1796 46 47

70.78 A

71A  
70A

71A  
70A

71A  
70A

71A  
70A

71A  
70A

71A  
70A

71A  
70A

71A  
70A

71A  
70A

2134  
1.15A

2114  
V.W. DUDLEY

PEN. Mosier

P.F. Dudley

P.F. Dudley

3.09A

Budget Homes

Grant

W. Williams

R. W. Holland

J. E. Outlaw

Ohio Edison Co.

E. B. Norris

T. E. B. Laundre

J. E. Brumfield

The Ohio Real Estate Co.

Sacoony Mobil Oil Co., Inc.

T. Laundre

J. D. Mercer

Vance

R. G. V. Stanley

A. B. Edlund

L. G. Vandine

W. Dudley 3.2A

3.7A

P.F. Dudley

W. Dudley 19.5A

16.3A

DUDLEY 40.56A

3.4A

3.4A

3.4A

3.4A

3.4A

3.4A

3.4A

3.4A

3.4A

3.4A

3.4A

3.4A

3.4A

3.4A

3.4A

3.4A

W. Dudley 3.2A

3.7A

P.F. Dudley

W. Dudley 19.5A

16.3A

DUDLEY 40.56A

3.4A

3.4A

3.4A

3.4A

3.4A

3.4A

3.4A

3.4A

3.4A

3.4A

3.4A

3.4A

3.4A

3.4A

3.4A

3.4A

W. Dudley 3.2A

3.7A

P.F. Dudley

W. Dudley 19.5A

16.3A

DUDLEY 40.56A

3.4A

3.4A

3.4A

3.4A

3.4A

3.4A

3.4A

3.4A

3.4A

3.4A

3.4A

3.4A

3.4A

3.4A

3.4A

3.4A

W. Dudley 3.2A

3.7A

P.F. Dudley

W. Dudley 19.5A

16.3A

DUDLEY 40.56A

3.4A

3.4A

3.4A

3.4A

3.4A

3.4A

3.4A

3.4A

3.4A

3.4A

3.4A

3.4A

3.4A

3.4A

3.4A

3.4A

W. Dudley 3.2A

3.7A

P.F. Dudley

W. Dudley 19.5A

16.3A

DUDLEY 40.56A

3.4A

3.4A

3.4A

3.4A

3.4A

3.4A

3.4A

3.4A

3.4A

3.4A

3.4A

3.4A

3.4A

3.4A

3.4A

3.4A

MIFFLIN TWP.  
SEC. 18

A.R. Packet 10-Folder 2

SEC. 18 - TWP. 23 - R. 17