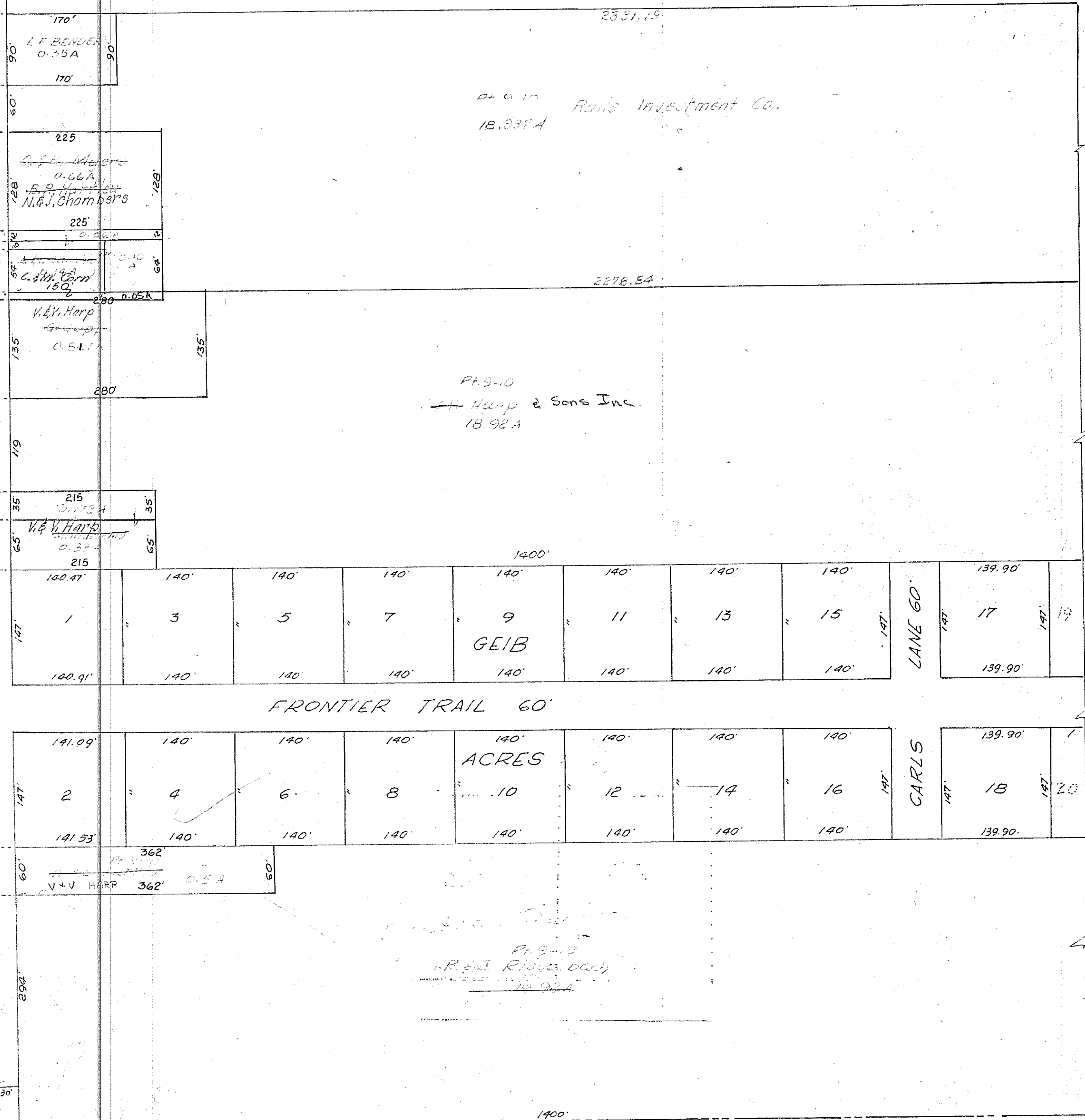


WEST LINE S.W. 1/4 SECTION 19  
T.H. 425  
FORD ROAD



Pl. 9-10  
Riotts Investment Co.  
18.937A

Pl. 9-10  
V. & V. Harp & Sons Inc.  
18.92A

GEIB

ACRES

SOUTH LINE S.W. 1/4, SEC. 19

MIFFLIN TOWNSHIP  
PART OF S.W. QUARTER SEC. 19.

T-23, R-17

MIFFLIN 19A