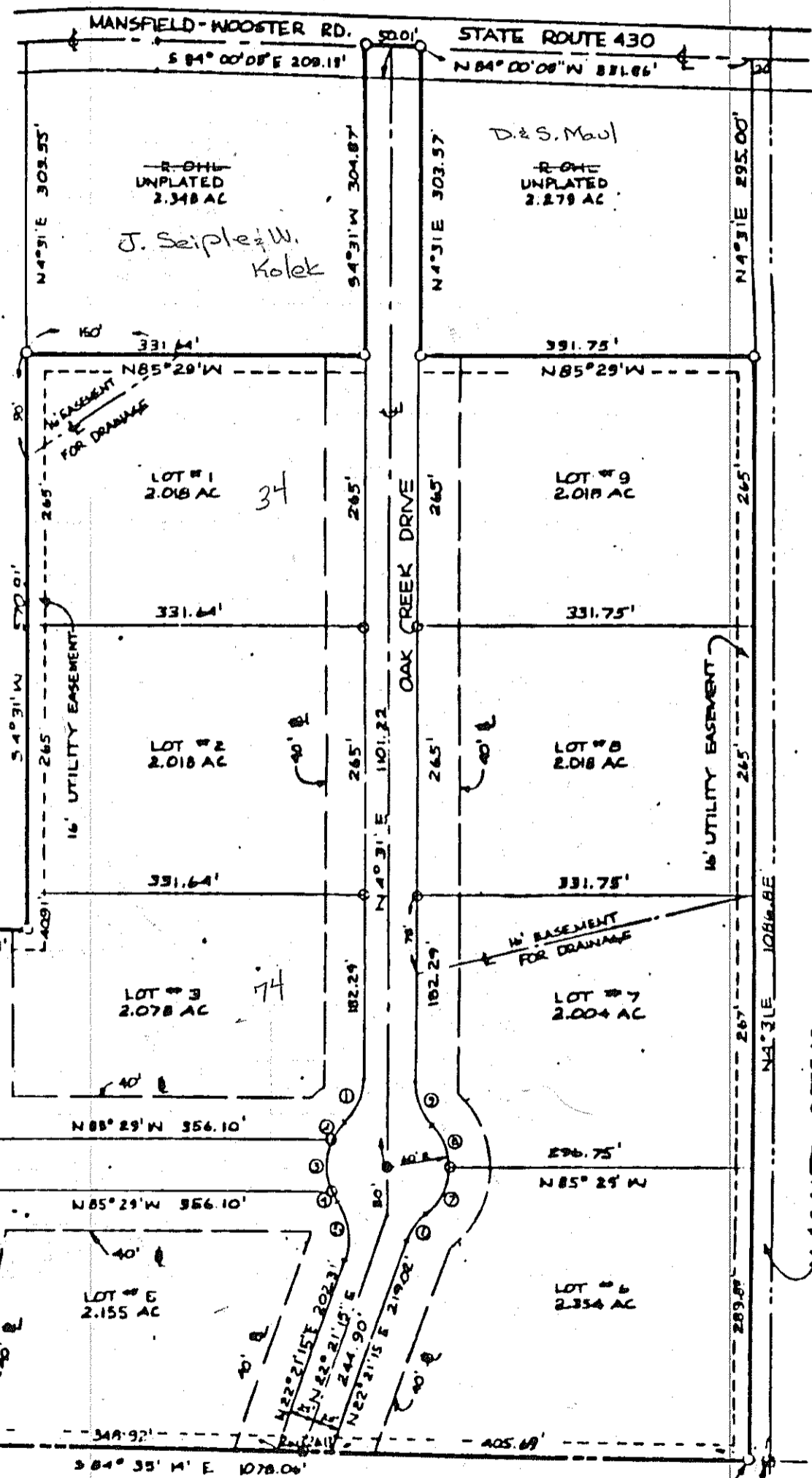


# OAK WOOD ESTATES

Curve Data  
 $\Delta = 17^\circ 38'$   
 $R = 1973.90'$   
 $LC = 121.40'$



A. H. GORTLE  
 12.85 AC

L. E. H. HARP  
 4.366 AC

M. C. LUTZ  
 0.578 AC

THE SOUTH LINE OF  
 THE NW 1/4 SEC. 21

THE PLACE OF  
 BEGINNING  
 THE SOUTHEAST CORNER  
 OF THE NW 1/4 SEC. 21

021-17-009-18-009

021-17-009-18-000