

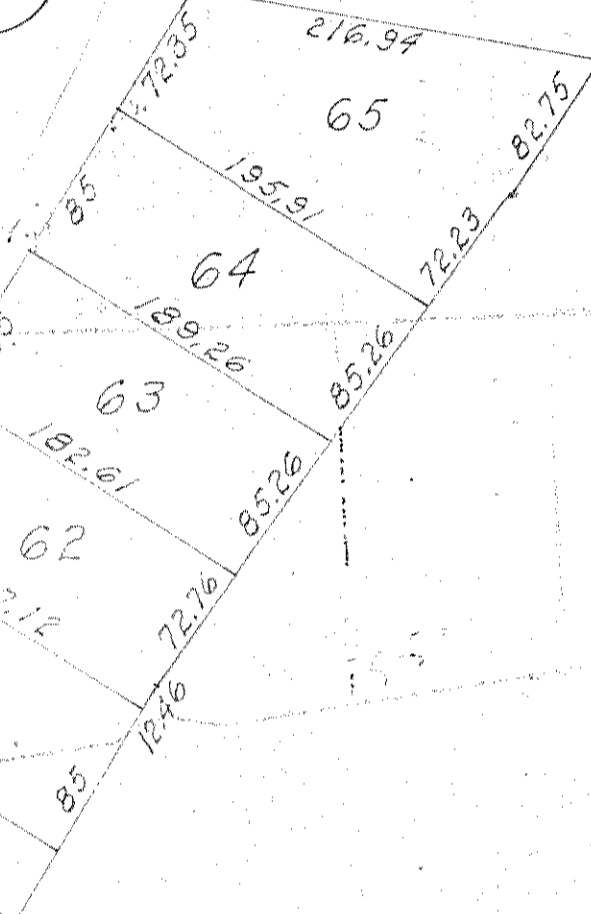
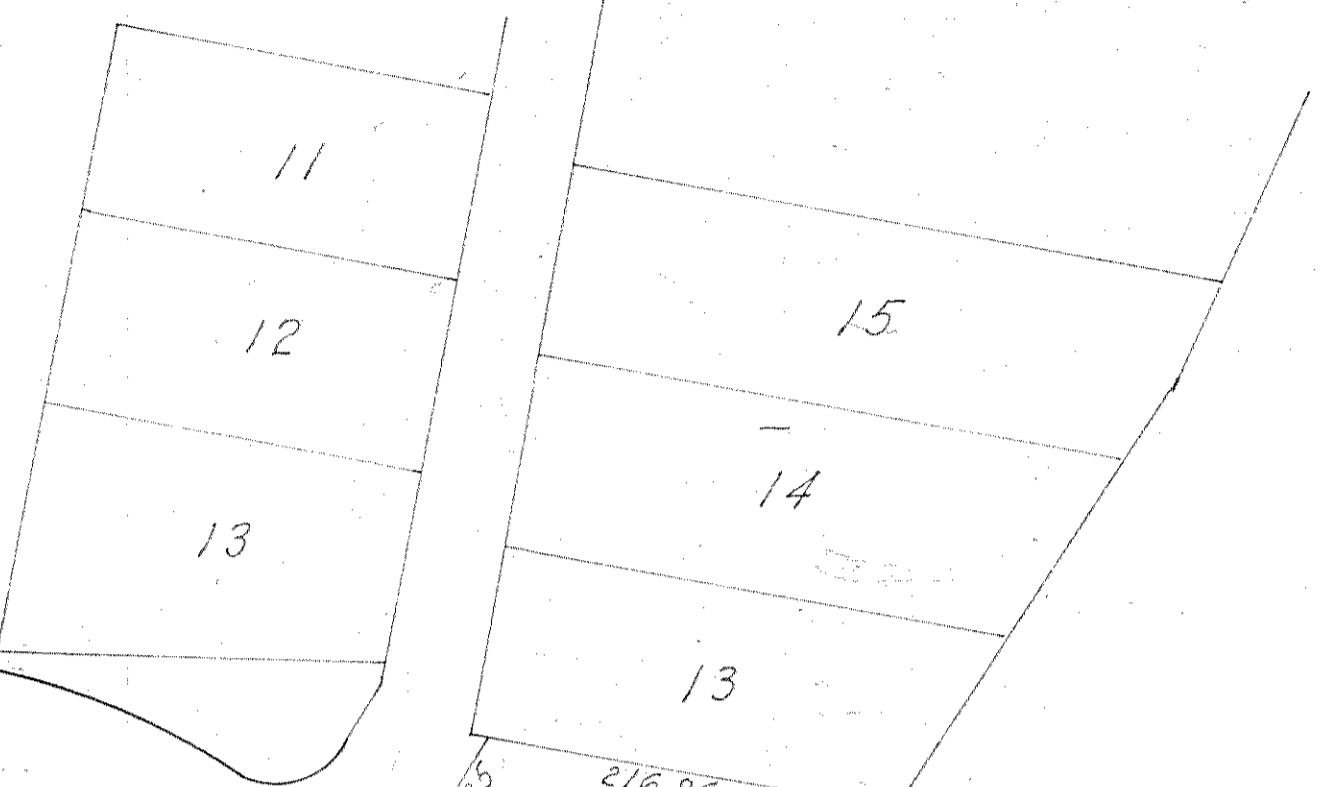
150	85	85	108.08
68	150	67	150
85	85	27.28	58.91
			156.18

WEDGE
~~REEDWOOD~~ DR. 60'

150	85	85	27.28	71.47
16	150	17	150	107.14
85	85	65.37	145.68	114.52
			194.66	538.54

150	85	85	27.28	71.47
16	150	17	150	107.14
85	85	65.37	145.68	114.52
			194.66	538.54
			140.24	60
			165.82	20
			169.7	21
			173.58	22
			177.46	23
			181.34	24
			185.22	25
			189.1	26
			192.98	27
			196.86	28
			200.74	29
			204.62	30
			208.5	31
			212.38	32
			216.26	33
			220.14	34
			224.02	35
			227.9	36
			231.78	37
			235.66	38
			239.54	39
			243.42	40
			247.3	41
			251.18	42
			255.06	43
			258.94	44
			262.82	45
			266.7	46
			270.58	47
			274.46	48
			278.34	49
			282.22	50
			286.1	51
			289.98	52
			293.86	53
			297.74	54
			301.62	55
			305.5	56
			309.38	57
			313.26	58
			317.14	59
			321.02	60
			324.9	61
			328.78	62
			332.66	63
			336.54	64
			340.42	65

BRYONAIRE



101. 23, P-115

3 Line SE of Sect. 17
T-23, R-17

IMPERIAL ESTATES NO. 4, BLOCK A
MUELLIN TWP. SE. OR. SECT. 17

59