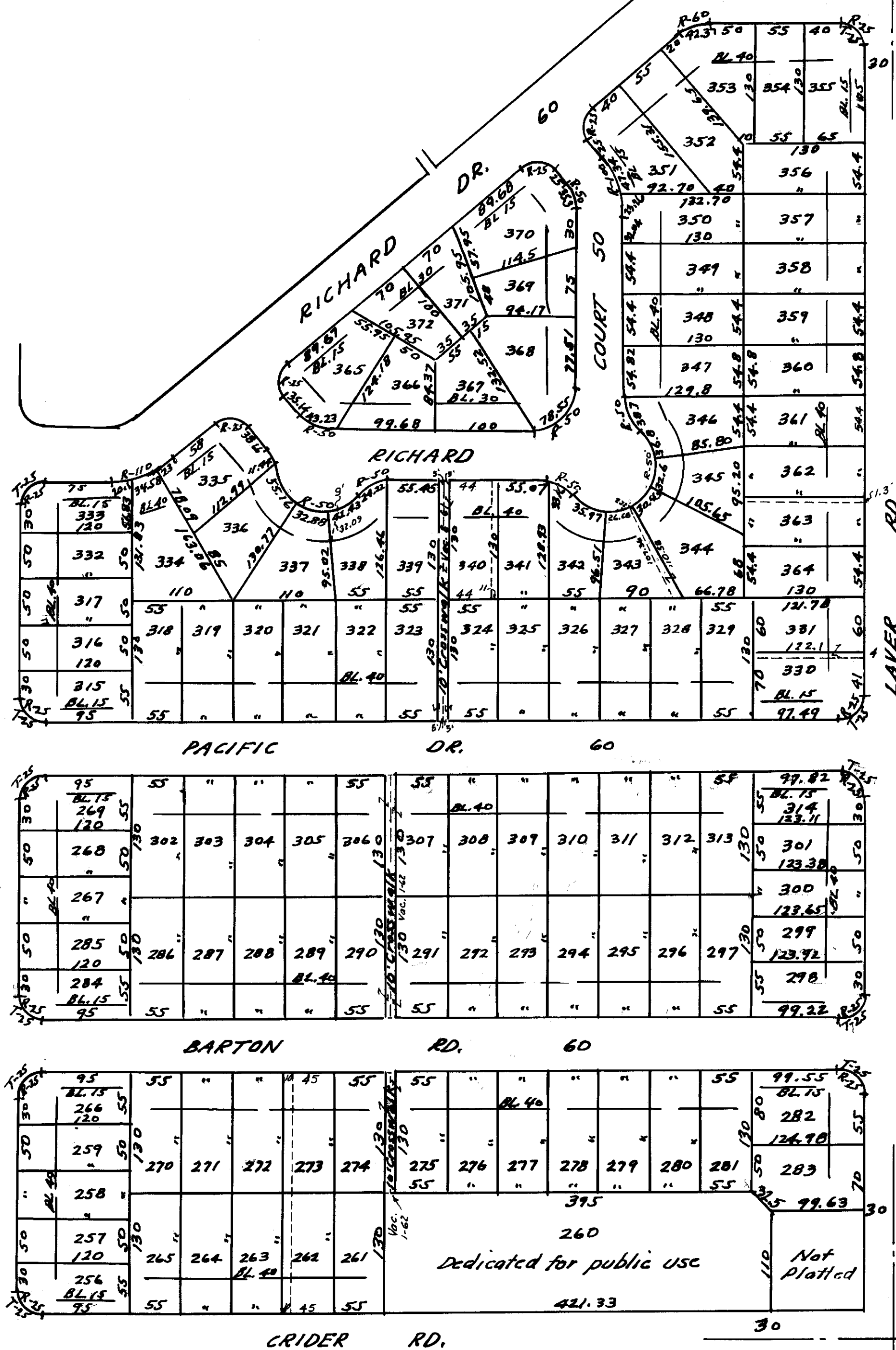


130	
55	413
"	"
"	421
"	"
"	420
"	"
55	419
130	"
65	418
BL 15	"
105	"

105	
BL 15	
417	
130	
60	416
"	"
60	415
"	"
70	414
BL 15	
130	

130	
BL 15	
411	
"	
60	253
130	
60	254
60	255
60	254
60	255
60	254
60	255



CRESTWOOD HILLS
 P. SW. 1/4, Sec. 7, Mifflin Twp.
 For details see Vol. 19 P. 92 Recorders Plats

