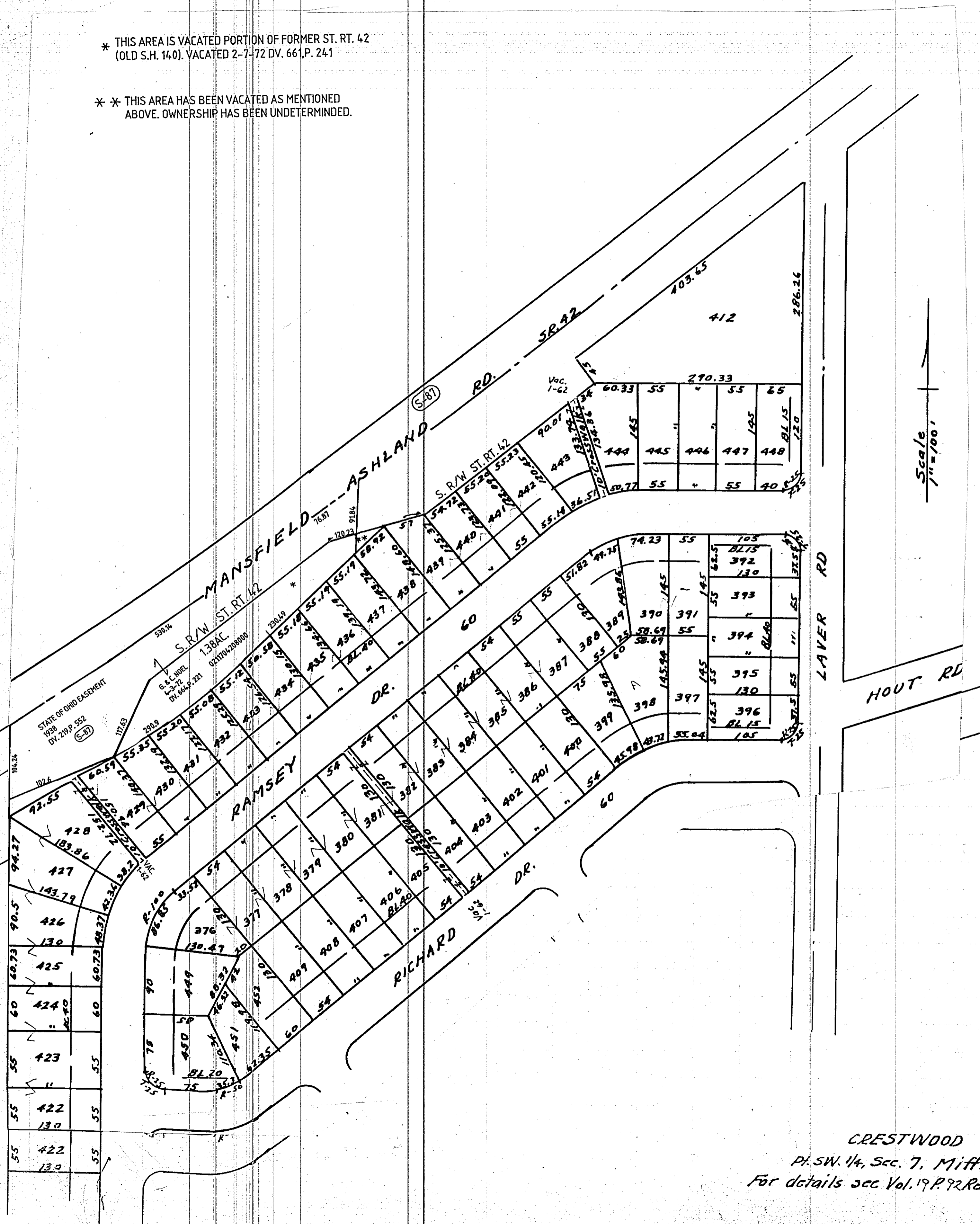


* THIS AREA IS VACATED PORTION OF FORMER ST. RT. 42
(OLD S.H. 140). VACATED 2-7-72 DV. 661, P. 241

* * THIS AREA HAS BEEN VACATED AS MENTIONED
ABOVE. OWNERSHIP HAS BEEN UNDETERMINED.



CRESTWOOD HILLS
P.S.W. 14, Sec. 7, Mifflin Twp.
For details see Vol. 19 P. 92 Recorders Plats

MIFFLIN TWP. ALLOTS