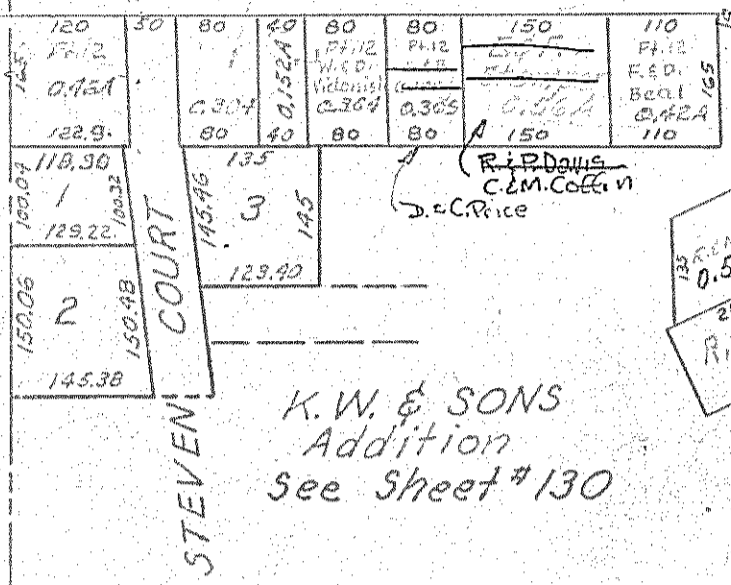


A.W. GILES

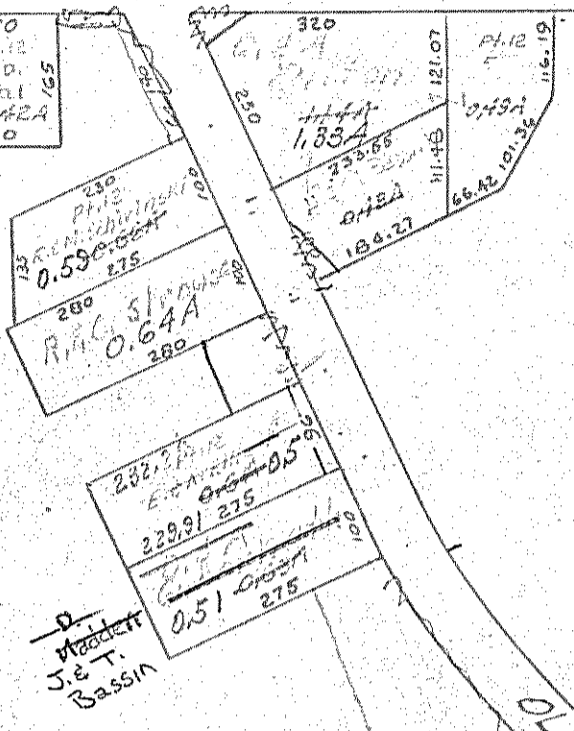
R.F.B. BOORS

NORTHLINE - SE. QR. SEC. 5

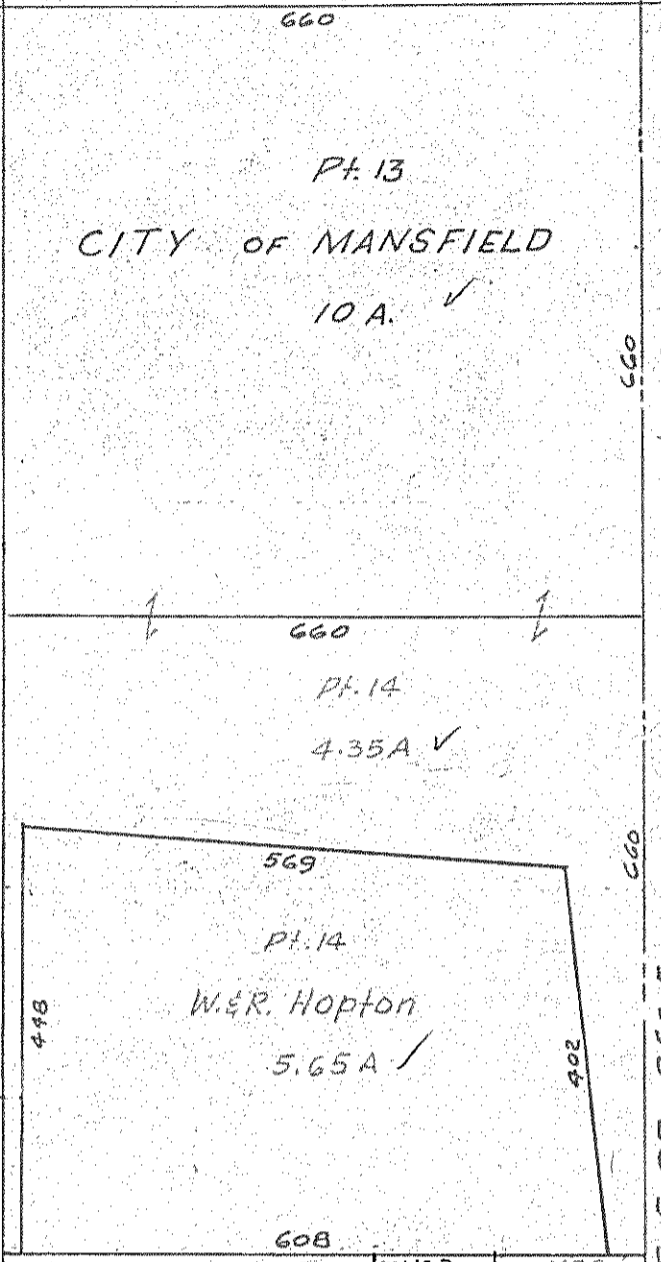
CAIRNS ROAD T.H. 203



K.W. & SONS Addition see sheet #130

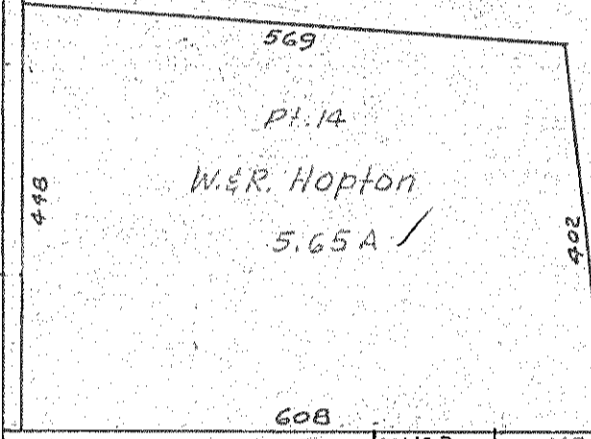


Pt. 12 A.G. Eyerly 19,29A



Pt. 13 CITY OF MANSFIELD 10 A.

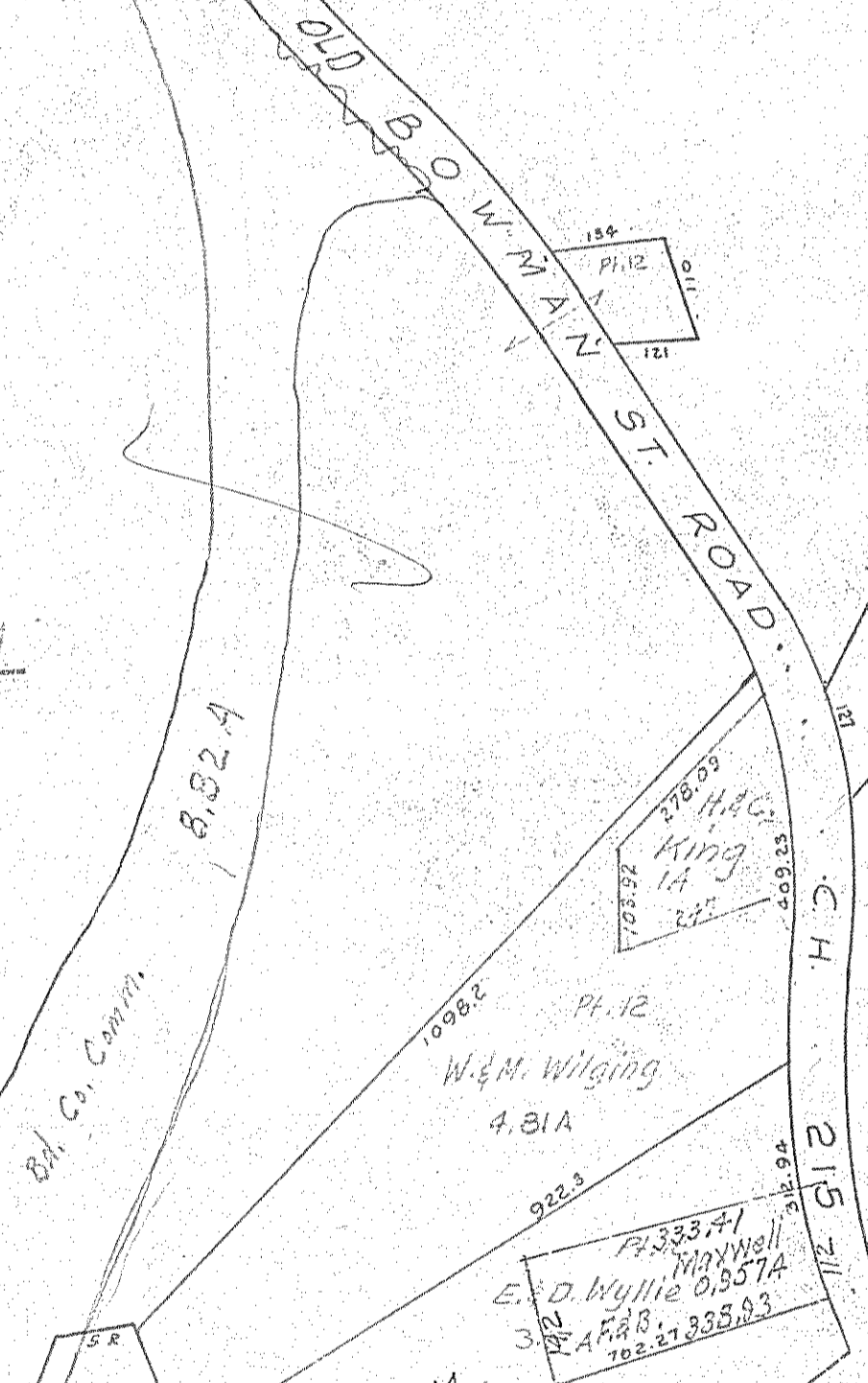
Pt. 14 4.35A



Pt. 14 W.R. Hopton 5.65A

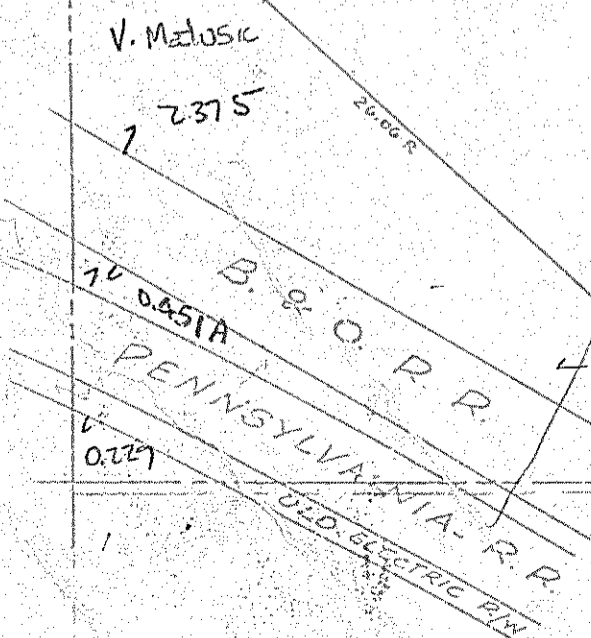
WESTLINE - SE. QR. SEC. 5

Pt. 12 K. Wilging Jr. 60.465A 51.645A



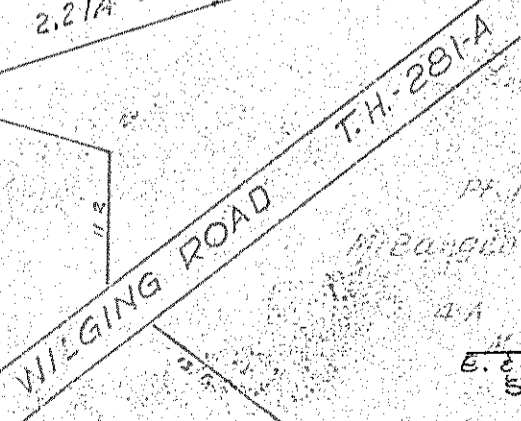
Pt. 12 W.M. Wilging 4.81A

Pt. 12 E.D. Wyllie 0.957A

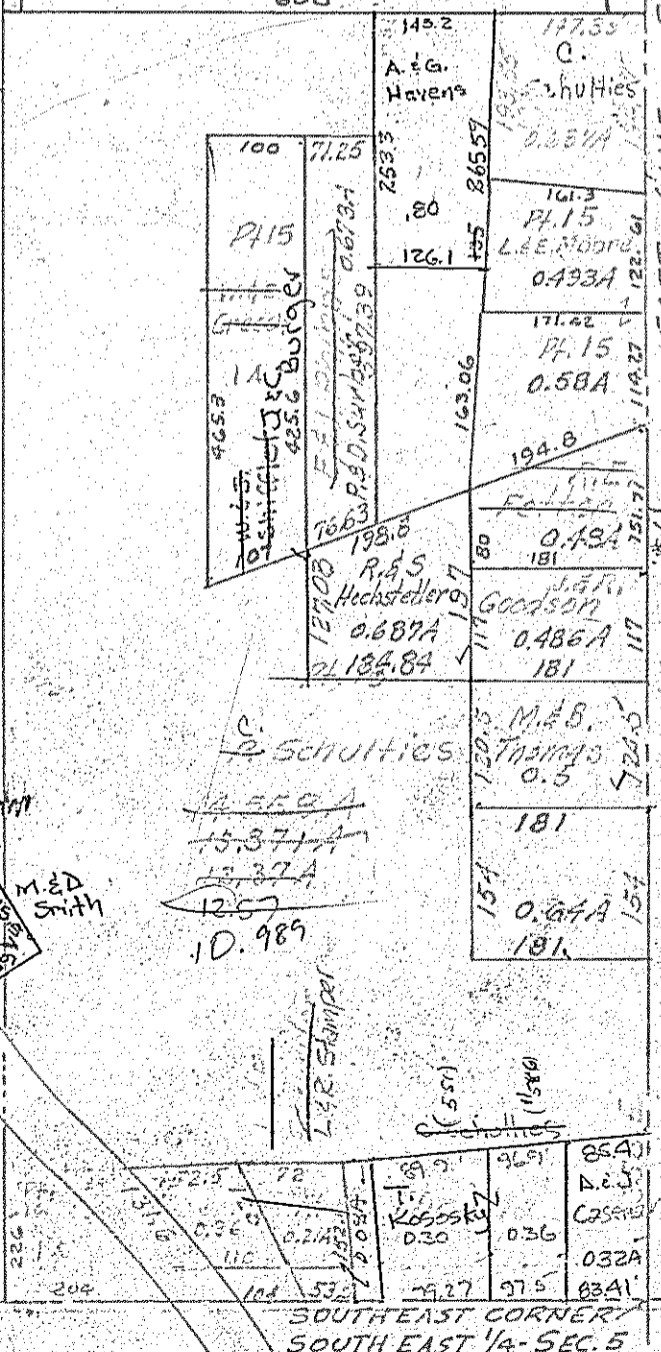


V. Matusek 2.375

Pt. 11 P. Schulties Jr. 9.225



E.O. Simmering



Pt. 15 1.125

Pt. 15 1.261

Pt. 15 1.18484

Pt. 15 1.267

Pt. 15 1.0.989

A.G. Haven 1.452

Pt. 15 L.E. Moore 0.493A

Pt. 15 1.17.22

Pt. 15 1.18484

Pt. 15 1.181

Pt. 15 1.181

Pt. 15 1.181

TWP 21 - R. 18

MADISON TWP SEC. 5A SOUTHEAST 1/4

EAST LINE - SE. QR. SEC. 5

SOUTHEAST CORNER SOUTH EAST 1/4 - SEC. 5