

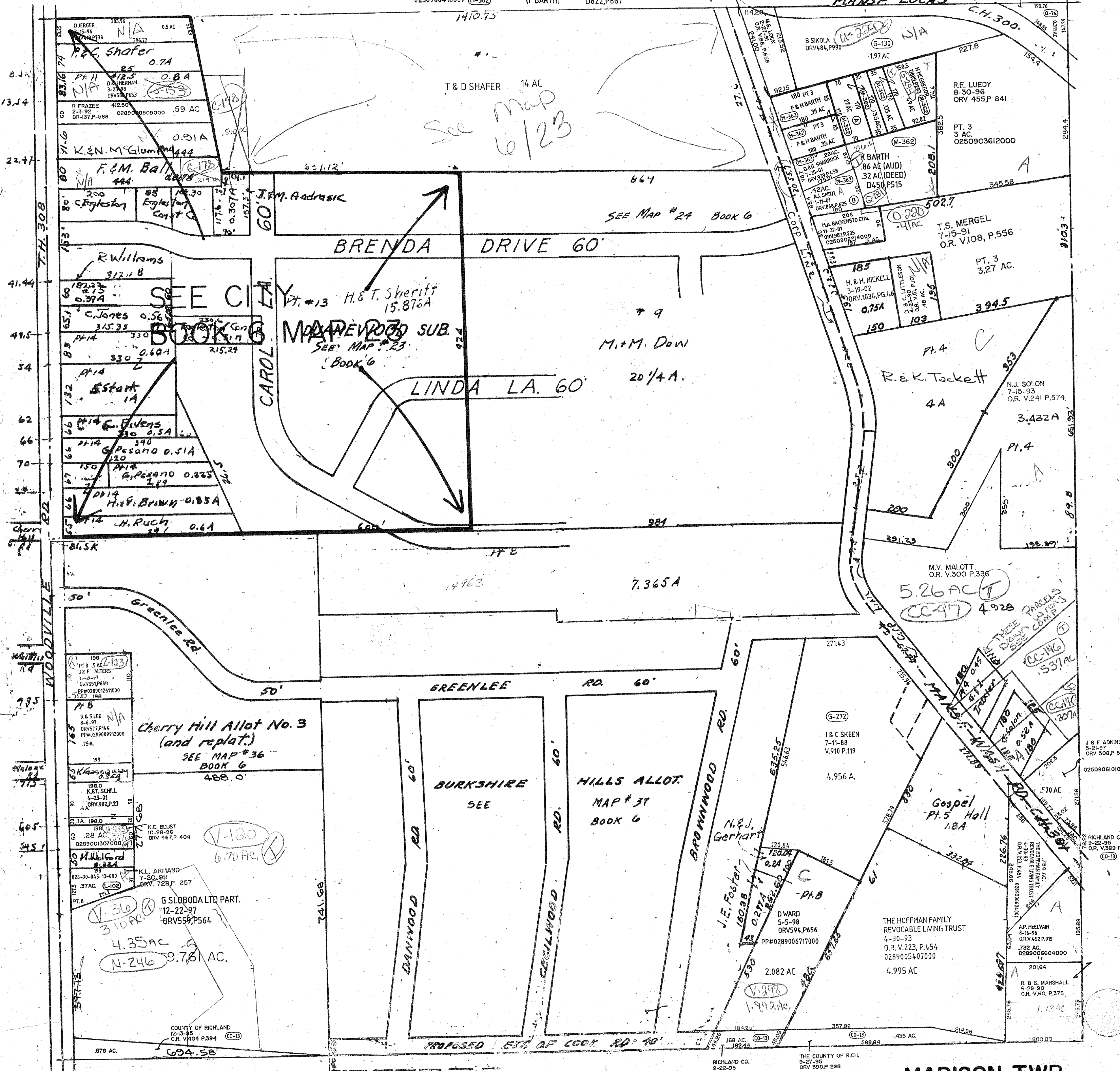
(B) A.J. SMITH
2-5-02
ORV.1018,P.342 1/4 INT.
.42AC.
0250900418001 (M-362)

(H MCGREGOR)
(M GIBSON)
(F BARTH)

(A) H MCGREGOR ETAL
7-17-00
ORV822,P15, ORV822,P12, D822,P667
ORV798,P96, ORV798,P94, ORV798,P92
D822,P667

M. & M. THOMAS
8-3-02
ORV.1093,P6.183

0250902505000



TWP.21 RNG.18
SCALE = 1" = 330/2 = 165'

MADISON TWP.
N.E. QTR. SEC. 34
8-15-02

RICHLAND CO.
9-22-95
ORV.393 P.238

J & F ADKINS
5-21-97
ORV.508 P.506
0250906101000
RICHLAND COUNTY
6-22-95
ORV.389 P.358
(C-13)

COUNTY OF RICHLAND
12-13-95
ORV.404 P.394 (C-13)

THE HOFFMAN FAMILY
REVOCABLE LIVING TRUST
4-30-93
ORV.223 P.454
0289005407000
4.995 AC

G SLOBODA LTD PART.
12-22-97
ORV559 P564

Cherry Hill Allot No. 3
(and replat.)
SEE MAP #36
BOOK 6
488.0'

BURKSHIRE
SEE

HILLS ALLOT
MAP # 37
BOOK 6

5.26 AC
CC-97
4.928

Gospel Pt. 5 Hall
1.8A

THE HOFFMAN FAMILY
REVOCABLE LIVING TRUST
4-30-93
ORV.223 P.454
0289005407000
4.995 AC

G SLOBODA LTD PART.
12-22-97
ORV559 P564

Cherry Hill Allot No. 3
(and replat.)
SEE MAP #36
BOOK 6
488.0'

BURKSHIRE
SEE

HILLS ALLOT
MAP # 37
BOOK 6

5.26 AC
CC-97
4.928

Gospel Pt. 5 Hall
1.8A

THE HOFFMAN FAMILY
REVOCABLE LIVING TRUST
4-30-93
ORV.223 P.454
0289005407000
4.995 AC