

R.E. TAYLOR
7-30-01
ORV.941,P.380
319AC. (D-1)

J. & V. GRIMM
4-10-01
ORV.896,P.375
0261100916000
1,6047AC.

R. & P. PHILLIPS
11-23-98
ORV.686,P.524
0261100115000

C.M. MOORE
11-30-00
ORV.858,P.190
306AC.

P.L. PHILLIPS
3-10-97
ORV.490,P.946
2572 AC. TOT.
0250907109000

C.M. MOORE
11-30-00
ORV.858,P.190
191 AC.

P.E. BALLITCH
9-2-98
ORV.631,P.197
63 AC.
0250902908002

C. PORTER
2-24-00
ORV.785,P.664

A. & M. KASH
DV. 419,P. 463
.49AC.

A. & M. KASH
3-15-84
DV. 846,P. 632
.229AC.

B. & E. HILL
4-12-01
ORV.897,P.423
0250902903000
1.0116AC. (M-409)

G. D. PRATT
6-24-02
ORV.1073,P.500
1.2700 AC

D. & J. PRATT
6-24-02
ORV.1073,P.498
0.4159 AC
(P-317)

C.L. ROBSON
OR. V.144, P.314
3-9-92 C

V.L. McClurg
9-3-91
OR. V.115, P.595

R. & F. GEMZER
10-9-90
OR. V.73, P.955

J. PETROFF
ORV.614,P.287

L.L. FUGIA
ORV.850,P.804

F.G. ROBERTSON
ORV.871,P.131

T.L. MESSER
10-17-91
ORV.871,P.131

A.H. HILL
ORV.871,P.131

H.A.H. HILL
ORV.871,P.131

H.A.H. HILL
ORV.871,P.131

H.A.H. HILL
ORV.871,P.131

H.A.H. HILL
ORV.871,P.131

H.A.H. HILL
ORV.871,P.131

H.A.H. HILL
ORV.871,P.131

H.A.H. HILL
ORV.871,P.131

H.A.H. HILL
ORV.871,P.131

H.A.H. HILL
ORV.871,P.131

H.A.H. HILL
ORV.871,P.131

H.A.H. HILL
ORV.871,P.131

H.A.H. HILL
ORV.871,P.131

H.A.H. HILL
ORV.871,P.131

H.A.H. HILL
ORV.871,P.131

H.A.H. HILL
ORV.871,P.131

H.A.H. HILL
ORV.871,P.131

AA-325
U-347
B.C. KNIPP
9-18-00
ORV.837,P.688

G.W. THOMPSON
OR. V.239 P.418

G.W. THOMPSON
OR. V.239 P.420

BB-20
1.068AC

1175
1115
905

1175
1115
905

1175
1115
905

1175
1115
905

1175
1115
905

1175
1115
905

1175
1115
905

1175
1115
905

1175
1115
905

1175
1115
905

1175
1115
905

1175
1115
905

1175
1115
905

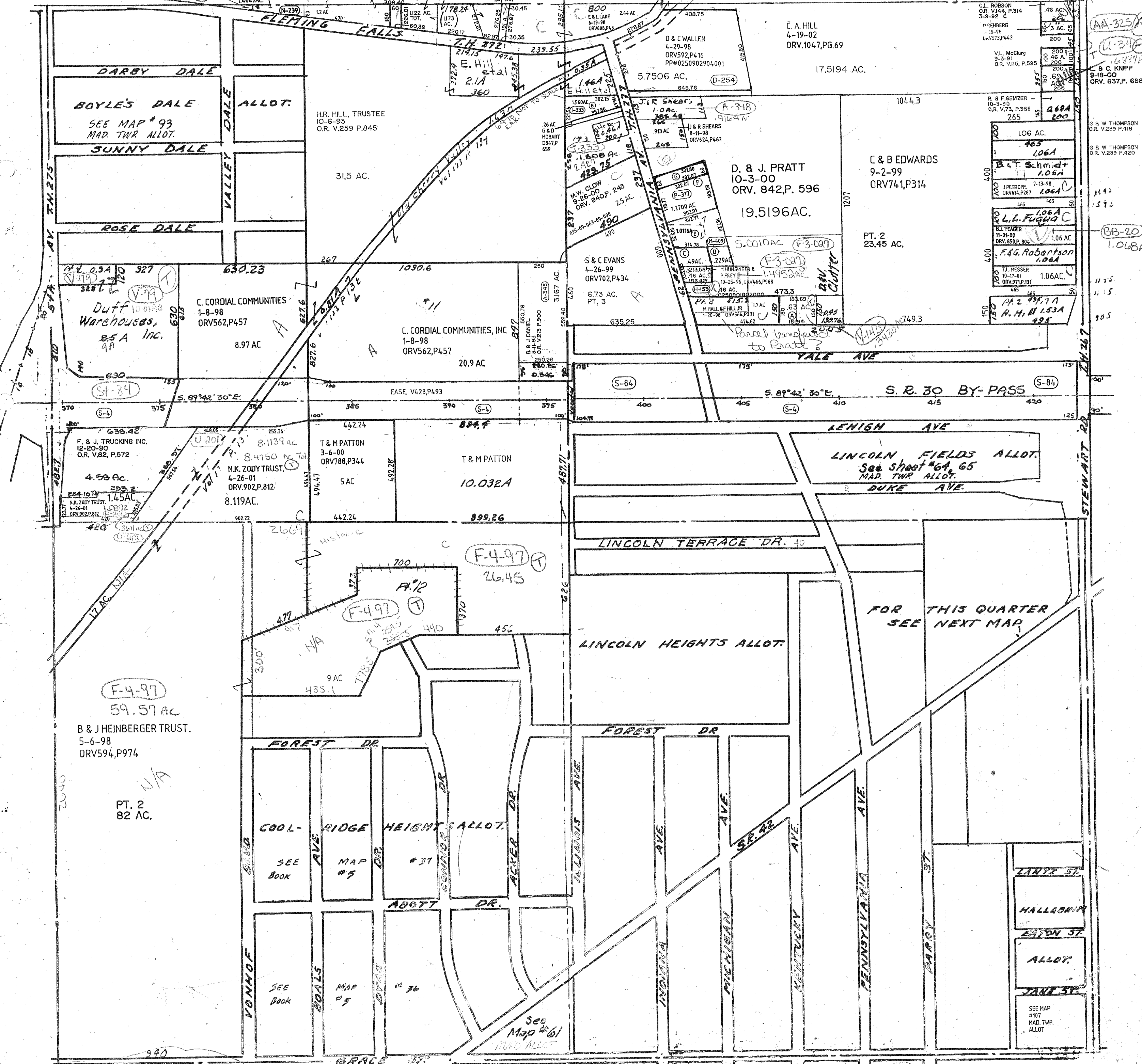
1175
1115
905

1175
1115
905

1175
1115
905

1175
1115
905

1175
1115
905



F-4-97
59.57 AC
B & J HEINBERGER TRUST.
5-6-98
ORV.594,P.974

PT. 2
82 AC.

COOL-RIDGE HEIGHTS ALLOT.
SEE MAP #5
ABOTT DR.

LINCOLN HEIGHTS ALLOT.

LINCOLN FIELDS ALLOT.
See sheet #64, 65
MAD. TWP ALLOT.
DUKE AVE.

FOR THIS QUARTER
SEE NEXT MAP

LANTANA ST.
HALLABRIN
EATON ST.
ALLOT.
JANU ST.
SEE MAP #107
MAD. TWP.
ALLOT