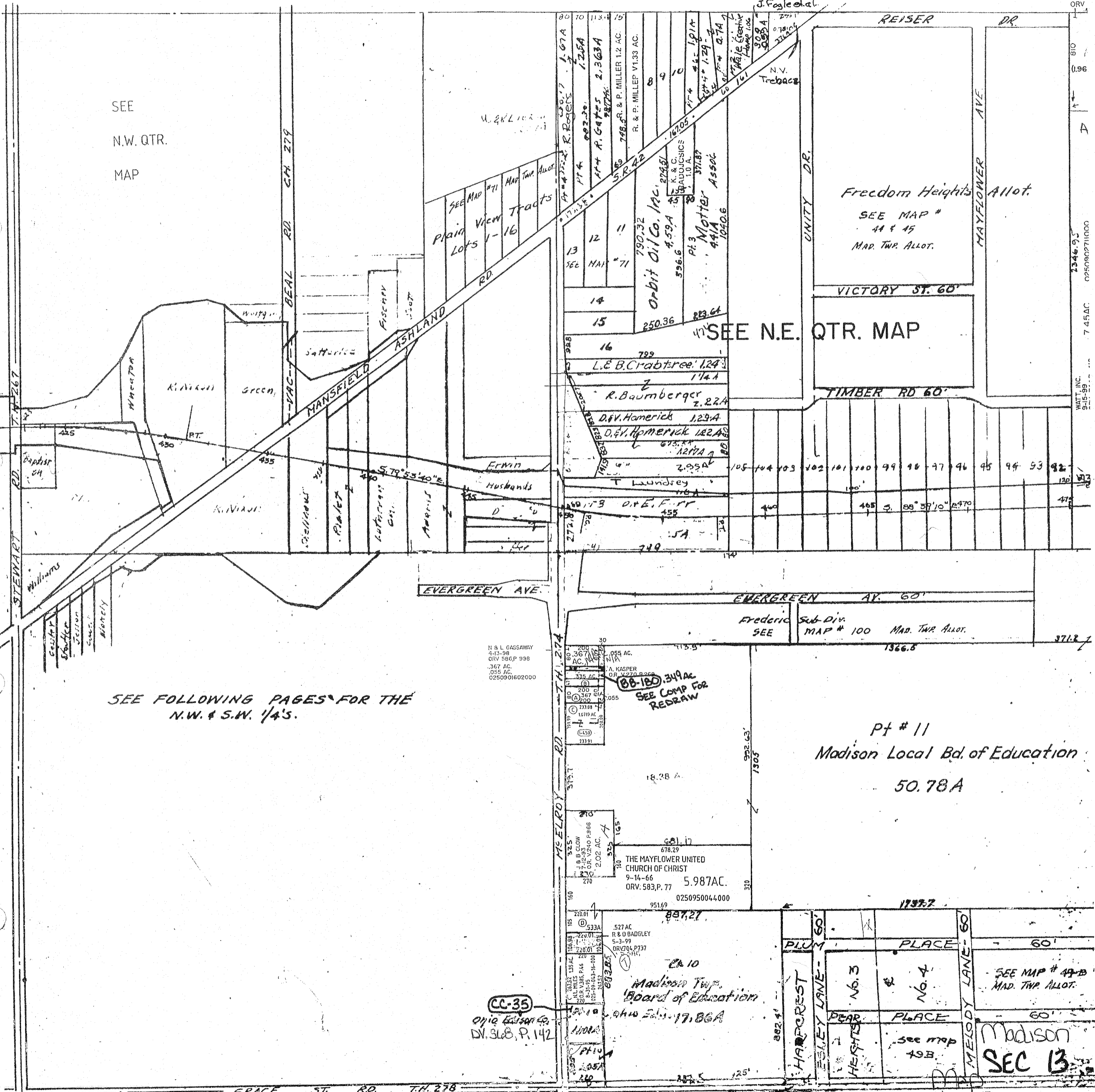


(1.96 AC.)  
11.85 AC. TOT.  
NORT  
HEAL  
FACIL  
1-30-  
ORV

SEE  
N.W. QTR.  
MAP



SEE FOLLOWING PAGES FOR THE  
N.W. & S.W. 1/4'S.

SEE N.E. QTR. MAP

Pt # 11  
Madison Local Bd. of Education  
50.78A

CC-35  
Opic Estor Co.  
DV. 318, P. 142

BB-180.349AC  
SEE COMP FOR  
REDRAW

Madison  
SEC 13

Updated on Computer  
11-16-06

TWP 21 RNG 18

- A. R. NIKOLAUS 10-13-06 ORV 642.P. 272 367 AC. 0250905417000 055 AC. 0250905417000.
- B. M. & K. PERRY 10-16-00 ORV. 846.P. 51 2154AC. (M-416)
- C. J. & A. HORNING 11-6-01 ORV. 979.P. 350
- D. MAYFLOWER UNITED CHURCH OF CHRIST 9-29-88 DV. 913.P. 452 533AC. 0250904315001