

HOME RD CORP LANE

Dedicated, Not opened

#4
Commissioners of Richland County
105 A

#3
M-L-K, Inc.
K. Thiem

#2
25 A

PAWNEE AV.

AV.

CALDWELL AV.

AV.

BROADVIEW

PARK ALLOT.

WYANDOTTE

AV.

WALKER

AV.

SEMINOLE

AV.

T.H. 164

#14

#16

TRIMBLE RD.

LANTE 2670 CH 455 40

DELPH AV.

CONCORD ST.

CITY #5A

CITY #15

B-L-K, Inc.

Map

Map

See

See

385

1732.5' LONGVIEW

CH 142

2689

Perfection Die Prod. Inc.
6.72 A
H.C. Wolf
J.A. Smith
22.41
20.18 A
56.25 A

#6

PH B-9
L. HETLER et al.

FOR THIS 1/4 SEE MAP FOR SE 1/4 SEC. 18

S. R. 30 BY-PASS

N. 87° 55' E.

EAST LINDAIRE LANE

B. CZAJKA
TRUSTEE

CH. 14
9.988 A
D. & D. Obrynska
63.5 A
730.75

L. HETLER et al.
103 A

54.012 A

PH B
1/2 A
Mansfield Asphalt Co.
21.5 A

RHODES HEIGHTS NORTH ADDITION
SEE MAP # 118

AURELIA AV.

J.A. Smith
29.12 A

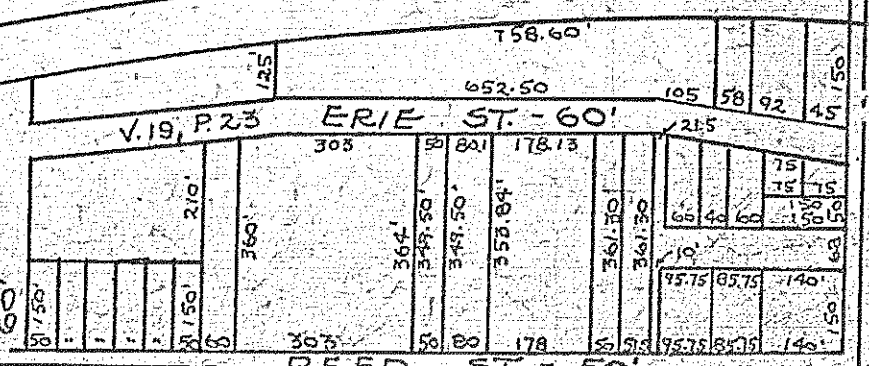
RHODES HEIGHTS ALLOT.
75

RHODES AV.

ONAWAY AV.

ERIE R.R.

PH B
P. Yohn et al.
12.851 A



SEC. 18 - Twp. 21 - R. 10.

MANSFIELD S.-D.

MADISON TWP SEC. 18