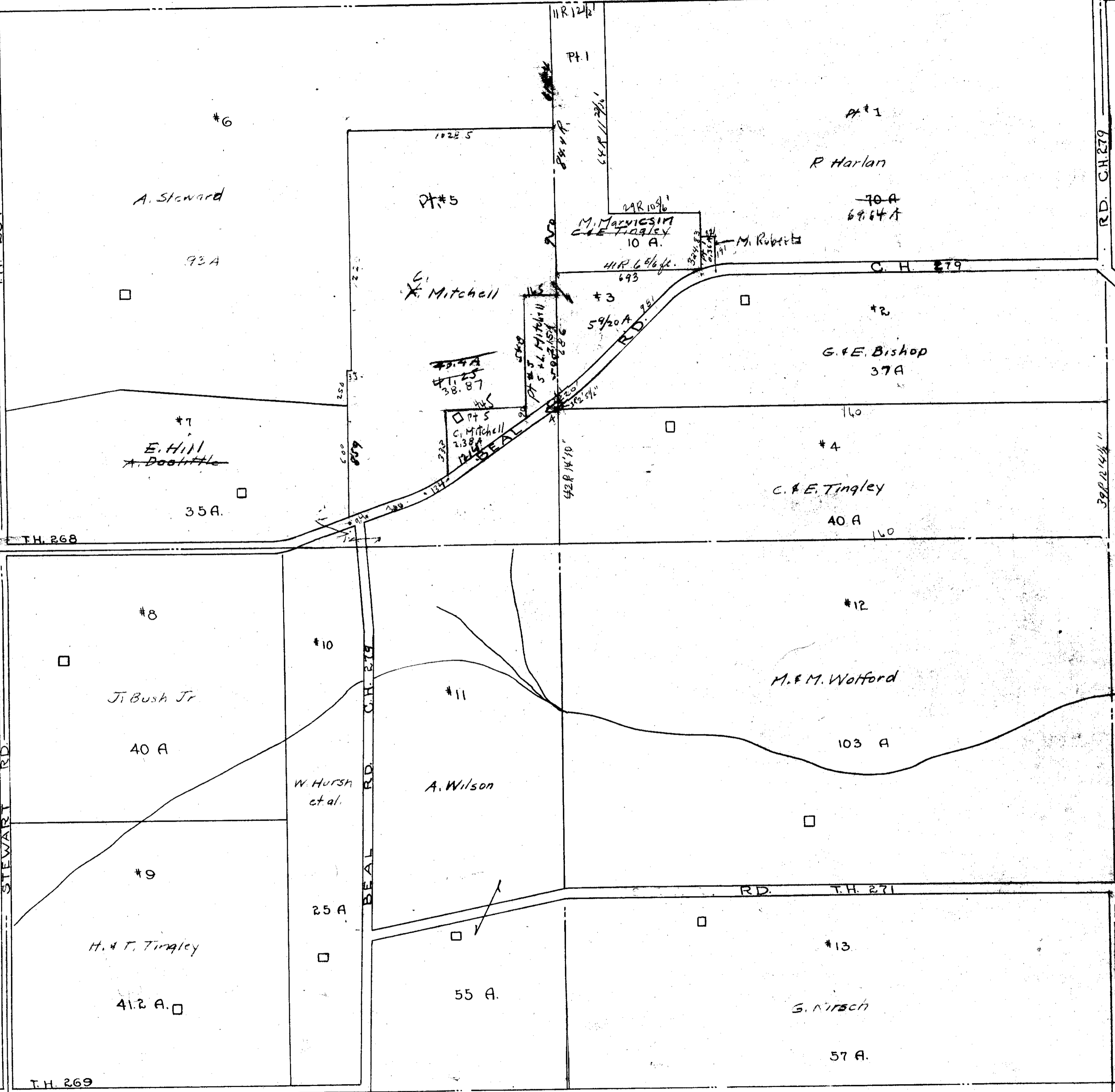


194-102

TH. 267

STEWART RD.

T.H. 269



Twp. 21 N. R. 18 Madison Sch. Dist

MADISON TWP.
SEC. 1

A.P. 5515 Pocket 10-Folder 1

950

12

RD. CH. 279

3982.44"

T.H. 268

T.H. 269

11 R. 12 1/2

Pt. 1

Pt. #1

Pt. #5

M. Marnicsin
C. E. Tingley
10 A.

70 A
69.64 A

G. Mitchell

41 R. 6 1/2 ft.
693

C. H. 279

#3
59/20 A

G. & E. Bishop
37 A

#7
E. Hill
A. Doolittle

#5
C. Mitchell
238 A

#4

C. & E. Tingley

40 A

#8

J. Bush Jr

40 A

#10

W. Hursh
et al.

25 A

#11

A. Wilson

55 A

#12

M. & M. Wolford

103 A

RD. T.H. 271

#9

H. & T. Tingley

41.2 A.

#13

G. Nirsch

57 A.