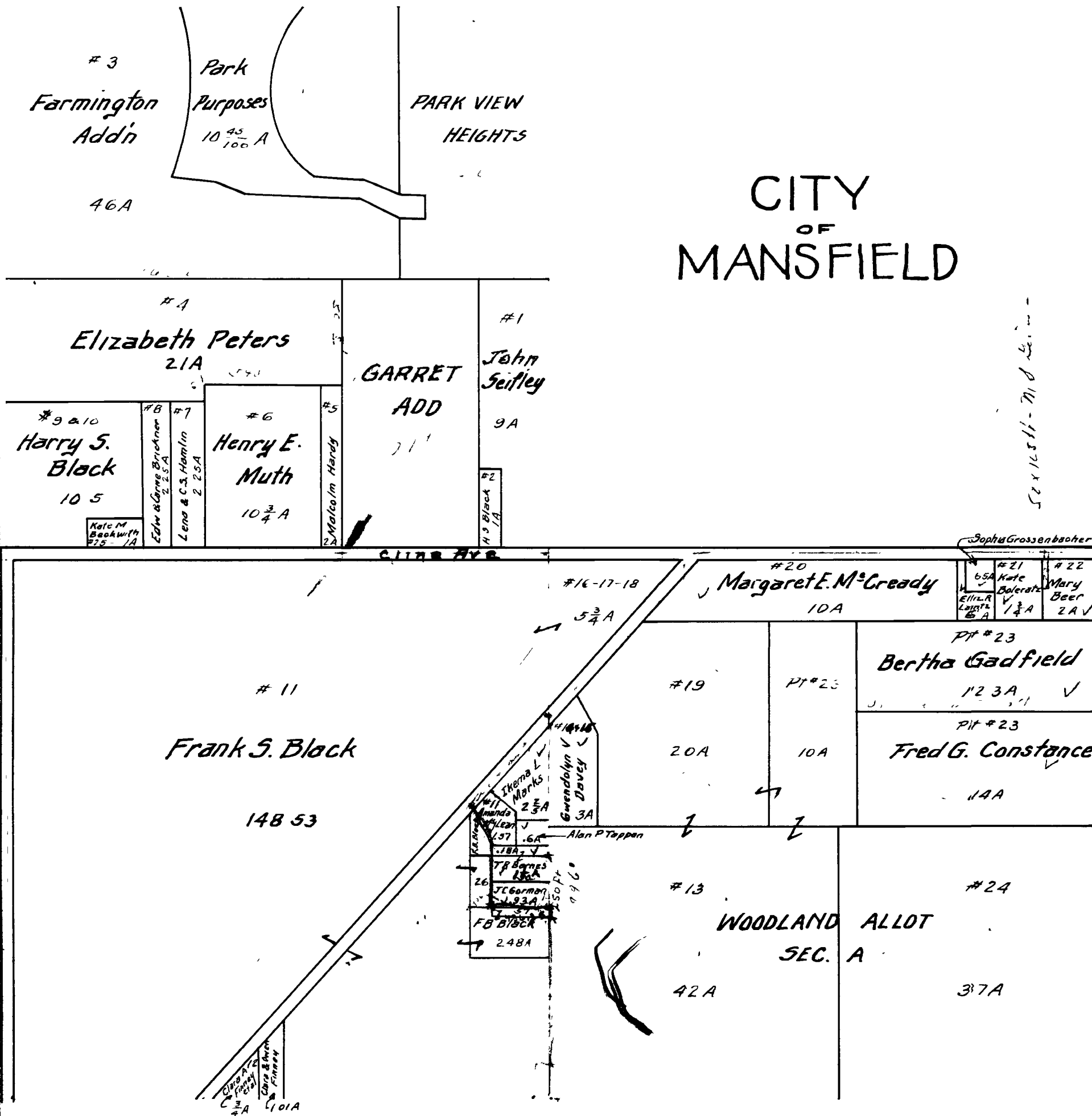


IN WHOSE NAME PROPERTY ASSESSED



CITY  
 OF  
 MANSFIELD

Sifley John  
 City, Mansfield  
 Black, Harry  
 Farming to addn  
 Peters, Elizabeth  
 Hardy, Malcolm  
 Muth, Henry E  
 Hamlin, O. H. & Lou  
 Brickner, Ed. & Carrie  
 Black, Harry  
 Park purposes  
 Park View Heights  
 Garret add.  
 Barnes J. R.  
 Barnes J. R.  
 Borman, J. C.  
 Black, Frank B.  
 Black, Frank B.  
 Jappan, Alan F.  
 Black, Frank B.  
 McLean, Amanda  
 Finney, Clara & O. M.  
 Finney, Clara & Etal  
 Markel, Irena S.  
 Davy, Gwendolyn  
 Woodland allot.  
 Black, Frank B.  
 M. Cready, Marg E  
 Woodland allot  
 Grossenbacher, Sophia  
 Sautz, Elizabeth R.  
 Rohratz, Kate  
 Beers, Mary  
 Gadfield, Bertha  
 Constance, Fred  
 Beckwith Kate M

102  
 102  
 102  
 102  
 102