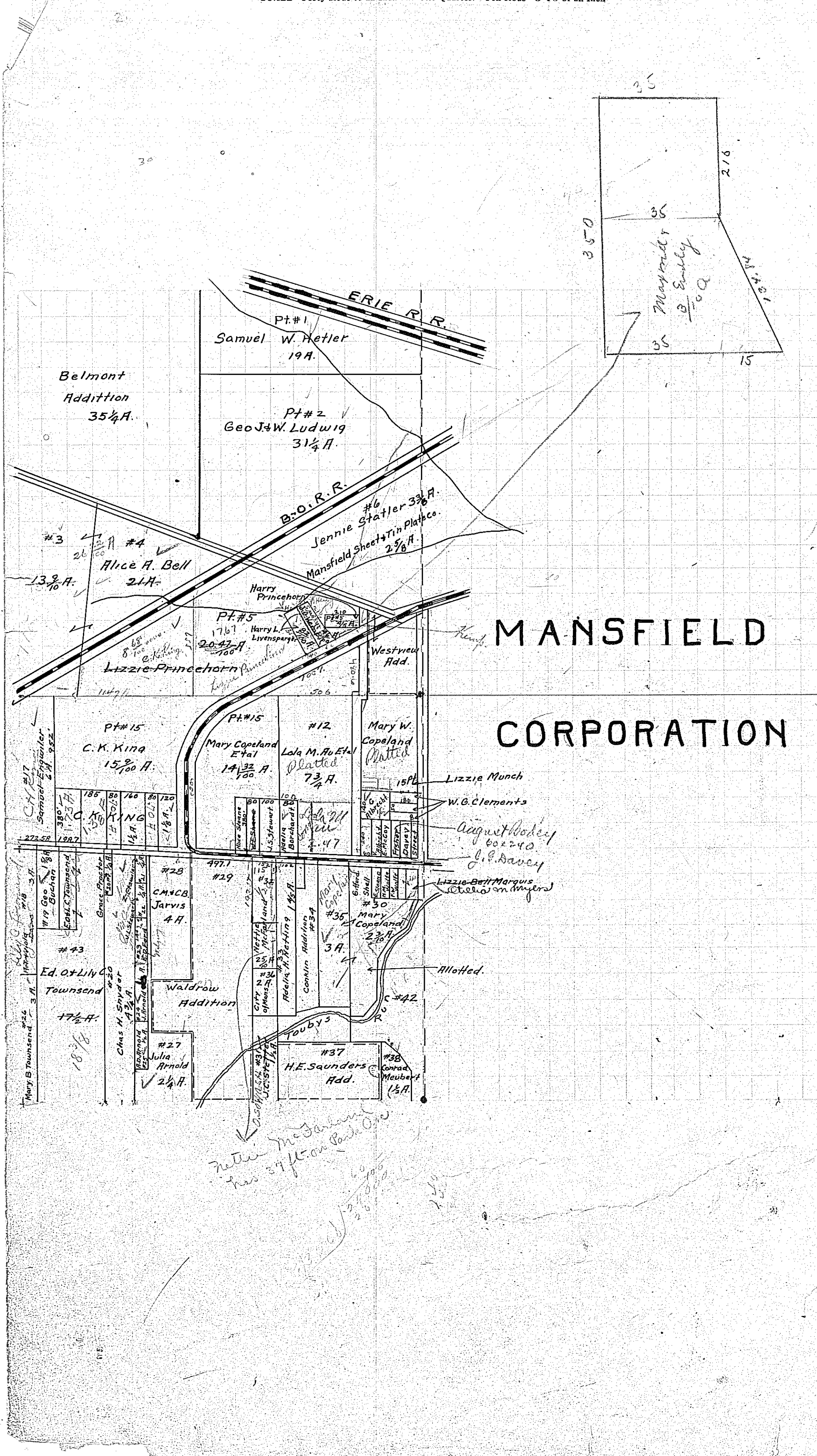


IN WHOSE NAME PROPERTY ASSESSED



- Arnold Albert D.
- Arnold Julia
- Arnold Julia
- Air Lola M Etal
- Albrecht Geo G
- Bell Alice A
- Borchardt Adelia
- Brack H.P. & Ruth L.
- Buchan George
- Copeland Mary W.
- Copeland Mary W Etal
- Copeland Mary W Etal
- Davis A. F. & Viola
- Davey James G.
- Engwiler Samuel
- Etzwiler Zola
- Fisher Edna B.
- Ford Edwin D.
- Fraser Maria
- Gifford William H.
- Hettler Samuel W.
- Jarvis Chas M & E. B.
- King C. K.
- King Chas K.
- King C. K.
- King Chas K.
- King Chas K.
- Kemp Jas O.
- Livensparger Harry L.
- Ludwig Geo J & W.
- Marquis Lizzie Belle
- Marquis Lizzie Belle
- M<sup>rs</sup> Connell Myrtle F.
- M<sup>rs</sup> Loy Ella L.
- M<sup>rs</sup> Farland Nettie
- Netting Adelia F.
- Neubert Conrad
- Princehorn Harry L.
- Princehorn Lizzie
- Proctor Grace L.
- Redding Vernon Trust
- Clements William G.
- Clements William G.
- Clements William G.
- Munch Lizzie