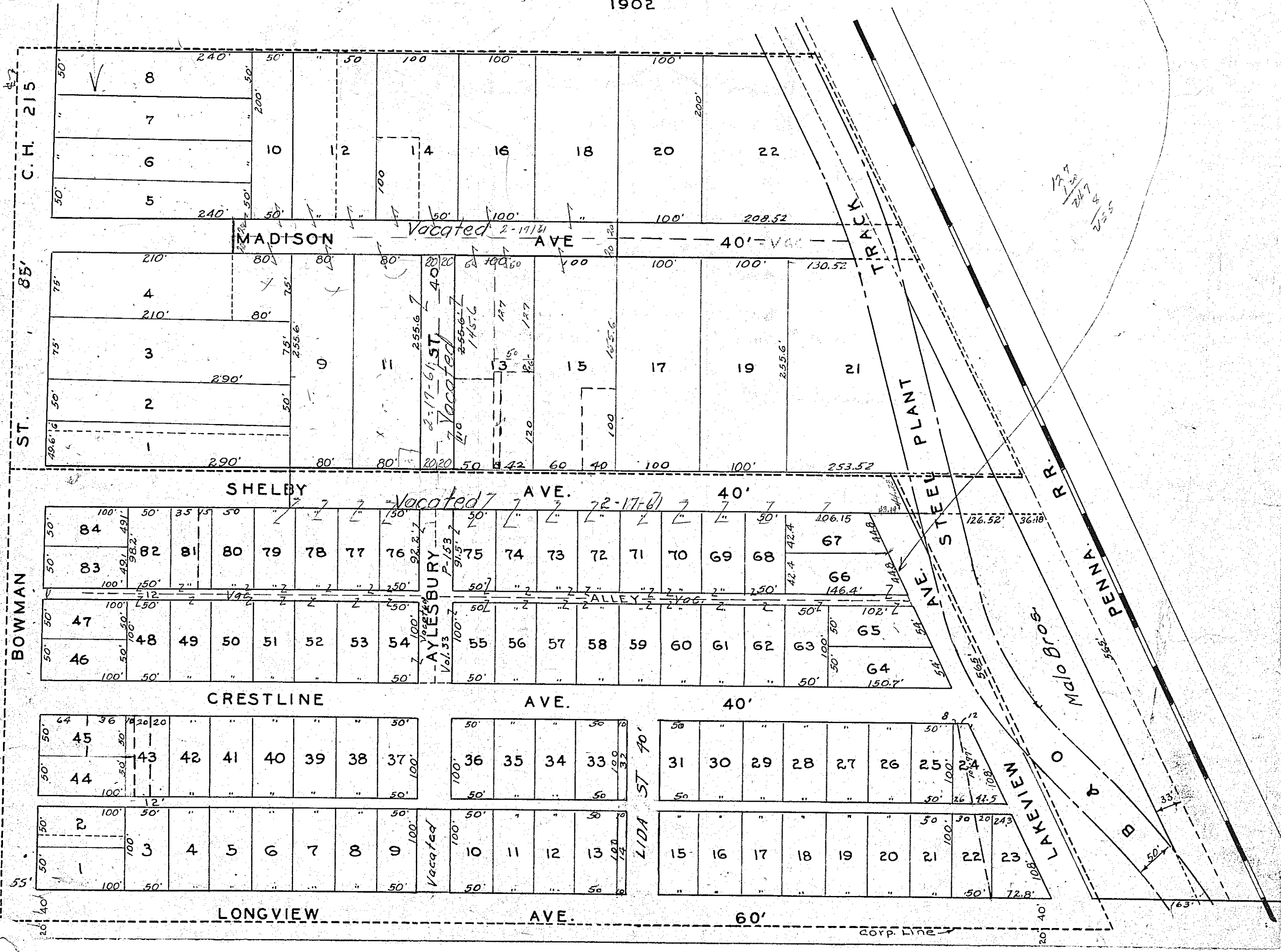


BOWMAN HEIGHTS NO.1 & LONGVIEW TERRACE

Vol. 8 Pg. 19-20

Vol. 8 Pg. 12

Pts. NE 1/4 Sec. 16
1902



$\frac{127}{247} = .514$
 $\frac{247}{494} = .5$
 $\frac{494}{988} = .5$

corp. line