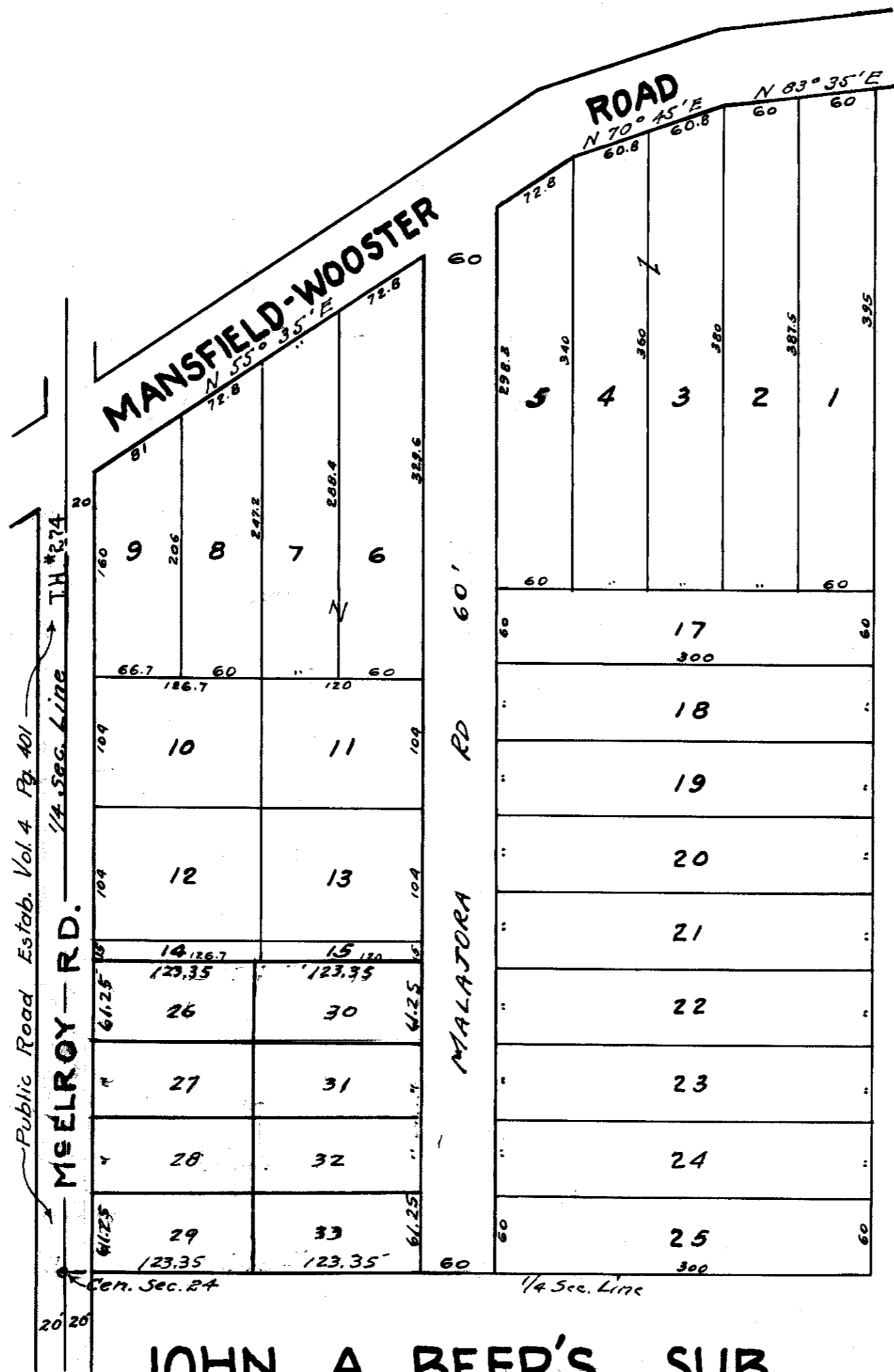
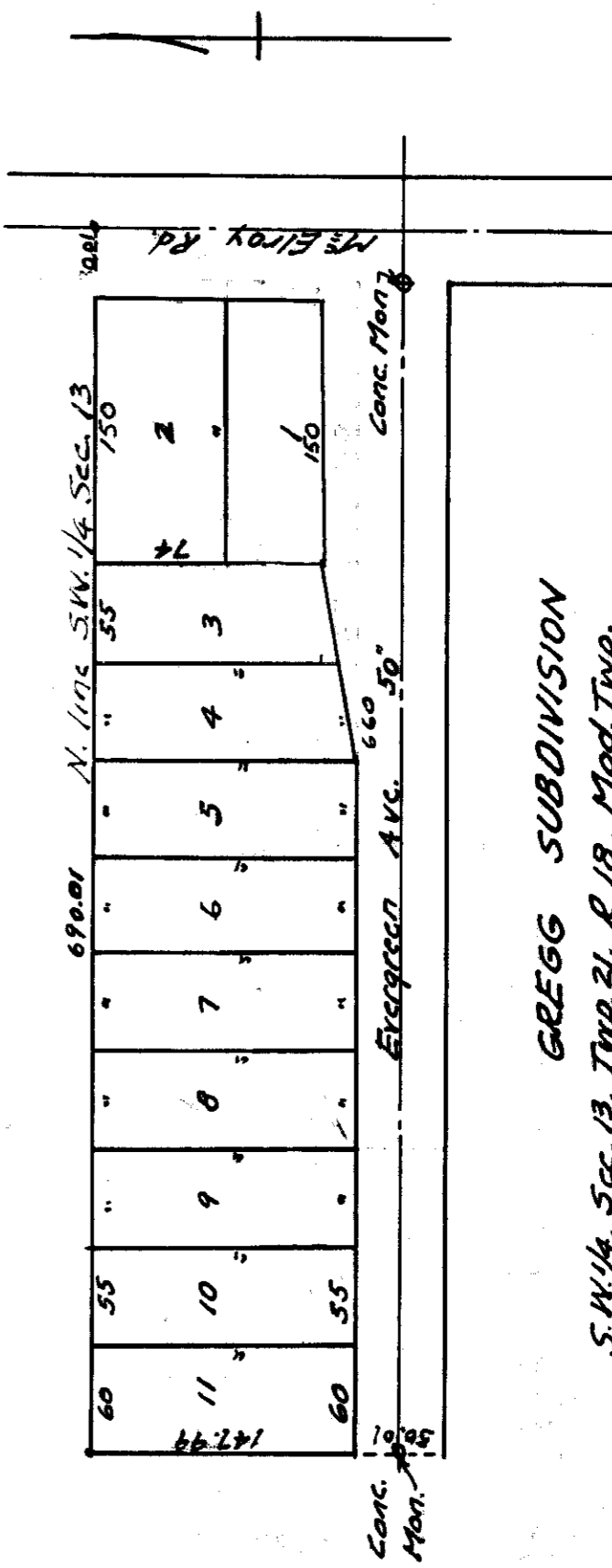


GOTTIER S.D.  
 Lots No. 26 to 33 inc.  
 Vol. 18, Page 28



**JOHN A. BEER'S SUB.**

N.E. 1/4 SEC. 24  
 Vol. 14 ~ Page 9.  
 1928



GREGG SUBDIVISION  
 S. W. 1/4, Sec. 13, Twp. 21, R. 18, Mod. Twp.  
 Vol. 16, P. 19