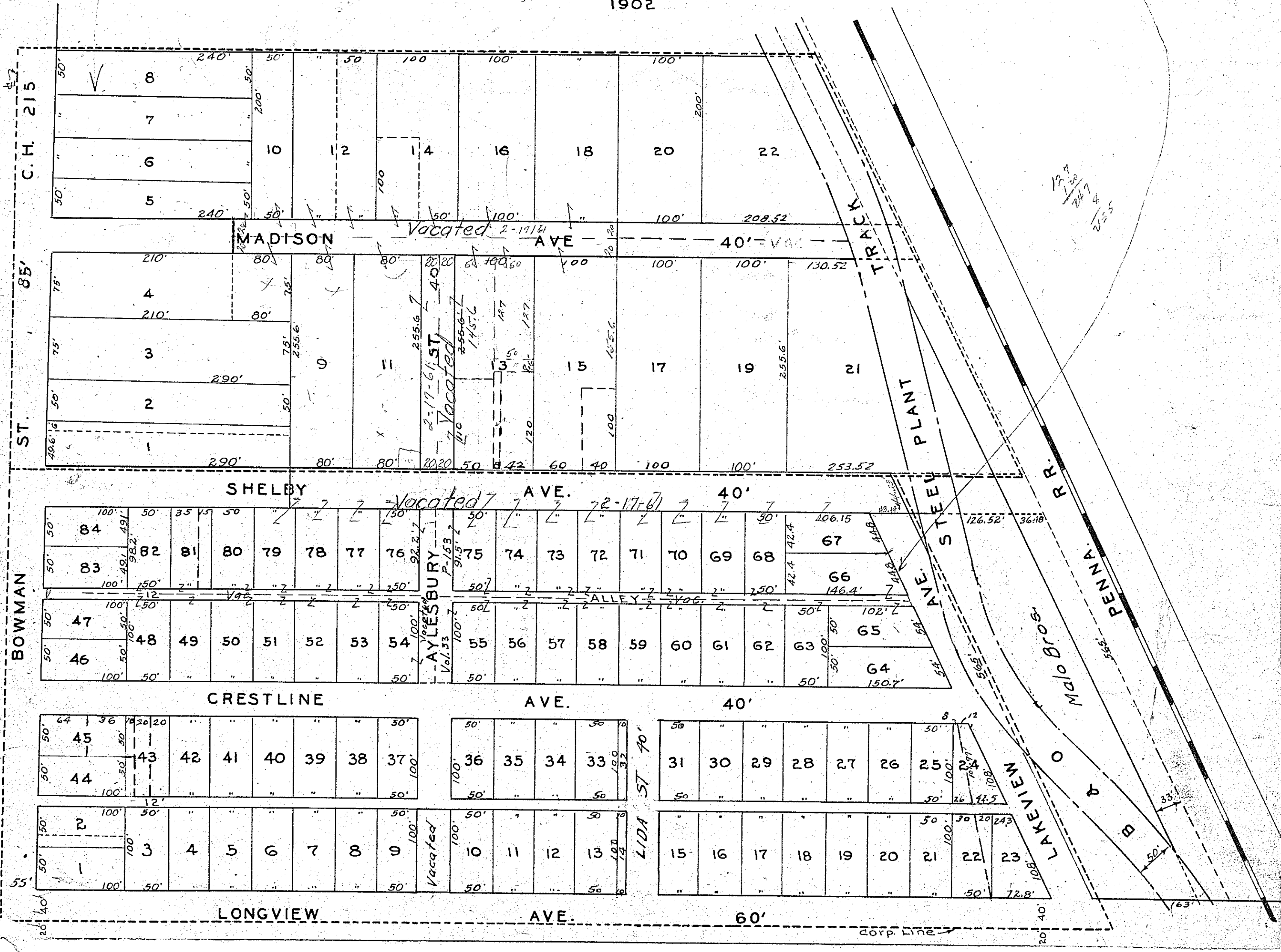


BOWMAN HEIGHTS NO.1 & LONGVIEW TERRACE

Vol. 8 Pg. 19-20

Vol. 8 Pg. 12

Pts. NE 1/4 Sec. 16
1902



$\frac{127}{22}$
 $\frac{247}{8}$
 $\frac{255}{2}$

LIDA ST 70'

corp. line