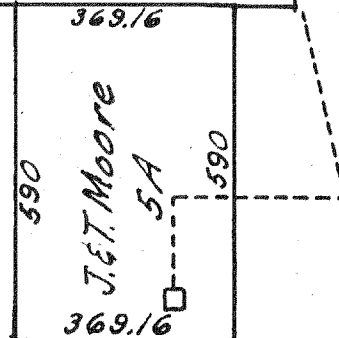


WAGNER RD. T.H. 394

80R

257.59

369.16



CH 116
 Pt. # 4
 D. & P. Greer
 M-147
 20.54
 200' 8 1/2"

200' 460'
 E. & V. FRALEY
 1-21-93
 3.0 AC.
 D.R. V. 206, P. 242
 0143405105001
 0143404792009
 200' 48"
 F & C MITCHELL
 3-27-97
 ORV 495, P. 166
 PT. 5
 5.166 AC.
 0143405105001 (G-108)
 660.50
 1003.66
 1003.66
 1341.27
 1341.27
 PT. 5
 5.944 AC.
 0143405105002 (G-108)
 640
 640
 700
 PT. 5
 6.817 AC.
 0143405105003 (G-108)

5.078 (G-108)
 C. E. MYERS
 4-27-95
 D.R. V. 360, P. 889
 0143405104000
 35.433 AC.
 6.928 (G-108)

41.4 AC TOTAL
 (24.648)
 (G-195)

660.00 (3.512 AC) (G-7)
 10.0 AC TOTAL (G-8)
 660.00 (6.488 AC) (G-7)
 Ad-71
 N & L BROWN
 1-19-92
 ORV 417, P. 228 (G-8)
 660.00
 16.751
 Pt 6

Pt. # 8
 M. & R. HAMILTON
 4-3-02
 ORV. 1040, PG. 242
 014340180900
 59.44

264
 825
 D. M. CRAWFORD
 1-23-98
 5 AC.
 ORV 562, P. 180
 0143403513000
 264
 41.6 A.
 Pt # 10
 0143401808000

PT. 3
 80 AC.
 0143403712000
 M & P PATTERSON
 9-1-98
 ORV 631, P. 26
 106 AC. (BY DEED)

PT. 7
 26.5 AC.
 0143403710000

Pt. # 1
 D & B Pummer
 145 A

Pt. # 2
 10 A.

Pt. # 11

Pt. # 12

E & L. Littleton

C. E. Grimwood

(G-134)
 13.44 AC.

80 A

80 A.

ANKNEYTOWN RD.

MISHEY ROAD T.H. 393

JEFFERSON TWP.
 SEC. 27

J OCHELTREE
 5-9-00
 ORV 804, P. 884

Twp. 19-R. 18

5-16-02

