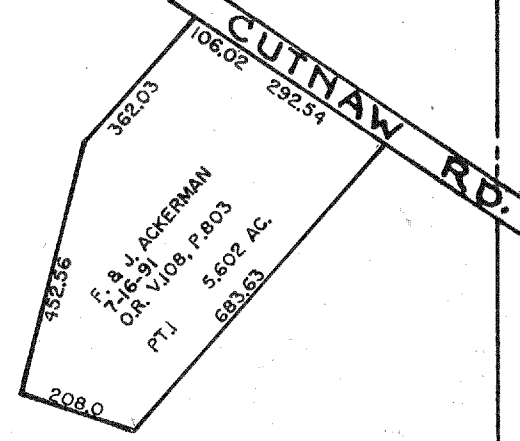


Z-24  
19.617 AC.

Pt. #3  
V.R. Wade  
115 A

F & M SWANK  
3-16-98  
ORV 578.P 470  
57.5 AC.  
0143404516000  
PT. 2



Pt. #4  
E. & G. Yanger  
45 A.

Z-24  
55.992 AC.  
(25.115)

Pt. 2  
Pt. 1  
22 1/2 A  
10 A  
8.536

PT. I  
64.398 AC.  
L.G. MELLOTT TRUST.  
2-5-02  
ORV. 1018, P. 722

BLUE WING MANAGEMENT CO.  
80.0 AC.

1.0 AC.

26.5 AC.

18.0 AC.

22.23 AC.

39.163 AC.

J. & P. Wisenbarger II  
14.765 AC

20.0 AC.

60.0 AC

556.99  
R & K JENNINGS  
9-9-96  
ORV 457.P 318  
3.467 AC.  
0143402318001  
412.33

3.137 AC.  
3.50 AC.  
493.28  
J. DANIEL  
493.28

D GOLDMAN  
6-11-98  
ORV 605.P 491  
PP# 01313402402003  
5.003 AC  
5.003 AC

WISENBARGER II  
5.0 AC.  
J. & P. Wisenbarger  
5.0 AC.  
5.0 AC.

WAGNER RD.

T.H. 394

JEFFERSON TWP.  
SEC. 24

Twp. 19-R. 18

7-8-02