

LOUDENVILLE LEXINGTON

W. & J. Martin J. & R. Garton

S. R. 97

Pt. 1
Centra District of Christian
Missionary Alliance A
871

105 185 0.93 0.39
Pt. 1
J. & M.
2.67A
275

Pt. 1 L.K. McPhem
1.85A
Pt. 1 J. & M.
2.67A
275

Pt. 1
M. R. Jossen et al.
66.0A

Pt. 1
C. & L. Oyster
20A

Pt. 3
C. Oyster
151.74

Janes
3.0A
567.76

Pt. 2
W. & D.
Lewis
1.68A

Pt. 1
R. V. Wade
36.3A

GATTON ROCKS
Pt. 2
R. & B. McConkie
5.898A
T. & V. Baer
6.566A

G. W. Deatsman
131+

Pt. 4
R. & B. McConkie
96A

Pt. 8
1.751A
5.945A

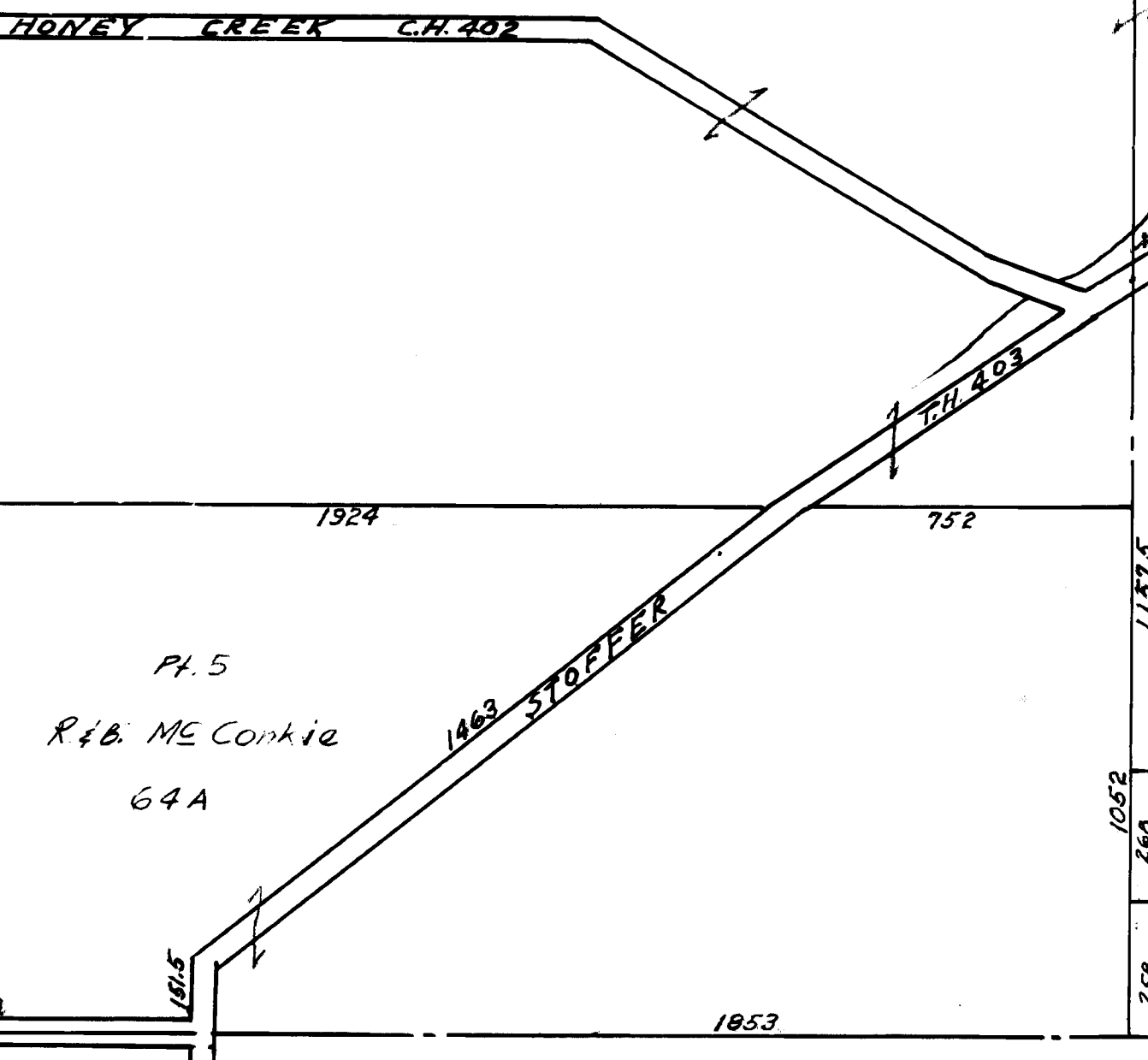
Pt. 11
L. & G. Luddy
6.7A

HONEY CREEK CH. 402

Pt. 6
4A

D. & M. Geary
4.7A

V. & S. Wade
1.85A



Pt. 6
D. & P. Strader
2.5A

F. & J. Spayde
2A
300

D. & M. Geary
4.7A

V. & S. Wade
1.85A

Pt. 5
R. & B. McConkie
64A

Pt
R. & Z. Spayde
10.142

V. & S. Wade
15.67A

Pt 14
V. & S. Wade
39A

844
G. & B. Smith
5.23A

356
D. C. Murphrey
2.22A

Dale C. Murphrey
37.5A

5.12 A
F. & E. Gerber
864

333
T. & D. Coxy Sr.
2.1A

Twp. 19-Sec. 18

JEFFERSON TWP. SEC. 14