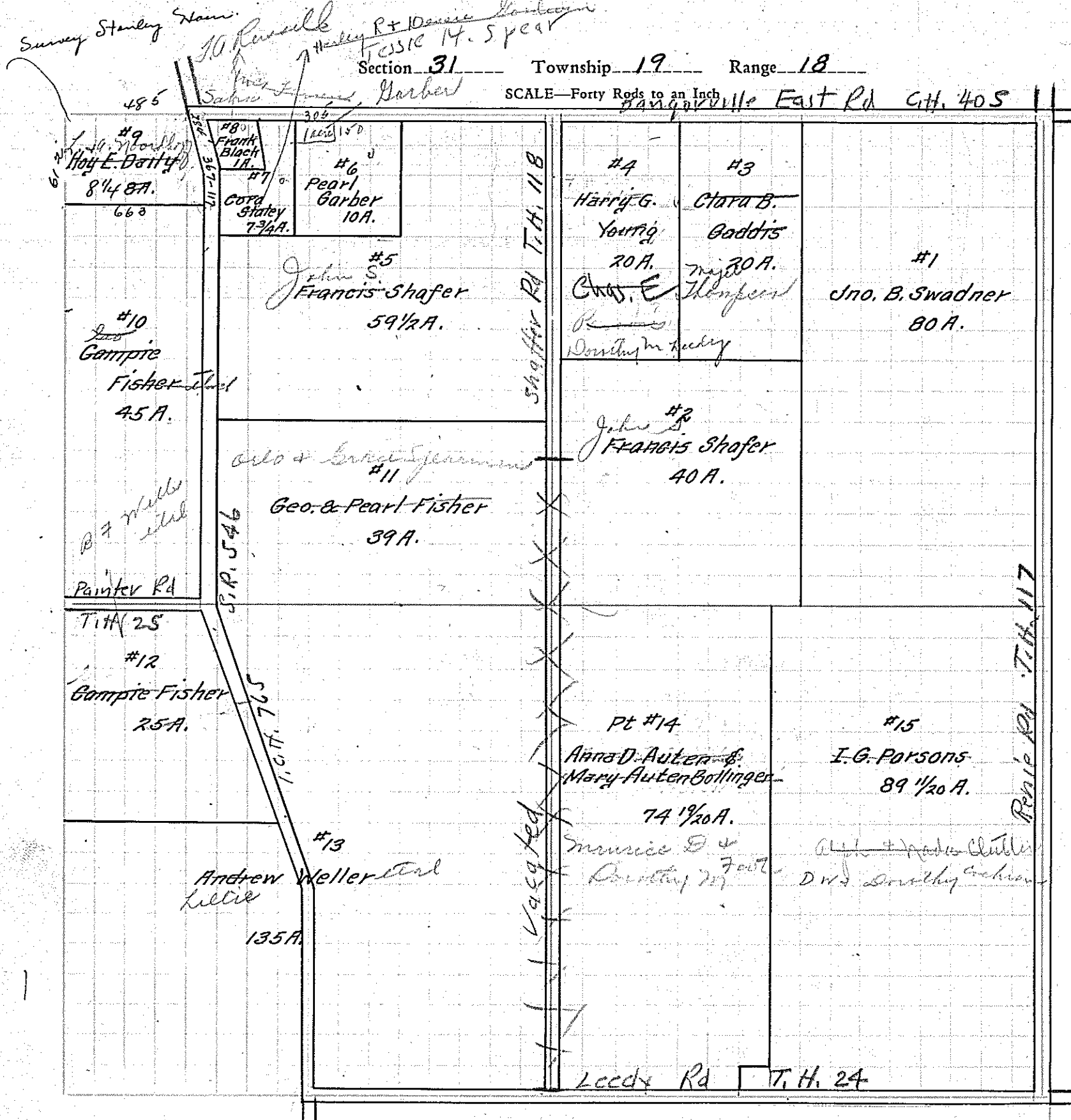
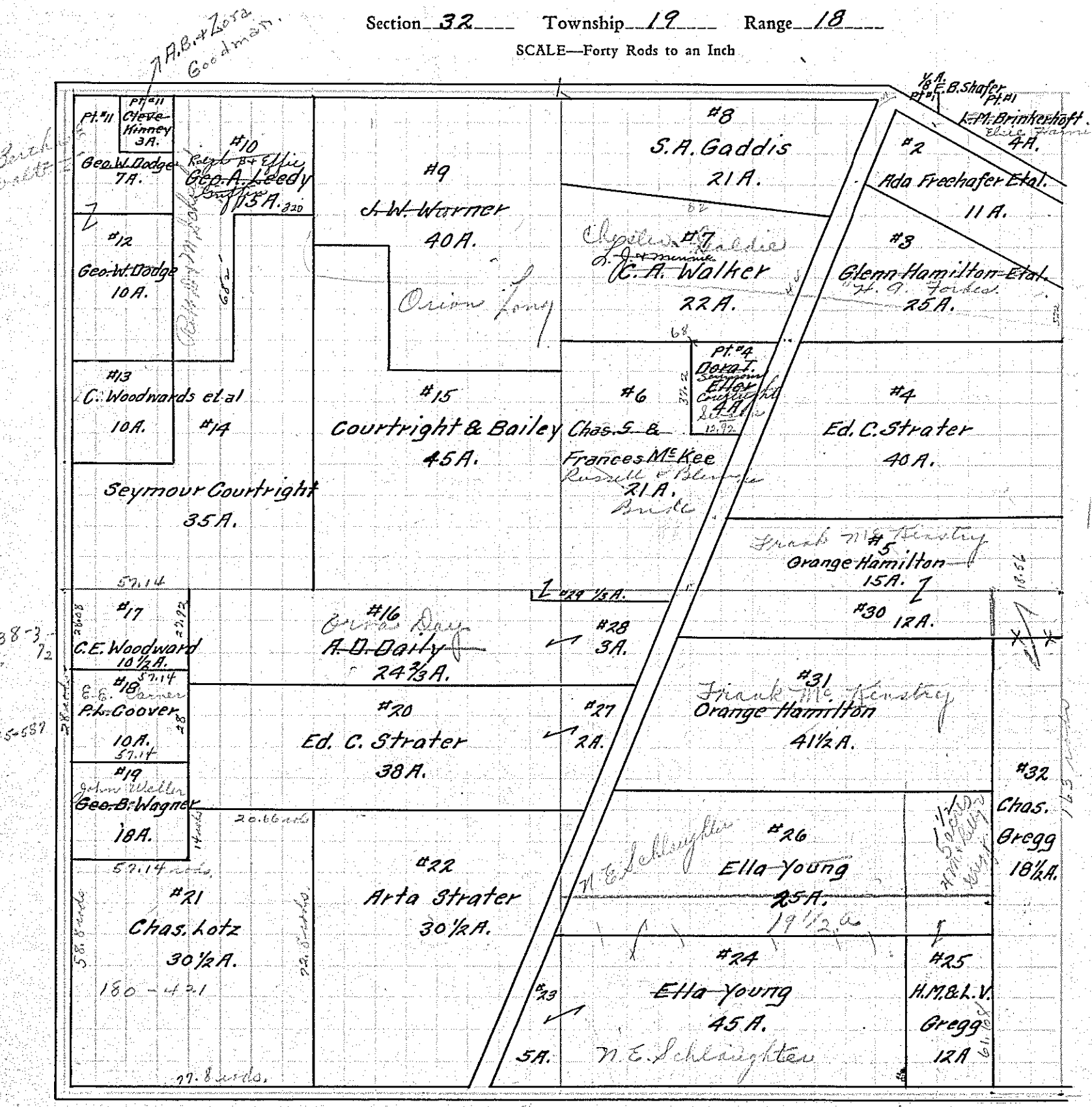


Assessment of Real



- IN WHOSE NAME PROPERTY ASSESSED
- ✓ Swadner John B.
 - ✓ Shafer Francis
 - ✓ Gaddis Clara B.
 - ✓ Young Harry G.
 - ✓ Shafer Francis
 - ✓ Barber Pearl
 - ✓ Staley Cora
 - ✓ Black Frank
 - ✓ Daily Hoy C.
 - ✓ Fisher Gampie
 - ✓ Fisher George & Pearl
 - ✓ Fisher Gampie
 - ✓ Keller Andrew
 - ✓ Auten Anna D. & Bollinger Mary
 - ✓ Parsons I. G.



- ✓ Hamilton, Elsie
- ✓ Brinkerhoff Leta M.
- ✓ Shafer Elworth B.
- ✓ Frechafer Ada et al
- ✓ Hamilton Glenn et al
- ✓ Eller Rosa F. Bertha Swank
- ✓ Strater Ed. C.
- ✓ Hamilton Orange
- ✓ McKee Charles S. Frances et al
- ✓ Halber C. A. L. & Minnie
- ✓ Gaddis S. A.
- ✓ Warner J. W. Long, Orion
- ✓ Ludy George A.
- ✓ Kinney Cleveland
- ✓ Dodge George H. & Maggie
- ✓ Dodge George H.
- ✓ Woodward Clarence et al
- ✓ Courtright Seymour
- ✓ Courtright & Bailey
- ✓ Daily A. D. Day et al
- ✓ Woodward Clarence C.
- ✓ Coover Perry Varnes Elmer Edna
- ✓ Wagner S. B. Weller John