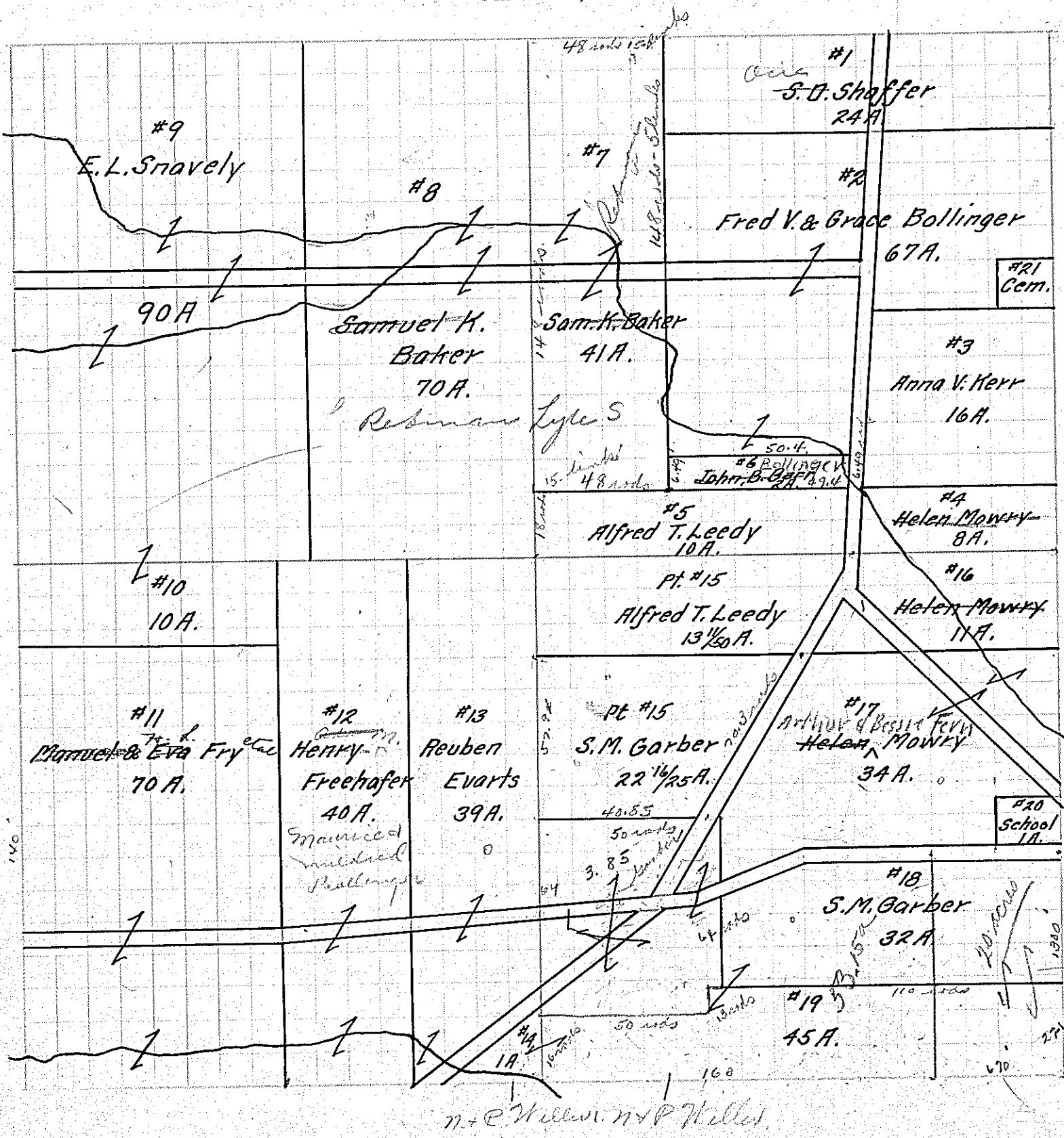


IN WHOSE NAME PROPERTY ASSESSED
✓ Charles Hiram
✓ Durbin Omar
✓ Kochheiser Louis P.
✓ McCullough J.D. & Frances
✓ Swank W.S.
✓ Shaffer Stanton D. Cecil
✓ Bollinger Fred V. & Grace
✓ Kerr Anna V.
✓ Leedy Alfred T.
✓ August Anna C.
✓ Russell James S. & Sylvia
✓ Shaffer Stanton D. Cecil
✓ Bollinger Fred V. & Grace
✓ Kerr Anna V.
✓ Mowery Helen Arthur L. & Bessie Fern
✓ Leedy Alfred T.
✓ Baker John B.
✓ Baker Samuel K.
✓ Baker Samuel K.
✓ Snavelly E. L.
✓ Snavelly E. L.
✓ Fry Manuel & Eva A.
✓ Frechafer Harry Bollinger
✓ Everts Reuben
✓ Garber S. M.
✓ Garber Samuel M.
✓ Leedy A. J.
✓ Mowery Helen Arthur L. & Bessie Fern
✓ Mowery Helen A.
✓ Garber S. M.
✓ Garber S. M.
✓ Snavelly M. T.



✓ Shaffer Stanton D. Cecil
✓ Bollinger Fred V. & Grace
✓ Kerr Anna V.
✓ Mowery Helen Arthur L. & Bessie Fern
✓ Leedy Alfred T.
✓ Baker John B.
✓ Baker Samuel K.
✓ Baker Samuel K.
✓ Snavelly E. L.
✓ Snavelly E. L.
✓ Fry Manuel & Eva A.
✓ Frechafer Harry Bollinger
✓ Everts Reuben
✓ Garber S. M.
✓ Garber Samuel M.
✓ Leedy A. J.
✓ Mowery Helen Arthur L. & Bessie Fern
✓ Mowery Helen A.
✓ Garber S. M.
✓ Garber S. M.
✓ Snavelly M. T.