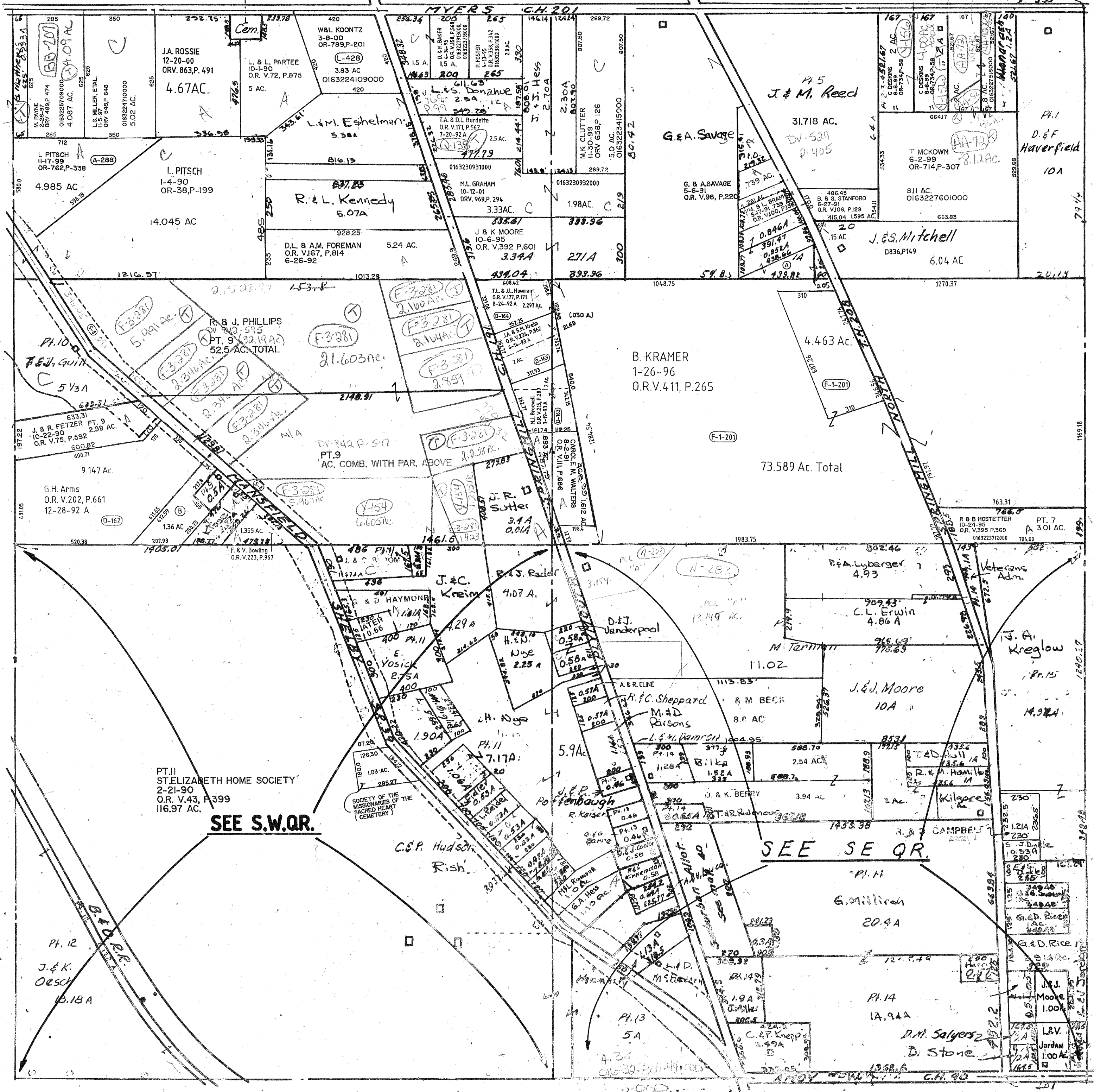


6-29-1833  
DV. 10, P. 143

(B) R & N SHADEL  
3-20-02  
ORV1034, P. 14

(A) E OR E RUSSELL, TRUST.  
L-4-99  
ORV 669 P. 577  
0163230914000, 07 AC.  
0163226804000, 1.0 AC.  
0163226802000, .952 AC.  
0163226801000, .846 AC.

AA-500  
L-10-90



(N-384)

(A-288)

(D-162)

(D-162)

(D-162)

(D-162)

(D-162)

(D-162)

(D-162)

(D-162)

(D-162)

(D-162)

(D-162)

(D-162)

(D-162)

(D-162)

(D-162)

(D-162)

(D-162)

(D-162)

(D-162)

PT. II  
ST. ELIZABETH HOME SOCIETY  
2-21-90  
O.R. V. 43, P. 399  
116.97 AC.

SEE S.W.Q.R.

SEE SE QR.

Twp. 22-R. 19

JACKSON TWP SEC. 26

8-13-00