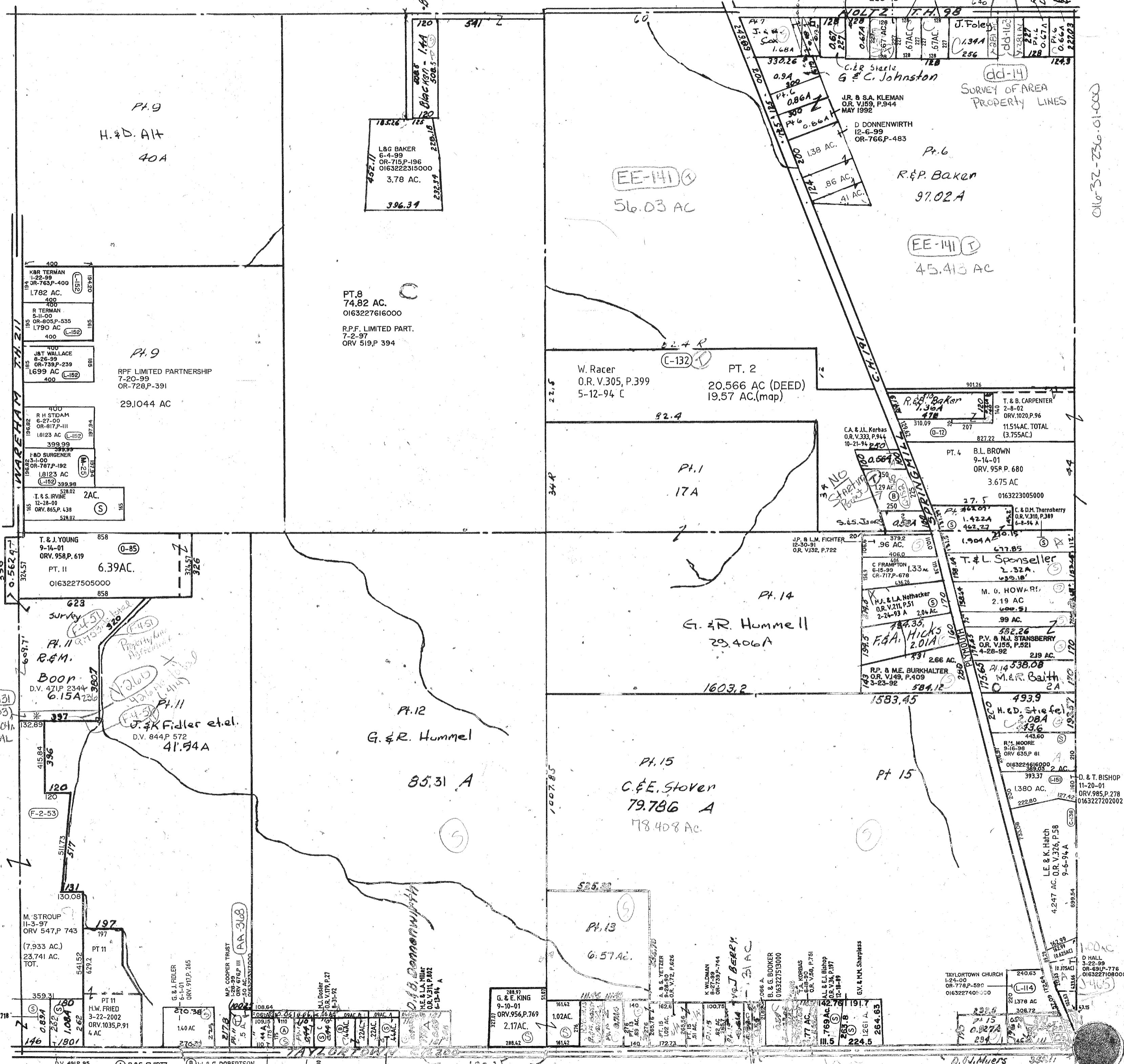


M.L. HICKS
6-5-02
ORV.1066, PG.101
1.29 AC
0163226611000

R.D. GARRETT
R.W. STROUP
6-15-99
ORV. 482 P. 682
0163226890000

S.A. BOOKER
2-28-01
ORV. 880, P. 612

R.E.G. DEANIS
H.P.R.



Pt. 9
H. & D. AIT
40A

L&G BAKER
6-4-99
OR-715 P. 496
0163222315000
3.78 AC.
396.34

EE-141
56.03 AC

Pt. 6
R. & P. BAKER
97.02 A

EE-141
45.413 AC

PT. 8
74.82 AC.
0163227616000
R.P.F. LIMITED PART.
7-2-97
ORV 519, P. 394

W. Racer
O.R. V.305, P.399
5-12-94 C
20.566 AC (DEED)
19.57 AC.(map)

PT. 2
20.566 AC (DEED)
19.57 AC.(map)

Pt. 9
RPF LIMITED PARTNERSHIP
7-20-99
OR-728, P. 391
29.1044 AC

C.A. & J.L. Korbas
O.R. V.333, P.944
10-21-94 P.30
11.514 AC. TOTAL
(3.755 AC.)

PT. 4
B.L. BROWN
9-14-01
ORV. 958 P. 680
3.675 AC
0163223005000

C. & D.M. Thornberry
O.R. V.310, P.389
6-8-94 A
11.514 AC. TOTAL
(3.755 AC.)

C. FRAMPTON
6-15-99
OR-717, P. 678
436.76
1.33 AC

T. & L. Sponseller
2.32 A
677.85

Pt. 14
G. & R. Hummel II
29.406 A

M.A. & L.A. Nofhacker
O.R. V.211, P.51
2-24-93 A
2.04 AC

M. G. HOWARD
2.19 AC
600.51

F.G.A. HICKS
2.01 AC
584.12

P.V. & M.J. STANSBERRY
O.R. V.155, P.521
4-28-92
2.19 AC

R.P. & M.E. BURKHALTER
O.R. V.149, P.409
3-23-92
584.12

M.R. Baith
2.19 AC

Pt. 12
G. & R. Hummel
85.31 A

Pt. 15
C. & E. Stover
79.786 A
78.408 AC.

Pt. 15
1583.45

H. & D. Stiefel
2.08 A
493.9

Pt. 13
G. 57 AC.

B. & G. BOOKER
0163227515000

TAYLORTOWN CHURCH
1-24-00
OR-778 P. 580
0163227405000
240.63
1378 AC
308.72

D. & T. BISHOP
11-20-01
ORV. 985, P. 278
0163227202002

A.M. Landt
O.R. V.301, P.718
4-26-94

M. STROUP
11-3-97
ORV 547, P. 743
(7.933 AC.)
23.741 AC.
TOT.

H.W. FRIED
3-22-2002
ORV. 1035, P. 91
4 AC

G. & J. FIDLER
6-1-01
ORV. 917, P. 265

M.P. COOPER TRUST
ORV. 676 P. 111
0163223310000

M.J. DORRIS
O.R. V.311, P.27
8-31-94

G. & E. KING
9-10-01
ORV. 956, P. 769
2.17 AC.

M.E. & L.A. MILLER
O.R. V.311, P.802
8-13-94 A

A. S. YETZER
8-26-90, P. 626
OR. V.12, P. 626

K. WILDMAN
8-27-99
ORV. 739, P. 744

B. & G. BOOKER
0163227515000

M. & J. BERRY
1.21 AC

M. & J. BISHOP
O.R. V.316, P.197
12-18-99

G.V. & M.H. SHARPLESS

11.7
191.7
1261 A.
264.63

11.7
191.7
1261 A.
264.63

D.V. 491 P. 95
M. STROUP

D. & S. GWIRTZ
2-19-02
ORV. 1022, P. 415
4.4 AC. & 0.6 AC.

W. & G. ROBERTSON
8-30-02
ORV. 1100, P. 282

E. & L. SCHUMMER
6-7-98
ORV. 427, P. 593
44 AC.
0163227210000
0.6 AC.
0163227209000

R. & S. BOND
7-2-01
ORV. 116, P. 87
01632279000/09000

S.M. HAYS
11-7-00
ORV. 852, P. 697

Twp. 22-R. 19

JACKSON TWP SEC. 15
9-3-00

01632272360-01-000