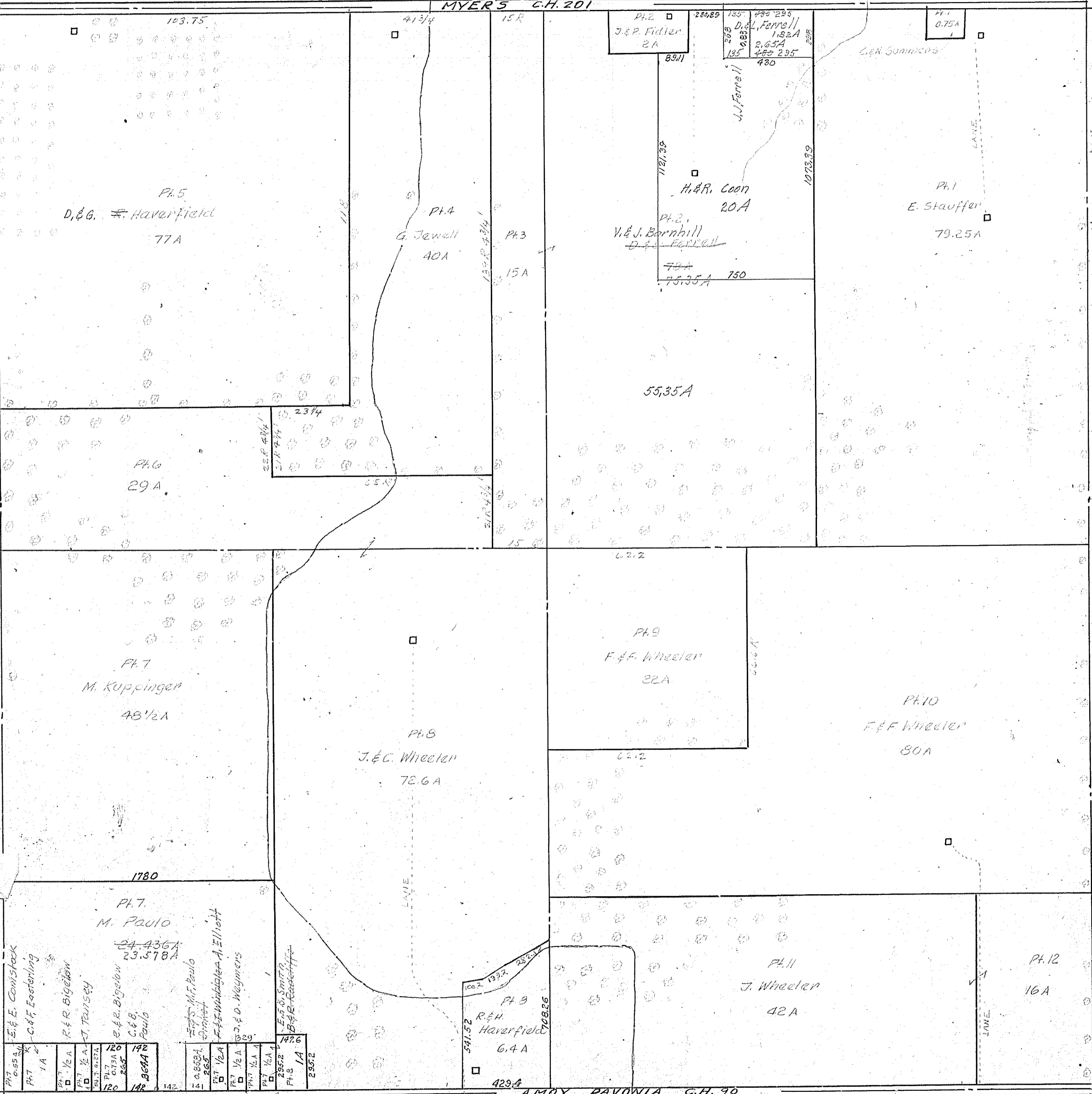


MYERS C.H. 201



|        |        |                    |
|--------|--------|--------------------|
| Pt. 1  | 0.55 A | E. & E. Conistock  |
| Pt. 2  | 1 A    | C. & F. Easterling |
| Pt. 3  | 1/2 A  | R. & R. Bigelow    |
| Pt. 4  | 1/2 A  | T. Tainsey         |
| Pt. 5  | 120    | R. & R. Bigelow    |
| Pt. 6  | 142    | C. & B. Paulo      |
| Pt. 7  | 142    | M. Paulo           |
| Pt. 8  | 142    | M. Paulo           |
| Pt. 9  | 142    | M. Paulo           |
| Pt. 10 | 142    | M. Paulo           |
| Pt. 11 | 142    | M. Paulo           |
| Pt. 12 | 142    | M. Paulo           |