

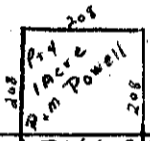


#3
H.G. Luser et al
90A.

#2
MATT BLY
80A.

#1
W.J. BLY
78A.

#4
R+B Wolf
~~MATT BLY et al~~
70A.
69A

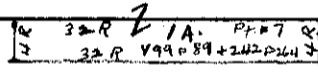


348'3"

ASHLAND SHELBY I.C.H. 148 S.P. 96

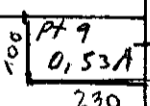
#5
R+B Wolf
37
38A.

#6
3A.



#7
M Horn et al.
59A

#8
H. Clark
80A.



D+E. Leister

#9
S.W. Zackman
60A.

#9
Ming Baker
79.47A

Twp. 22 - R. 18 Union Sch. Dist

FRANKLIN TWP. SEC. 5
AP-~~678-54-2~~ Pocket 7 - Folder 2