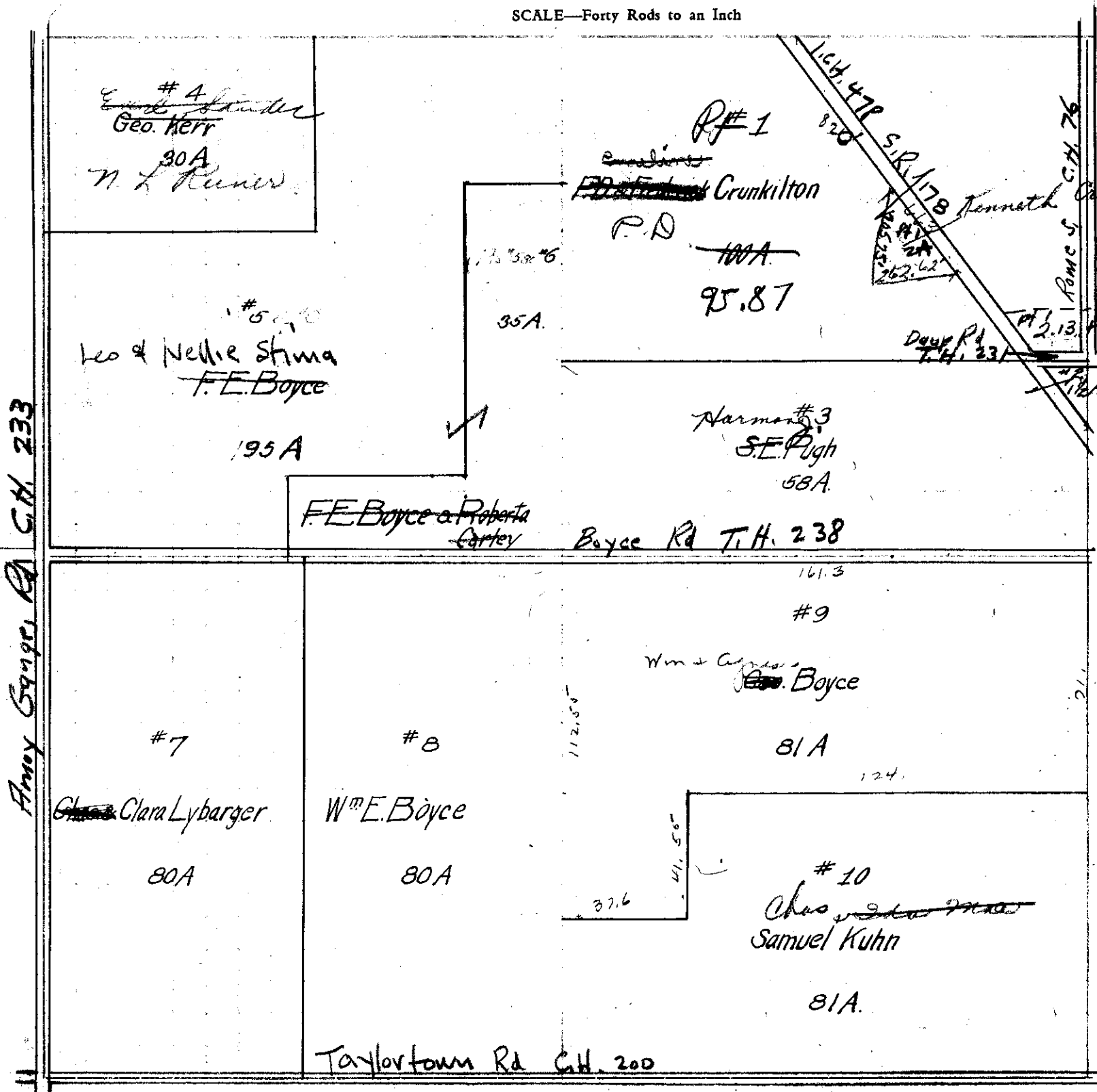
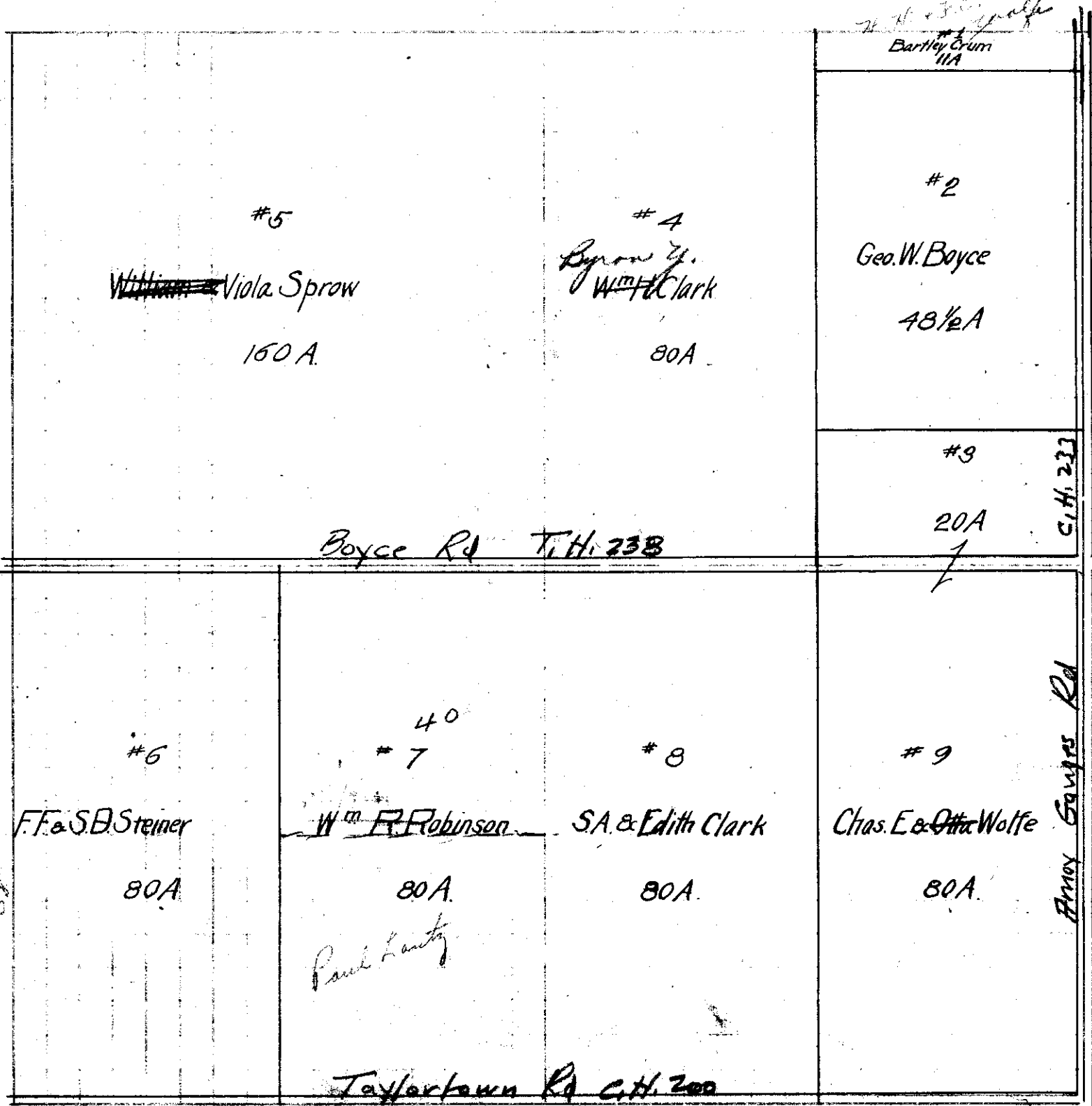


IN WHOSE NAME PROPERTY ASSESSED



- ✓ Crunkilton P.D. 100A
- ✓ Crunkilton P.D. 95.87
- ✓ Harmon #3 S.E. Pugh 58A
- ✓ F.E. Boyce & Roberta Carter Boyce Rd T.H. 238
- ✓ #9 Wm + Agnes Boyce 81A
- ✓ #10 Chas. & Ida Wolfe Samuel Kuhn 81A
- ✓ Crunkilton P.D. 100A
- ✓ Pugh Land E. Harmon, J.
- ✓ Pugh Land E. Harmon, J.
- ✓ Harmon #3 S.E. Pugh 58A
- ✓ F.E. Boyce & Roberta Carter Boyce Rd T.H. 238
- ✓ Clara Lybarger 80A
- ✓ Wm. E. Boyce 80A
- ✓ Chas. & Ida Wolfe Samuel Kuhn 81A
- ✓ Crunkilton P.D. 100A
- ✓ Pugh Land E. Harmon, J.
- ✓ Pugh Land E. Harmon, J.
- ✓ Harmon #3 S.E. Pugh 58A
- ✓ F.E. Boyce & Roberta Carter Boyce Rd T.H. 238
- ✓ Clara Lybarger 80A
- ✓ Wm. E. Boyce 80A
- ✓ Chas. & Ida Wolfe Samuel Kuhn 81A
- ✓ Crunkilton P.D. 100A
- ✓ Pugh Land E. Harmon, J.
- ✓ Pugh Land E. Harmon, J.
- ✓ Harmon #3 S.E. Pugh 58A
- ✓ F.E. Boyce & Roberta Carter Boyce Rd T.H. 238
- ✓ Clara Lybarger 80A
- ✓ Wm. E. Boyce 80A
- ✓ Chas. & Ida Wolfe Samuel Kuhn 81A



- ✓ Crunkilton P.D. 100A
- ✓ Pugh Land E. Harmon, J.
- ✓ Pugh Land E. Harmon, J.
- ✓ Harmon #3 S.E. Pugh 58A
- ✓ F.E. Boyce & Roberta Carter Boyce Rd T.H. 238
- ✓ Clara Lybarger 80A
- ✓ Wm. E. Boyce 80A
- ✓ Chas. & Ida Wolfe Samuel Kuhn 81A
- ✓ Crunkilton P.D. 100A
- ✓ Pugh Land E. Harmon, J.
- ✓ Pugh Land E. Harmon, J.
- ✓ Harmon #3 S.E. Pugh 58A
- ✓ F.E. Boyce & Roberta Carter Boyce Rd T.H. 238
- ✓ Clara Lybarger 80A
- ✓ Wm. E. Boyce 80A
- ✓ Chas. & Ida Wolfe Samuel Kuhn 81A
- ✓ Crunkilton P.D. 100A
- ✓ Pugh Land E. Harmon, J.
- ✓ Pugh Land E. Harmon, J.
- ✓ Harmon #3 S.E. Pugh 58A
- ✓ F.E. Boyce & Roberta Carter Boyce Rd T.H. 238
- ✓ Clara Lybarger 80A
- ✓ Wm. E. Boyce 80A
- ✓ Chas. & Ida Wolfe Samuel Kuhn 81A