

THIS PARCEL WAS NEVER
 CREATED BY SURVEY OR
 BY DEED, NOT SURE
 WHAT HAPPENED, REMOVED
 FROM CAMP 6-27-05

0074907016000
 D.C. BALDRIDGE, ETAL
 6-15-95
 ORV 370 P 404

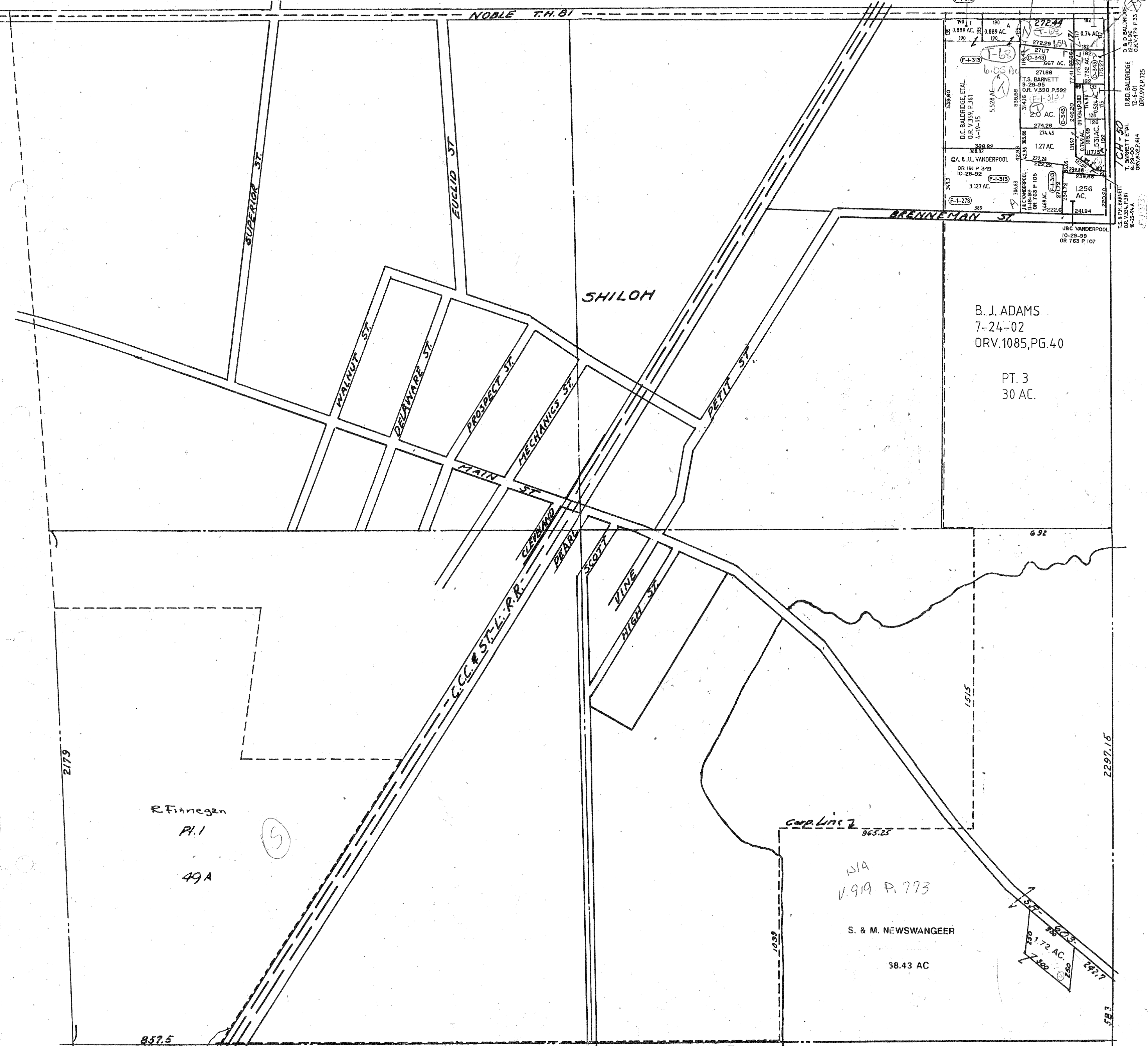
D.C. BALDRIDGE
 12-31-98
 ORV 479 F33

D.D. BALDRIDGE
 12-6-01
 ORV 92 P 725

T.S. & P.H. BARNETT
 ORV 138 P 137
 10-25-14

T.S. BARNETT ETAL
 ORV 632 P 614

J.C. VANDERPOOL
 10-29-99
 OR 763 P 107



190 C 0.889 AC. 190	190 A 0.889 AC. 190	272.44 F-1-313	182 0.74 AC
539.60 D.C. BALDRIDGE, ETAL O.R. V.357, P.361 4-19-95	535.56 T.S. BARNETT O.R. V.390 P.592 9-28-95	667 AC. F-1-313	182 0.74 AC
388.82 CA. & J.L. VANDERPOOL OR 191 P 349 10-28-92	42.96 T.S. BARNETT O.R. V.357, P.361 4-19-95	274.28 F-1-313	182 0.74 AC
349.9 F-1-278	304.83 J.C. VANDERPOOL OR 763 P 105 10-29-99	272.28 F-1-313	182 0.74 AC
	389 J.C. VANDERPOOL OR 763 P 107 10-29-99	272.28 F-1-313	182 0.74 AC

B. J. ADAMS
 7-24-02
 ORV.1085, PG.40

PT. 3
 30 AC.

R. Finnegan
 Pl. 1
 49A

NIA
 V. 919 P. 773

S. & M. NEWSWANGEEER
 58.43 AC

18' STRIP ALONG R.R.
 L. & N. NOLT
 2-5-90
 O.R. V.42, P.631
 (541 AC.)

Twp. 23- R. 19

CASS TWP. SEC. II 7-25-02